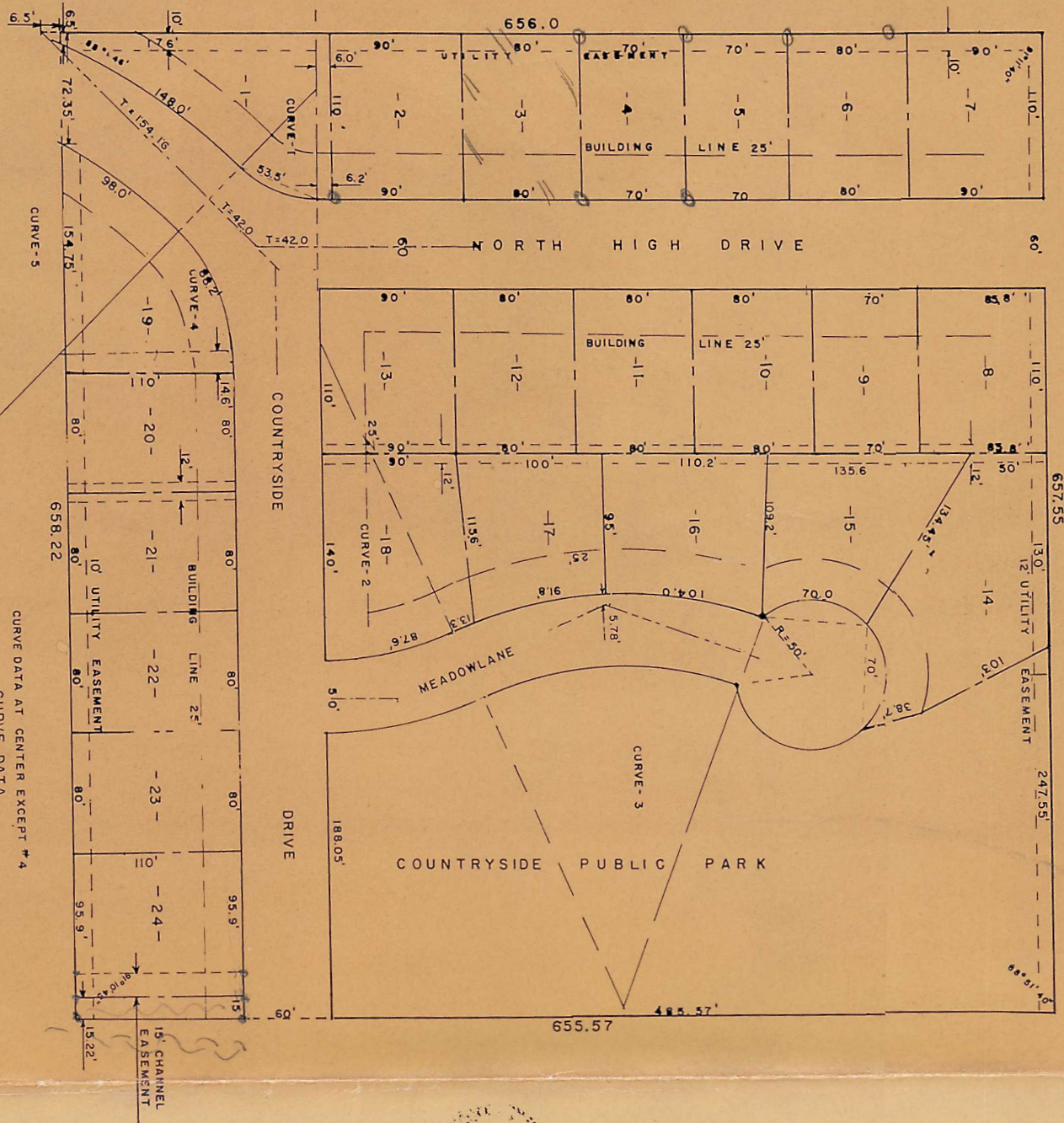


THE SW 1/4 OF THE SW 1/4 OF THE NE 1/4 OF SECTION 21, T19S, R3W,
MCPHERSON COUNTY, KANSAS

COUNTRYSIDE ADDITION

LOT CURVE MEASUREMENTS
ARE SHOWN AS CHORD DISTANCES

CURVE DATA AT CENTER EXCEPT #4	
CURVE DATA	
1	Δ 45°36' T 42.0' R 100.0'
2	Δ 22°42' T 50.0' R 238.30'
3	Δ 43°34' T 100.0' R 250.20'
4	Δ 43°17' T 47.41' R 119.5'
5	Δ 45°36' T 154.16' R 366.9'



SURVEYORS CERTIFICATE AND DESCRIPTION

I, FRANKLIN, A LICENSED PROFESSIONAL ENGINEER OF THE STATE OF KANSAS, CERTIFY THAT I HAVE SURVEYED, OR CAUSED A SURVEY TO BE MADE UNDER MY SUPERVISION, OF THE ABOVE PLAT AND DESCRIBED AS FOLLOWS: BEGINNING AT THE CENTER OF SECTION 21-T19S-R3W, MCPHERSON COUNTY, KANSAS, THENCE NORTH 656.0', THENCE EAST 657.55', THENCE SOUTH 655.57', THENCE WEST 658.22' TO THE PLACE OF BEGINNING, SAID TRACT CONTAINS 10 ACRES MORE OR LESS.

SIGNED THIS 8 DAY OF August 1968

DEDICATION

STATE OF KANSAS)) SS
COUNTY OF MCPHERSON)

KNOW ALL MEN BY THESE PRESENTS, that Robert L. Rankin and Rita K. Rankin, Owners and proprietors of the lands above described in the certificate of surveyor, have caused the said lands to be surveyed into lots and under the name of COUNTRYSIDE ADDITION to the city of Mopherston, Kansas, and have caused the same to be subdivided into lots, streets, Avenues and public ways, as shown on the accompanying plat, and further that all streets, alleys and public ways are for the use of the public. The said COUNTRYSIDE ADDITION and the land contained therein, is held and shall be conveyed subject to the restrictions and reservations and covenants on file in the office of the register of deeds of Mopherston County Kansas.

Dated at Mopherston, Kansas August 12 1968

Signed

Robert L. Rankin
Rita K. Rankin

STATE OF KANSAS)) SS
MCPHERSON COUNTY)

Be it remembered that on this day 12th of August 1968

before me the undersigned, a notary public, duly commissioned in and for the county and state aforesaid came Robert L. Rankin and Rita K. Rankin Personally known to me to be the same persons who executed the foregoing instrument of writing in of this dedication, and be duly acknowledged the execution for himself.

IN WITNESS WHEREOF, I have hereunto set my hand and official seal on the day and year last above written,

Notary Public

My commission expires Sept. 5 1971

STATE OF KANSAS)) SS
COUNTY OF MCPHERSON)

I, Linn Peterson the duly appointed, and now acting city clerk of the City of Mopherston, Kansas, do hereby certify that the Planning commission of the City of Mopherston, Kansas, recommended approval of the accompanying plat to the board of commissioners of the City of Mopherston, Kansas, and that said Board adopted said recommendation and approved said plat, and incorporated said approval in the minutes on the 26th day of August 1968

IN WITNESS WHEREOF, I have set my name and affixed the seal of said City this 26th day of August 1968

(seal)

STATE OF KANSAS)) SS
COUNTY OF MCPHERSON)

I, Melbert Johnson, the duly elected County clerk of the County of Mopherston, Kansas, do hereby certify that the zoning board of Mopherston County, Kansas, recommended approval of the accompanying plat to the Board of County Commissioners of Mopherston County, Kansas, and that said board approved such said recommendation, approved said plat, and incorporated said approval in their minutes on the 16th day of August 1968

IN WITNESS WHEREOF, I have set my hand and affixed my seal of the county this 16th day of August 1968

County Clerk
Mopherston, County, Kansas.

(seal)

STATE OF KANSAS)) SS
COUNTY OF MCPHERSON)

BE IT KNOWN, That the attached plat was submitted to the city planning commission of the City of Mopherston, Kansas, and was by it approved on this 12 day of August 1968

Chairman of Planning Commission City
Mopherston Kansas.

STATE OF KANSAS)) SS
COUNTY OF MCPHERSON)

BE IT KNOWN, That the attached plat was submitted to the Zoning board of Mopherston County, Kansas, and was by it approved on the 12th day of August 1968

Chairman of Planning Commission
County of Mopherston, County, Kansas.

STATE OF KANSAS)) SS
COUNTY OF MCPHERSON)

BE IT KNOWN, That the attached was submitted to me and that the same is hereby approved this 12 day of August 1968

City Engineer
City of Mopherston, Kansas

STATE OF KANSAS)) SS
COUNTY OF MCPHERSON)

BE IT KNOWN, That the attached plat was submitted to me and that same is hereby approved this 8 day of August 1968

County Engineer of Mopherston,
County, Kansas.

STATE OF KANSAS)) SS
COUNTY OF MCPHERSON)

BE IT KNOWN, That the attached plat was submitted to me and that the same is approved this 12th day of August 1968

City Attorney of the City of Mopherston,
Kansas.

STATE OF KANSAS)) SS
COUNTY OF MCPHERSON)

BE IT KNOWN, That the attached plat was submitted to me and that the same is hereby approved this 12th day of August 1968

County Attorney Mopherston, Kansas