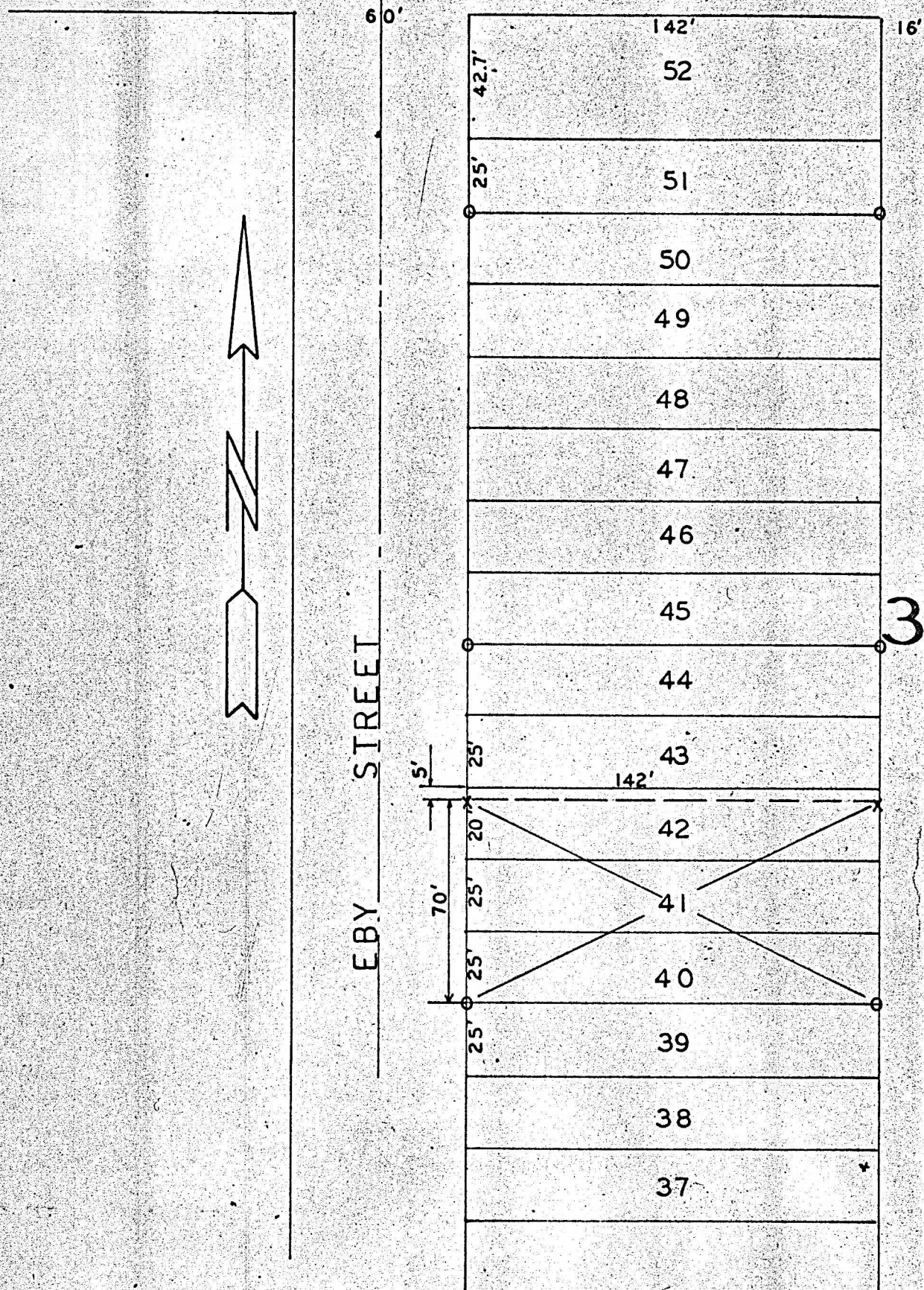


C FIRST STREET



O— PINS FOUND AND VERIFIED X— PINS SET ON SURVEY

STATE OF KANSAS)
CITY OF MCPHERSON) SS

I, CHARLES E. STACY, CITY ENGINEER OF MCPHERSON, DO HEREBY CERTIFY THAT I DID CAUSE TO BE DONE ON THE 23RD. DAY OF OCTOBER 1965, A SURVEY OF LOTS 40, 41, AND THE SOUTH 20 FEET OF LOT 42, BLOCK 3, COLLEGE PLACE ADDITION TO MCPHERSON, MCPHERSON COUNTY, KANSAS; AND THAT THE ABOVE ACCOMPANYING PLAT IS A TRUE EXHIBIT OF SAID SURVEY.

NOVEMBER 3, 1965

MICROFILM
SURVEY ORDERED BY ADOLPH OLLEK

Charles E. Stacy
CHARLES E. STACY P.E.

