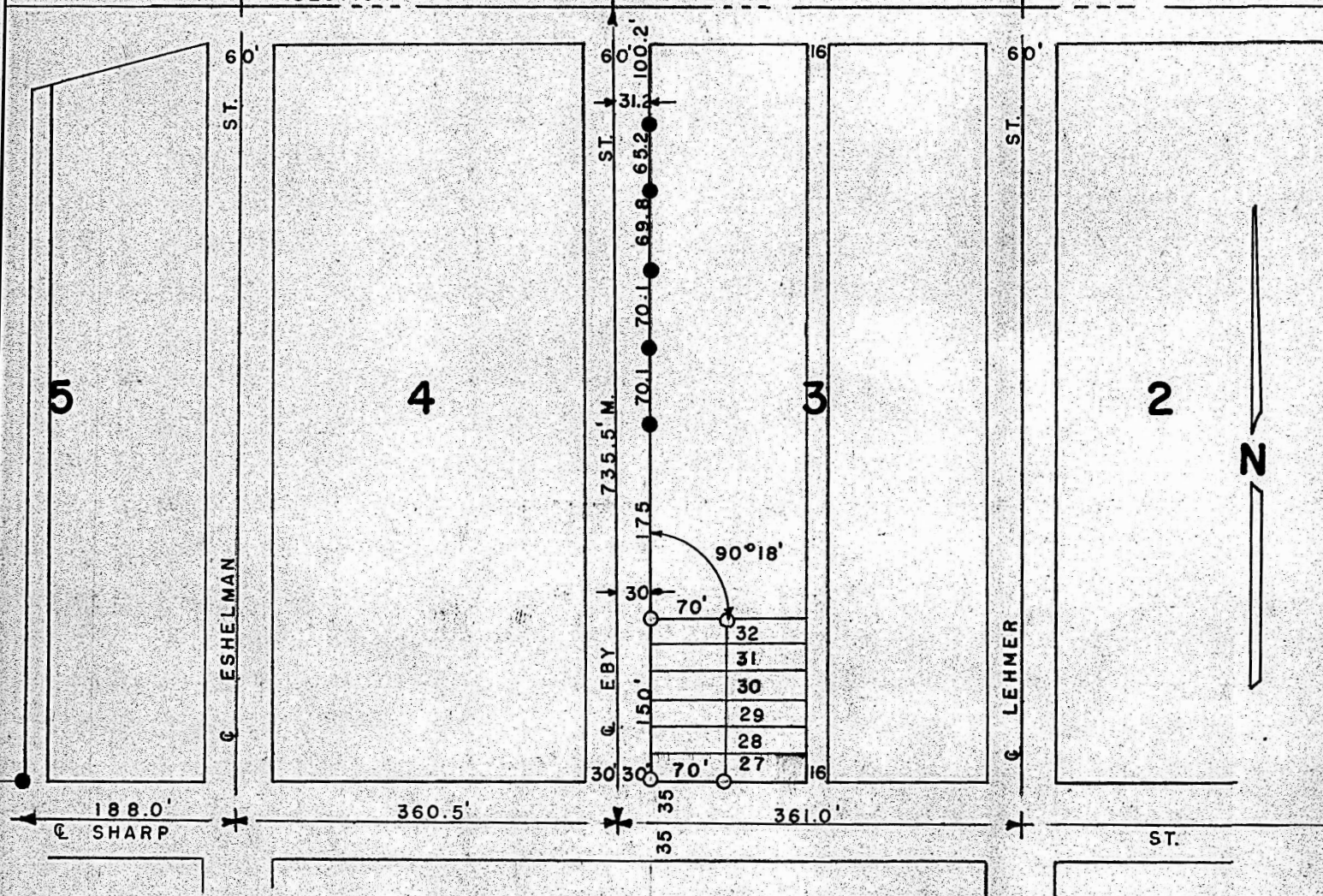


A SURVEY OF THE WEST 70' LOTS 27 THRU 32
BLOCK 3 OF COLLEGE PLACE ADDITION
McPHERSON, KANSAS

SECTION LINE



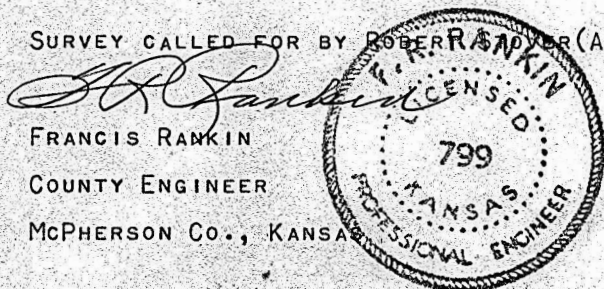
- PINS FOUND THIS SURVEY
- PINS SET THIS SURVEY (SET 1/2" REBAR)

STATE OF KANSAS) ss
COUNTY OF MCPHERSON)

I, FRANCIS RANKIN, COUNTY ENGINEER OF MCPHERSON COUNTY, DO HEREBY CERTIFY THAT UNDER MY SUPERVISION A SURVEY WAS MADE TO DETERMINE THE WEST 70 FEET OF LOTS 27 THRU 32, BLOCK 3, COLLEGE PLACE ADD. AND THE ABOVE PLAT IS A TRUE EXHIBIT OF SAID SURVEY AS FAR AS IT IS KNOWN TO ME.

SIGNED THIS 7 DAY OF JUNE 1966.

SURVEY CALLED FOR BY ROBERT RANKIN (ATTY.)



MICROFILM

FIELD NOTES IN CITY BOOK PAGES 55 & 56