

Survey of Lot 1,2,3&4 Block 26  
College Place Addition  
McPherson, Kansas

C Gordon

St.

35'

35'

St.

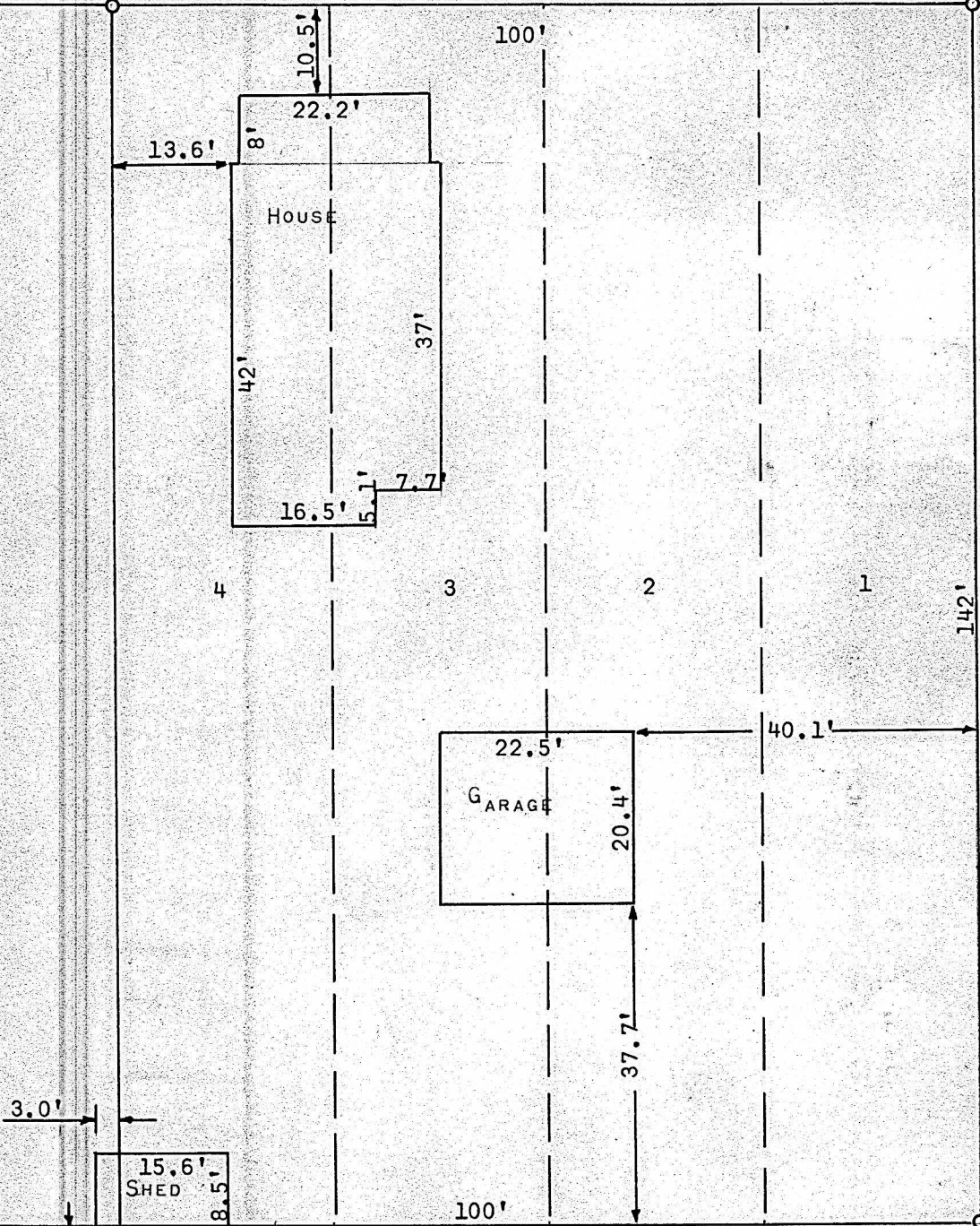
30'

100'

142'

100'

North

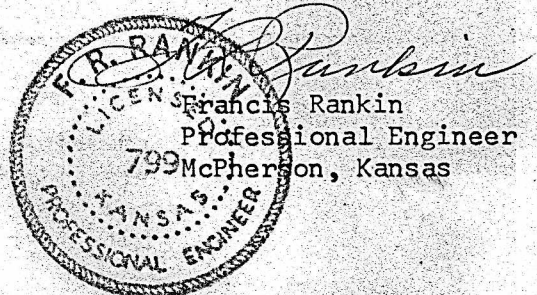


○ Pins set this survey  
State of Kansas )  
County of McPherson ) SS

I, Francis Rankin, Professional Engineer of the State of Kansas do hereby certify that under my supervision a survey was made of Lots 1, 2, 3, & 4 Block 26 College Place Addition to the city of McPherson Kansas, and the above plat is a true exhibit of said survey as far as it is known to me.

Survey called for by Bob Perrin

Signed this 10 day of August, 1967



MICROFILM