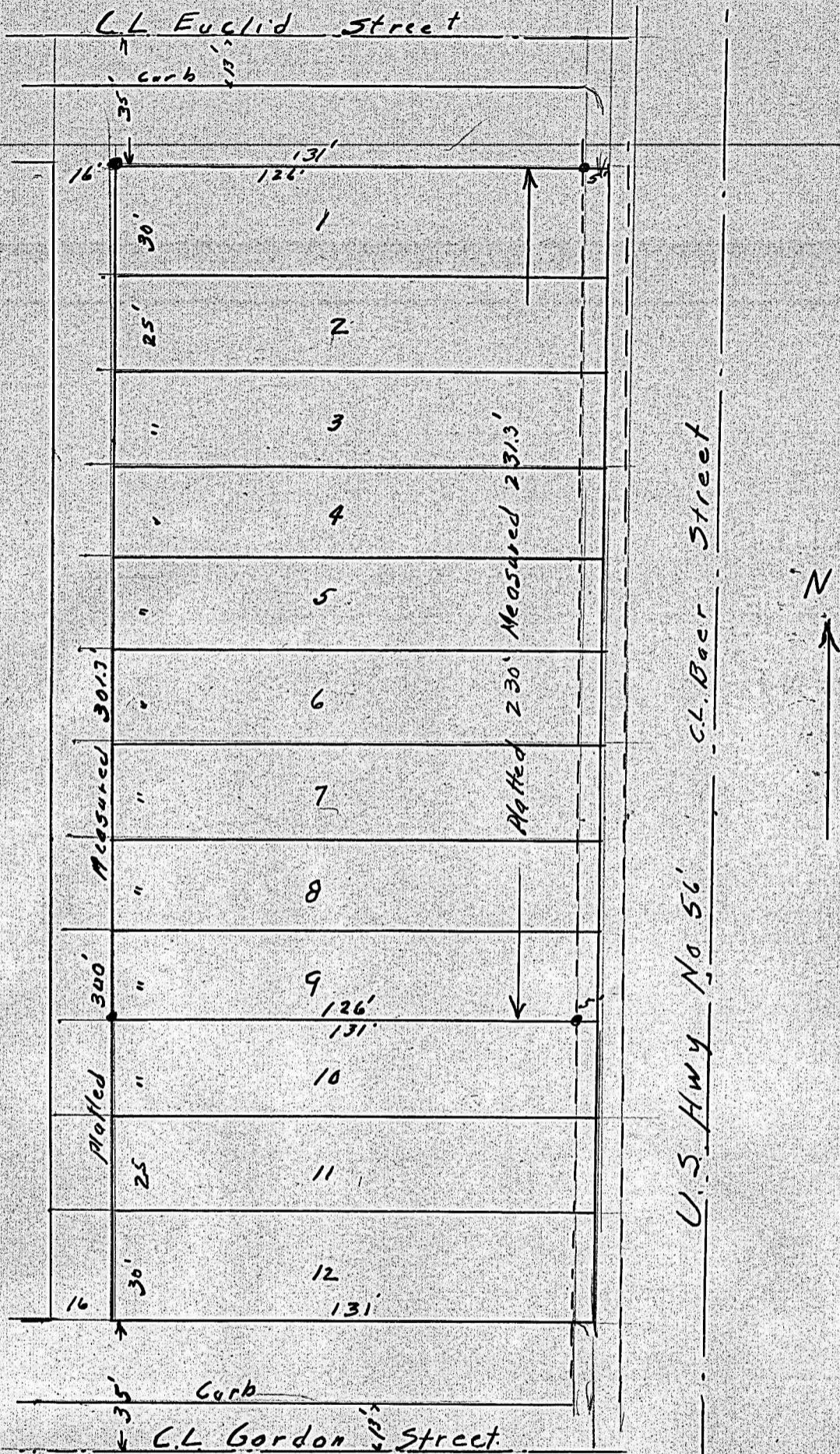
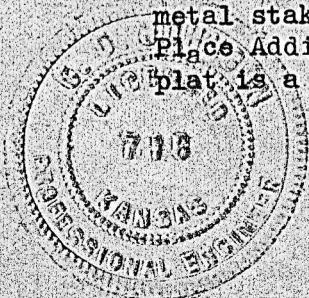


Lots 1 to 9, Inclusive, Block 21, College Place Addition, McPherson, Kansas,



State of Kansas, )  
County of McPherson, ) SS.

I, G.D. Johnson, Licensed Civil Engineer in the State of Kansas, do hereby certify that I did on the 9th. day of May, 1962 survey and placed metal stakes at the corners of Lots 1 to 9 inclusive, Block 21, College Place Addition to the City of McPherson, Kansas and that Accompanying plat is a true exhibit of said survey.



*G.D. Johnson*