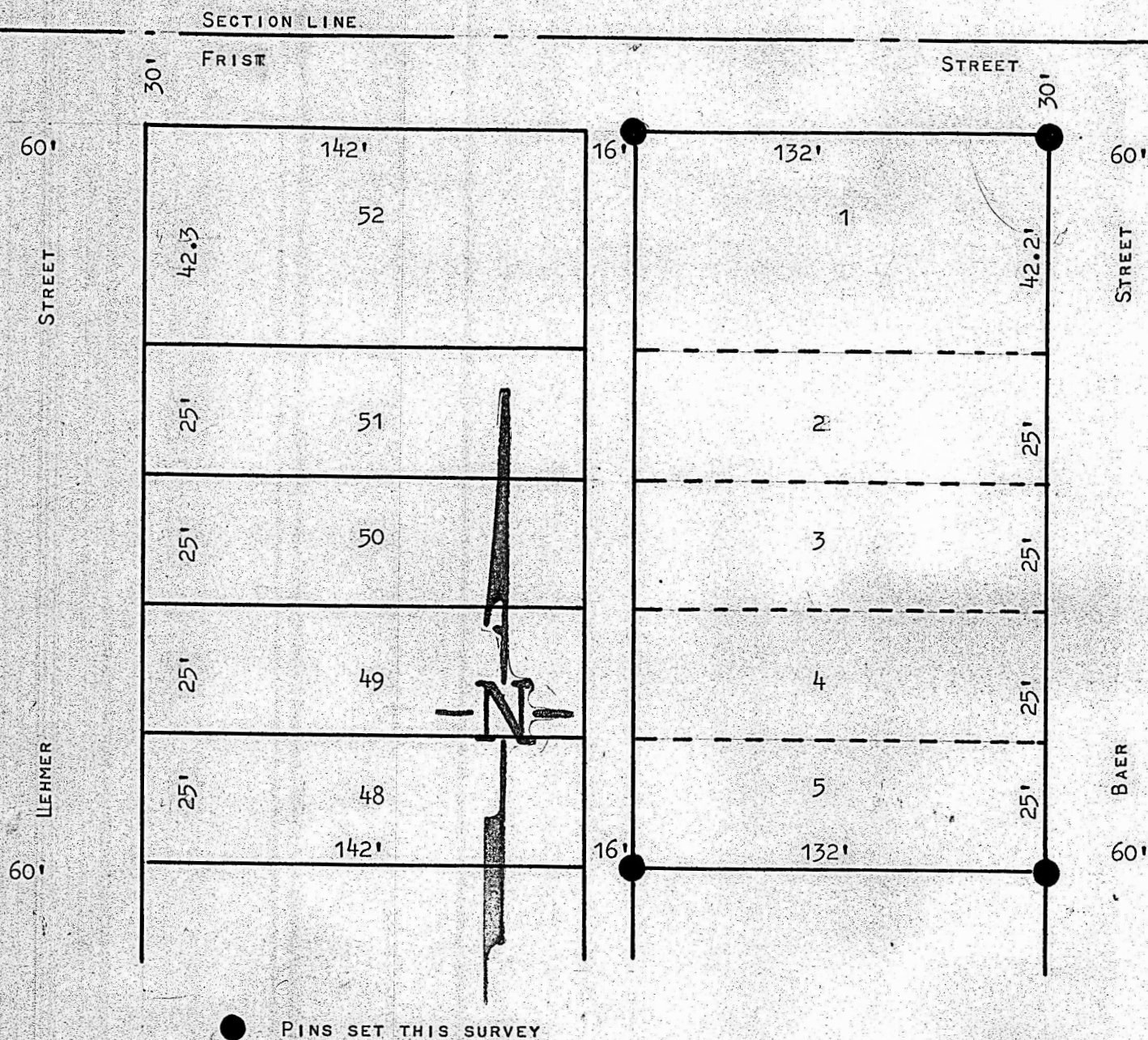


COLLEGE PLACE ADDITION  
LOTS 1 TO 5 INC. BLOCK 2

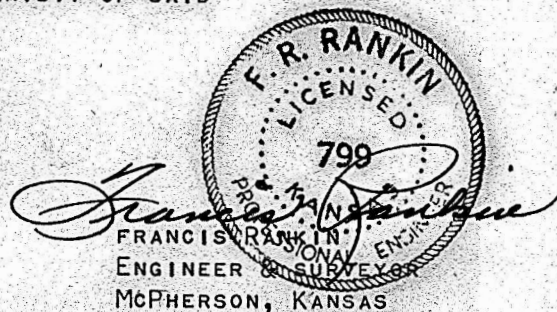


STATE OF KANSAS )  
McPHERSON COUNTY ) SS

I, FRANCIS R. RANKIN PROESSIONAL ENGINEER, OF THE STATE OF KANSAS, DO HEREBY CERTIFY, THAT THE ABOVE SURVEY WAS MADE UNDER MY SUPERVISION, OF LOTS 1 THROUH 5 INC. BLOCK 2 COLLEGE PLACE ADDITION TO THE CITY OF MCPHERSON, KANSAS, AND THAT THE ACCOMPANYING PLAT IS A TRUE EXHIBIT OF SAID SURVEY AS FAR AS IT IS KNOWN TO ME.

SURVEY CALLED FOR BY BOB WILSON

SIGNED 23 DAY OF Nov 1962



MICROFILM