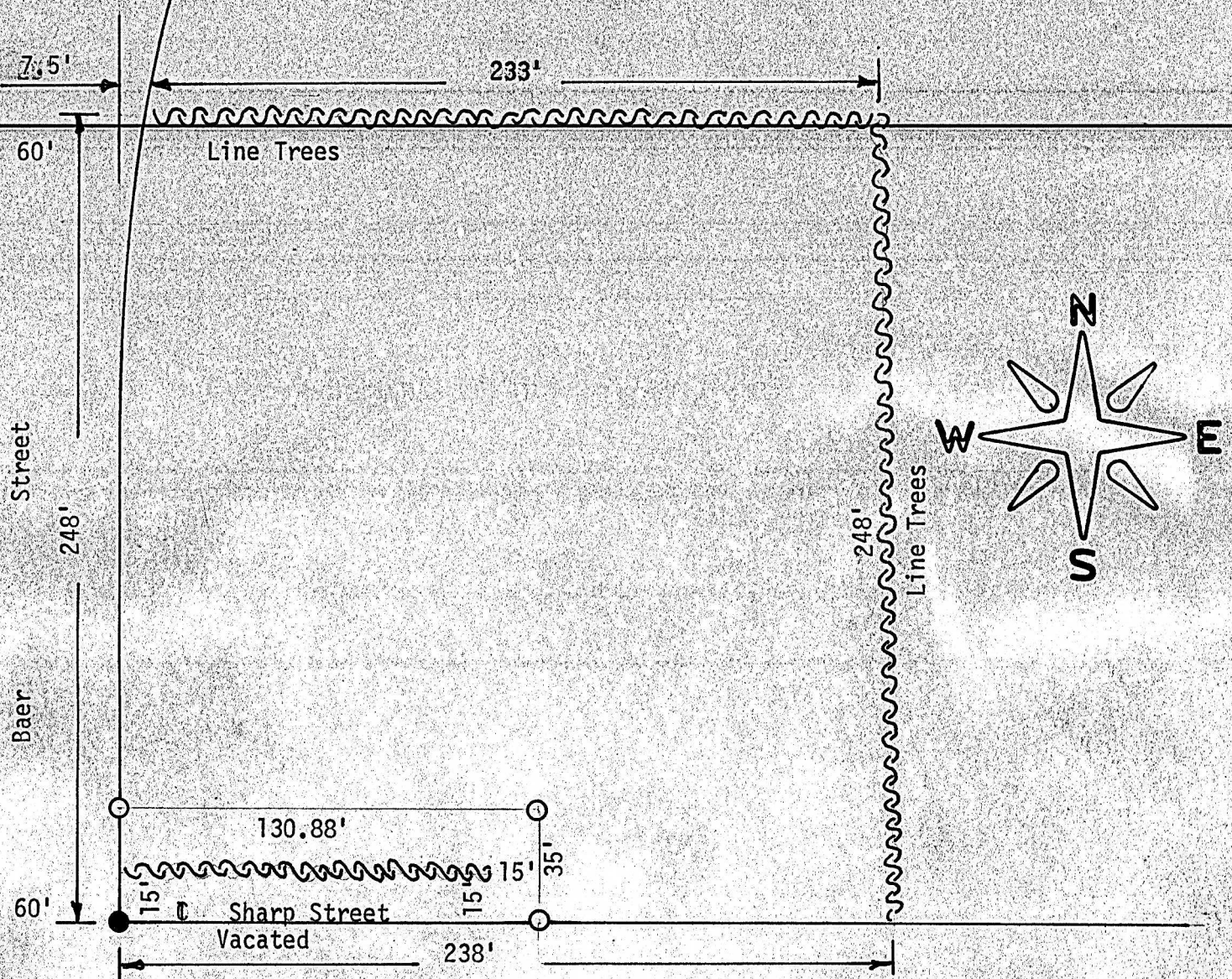


SKETCH OF TRACT OF LAND  
LYING EAST OF BAER ST.  
& NORTH OF SHARP STREET  
COLLEGE PLACE ADDITION  
MC PHERSON, KANSAS



● Pins set this survey

State of Kansas )  
County of McPherson ) SS

I, F. R. Rankin, County Engineer, do hereby certify that the above is a true sketch of property lying north of Sharp Street, now vacated and east of Baer Street in the City of McPherson, Kansas.

Survey called for by Bill Janssen

Signed this 3 day of September, 1971

*F. R. Rankin*  
F. R. Rankin, P. E.  
County Engineer  
McPherson, Kansas

