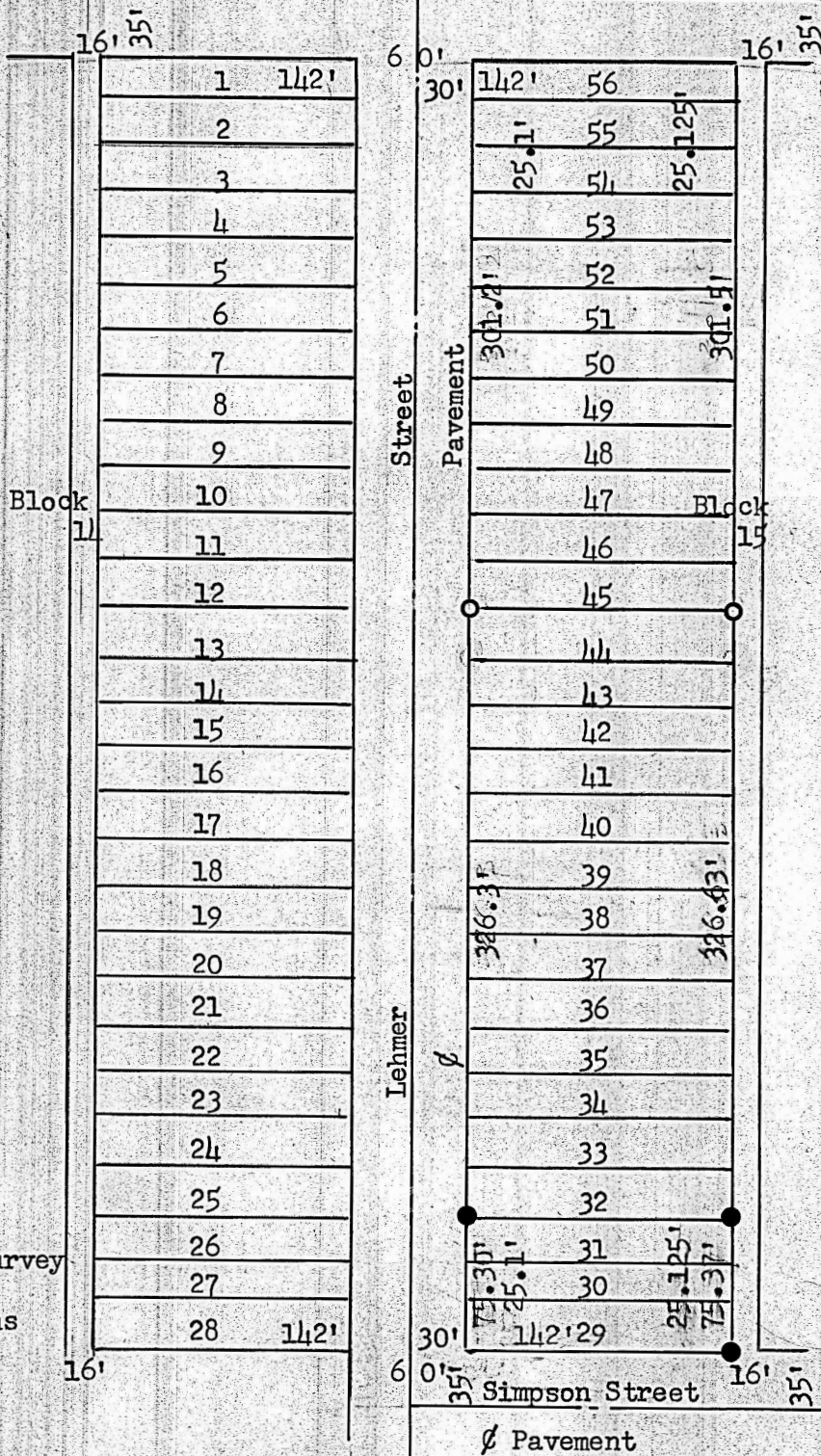


Sharp Street
Ø Pavement



Survey of Lots
32 - 33 - 34
35 - 36 - 37
38 - 39 - 40
41 - 42 - 43
44 Inc.

Block 15

College Place Addition
City of McPherson, Ks

- Pin Set on This Survey
- Pin Set on Previous Survey

State of Kansas)
McPherson County, Kansas) SS

I, Francis D. Wagner, County Engineer, McPherson County, do hereby certify I did cause to be done on the 25th day of April, 1955 a survey of Lots 32-33-34-35-36-37-38-39-40-41-42-43-44- Inc. Block 15, College Place Addition to the City of McPherson, Kansas, and that the accompanying plat is a true exhibit of said survey.

Francis D. Wagner

Francis D. Wagner
County Engineer
McPherson County

April 28, 1955

