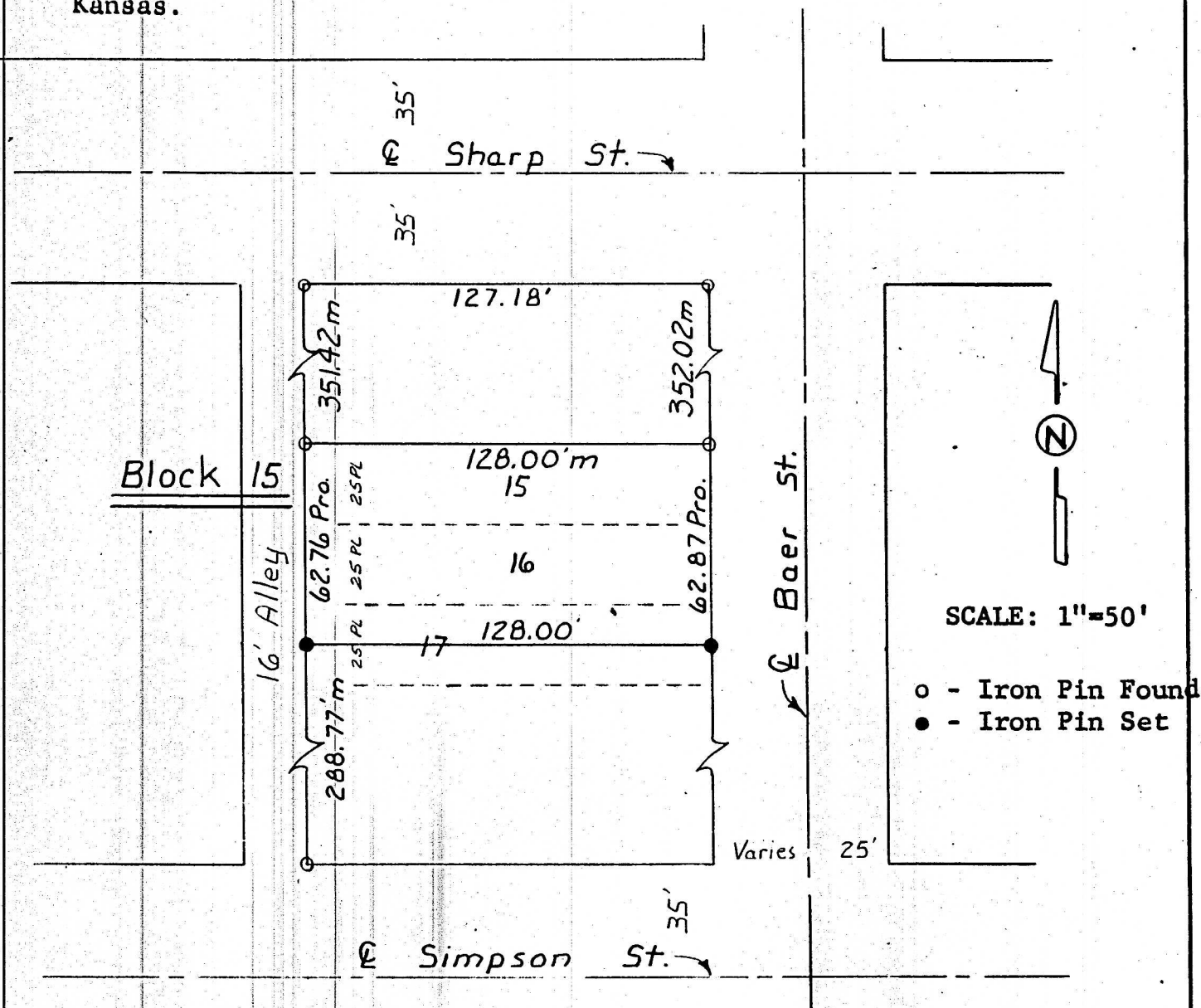


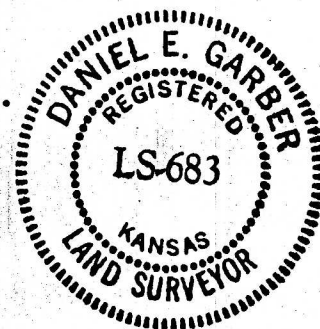
Survey for: Robert L. Wendlandt
By: Garber Surveying Service, P.A.
217 East First Avenue, Suite 9
Hutchinson, Kansas 67501
Phone 316-665-7032

DESCRIPTION: Lots 15, 16, and the North half of Lot 17, Block 15,
College Place Addition to the City of McPherson, McPherson County,
Kansas.



I hereby certify this plat to be a true, correct
and complete representation of the property described
above, as surveyed by me, this 4th day of November, 1983.

Daniel E. Garber
Daniel E. Garber RLS #683



G83-206