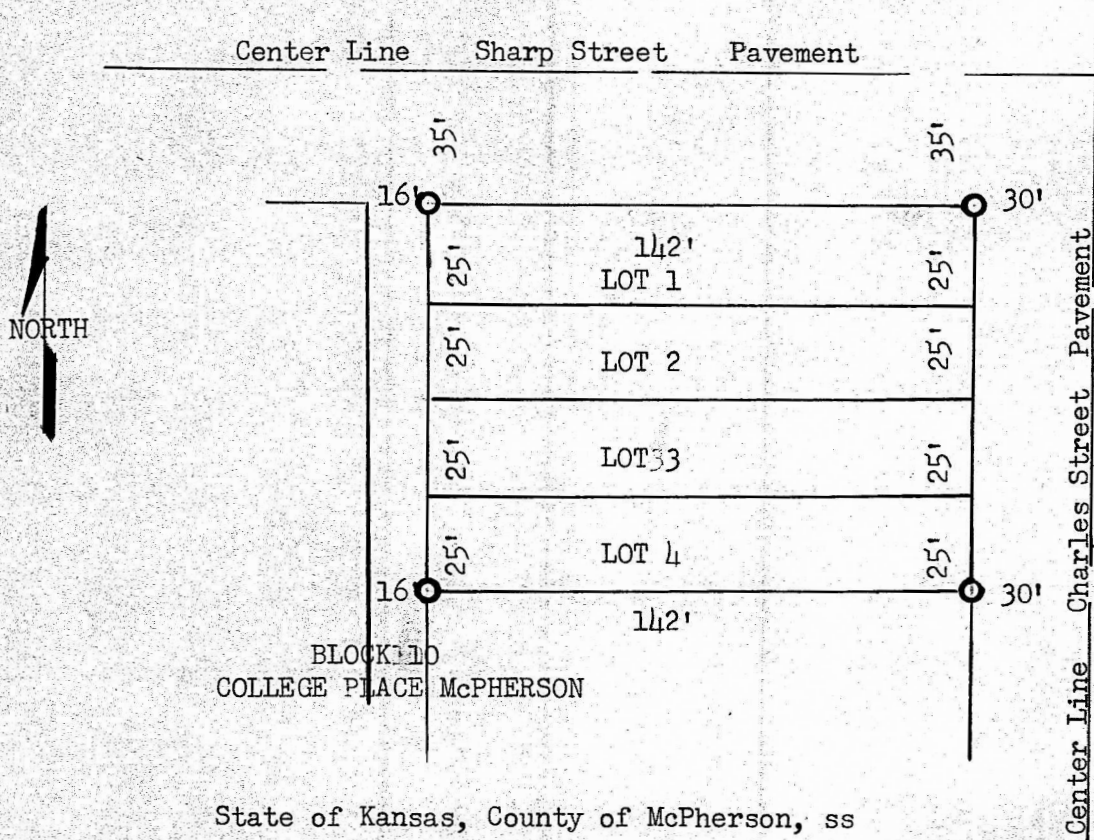


(Copy)

15th August, 1952



State of Kansas, County of McPherson, ss

I, Francis D. Wagner, County Engineer of McPherson County, Kansas did on the 15th day of August, 1952 cause to be done a survey that determined the corners of Lots 1, 2, 3, and 4, Block 10, College Place Addition to the City of McPherson and that the accompanying plat is a true exhibit of said survey.

FRANCIS D. WAGNER  
County Engineer  
McPherson County

**MICROFILM**