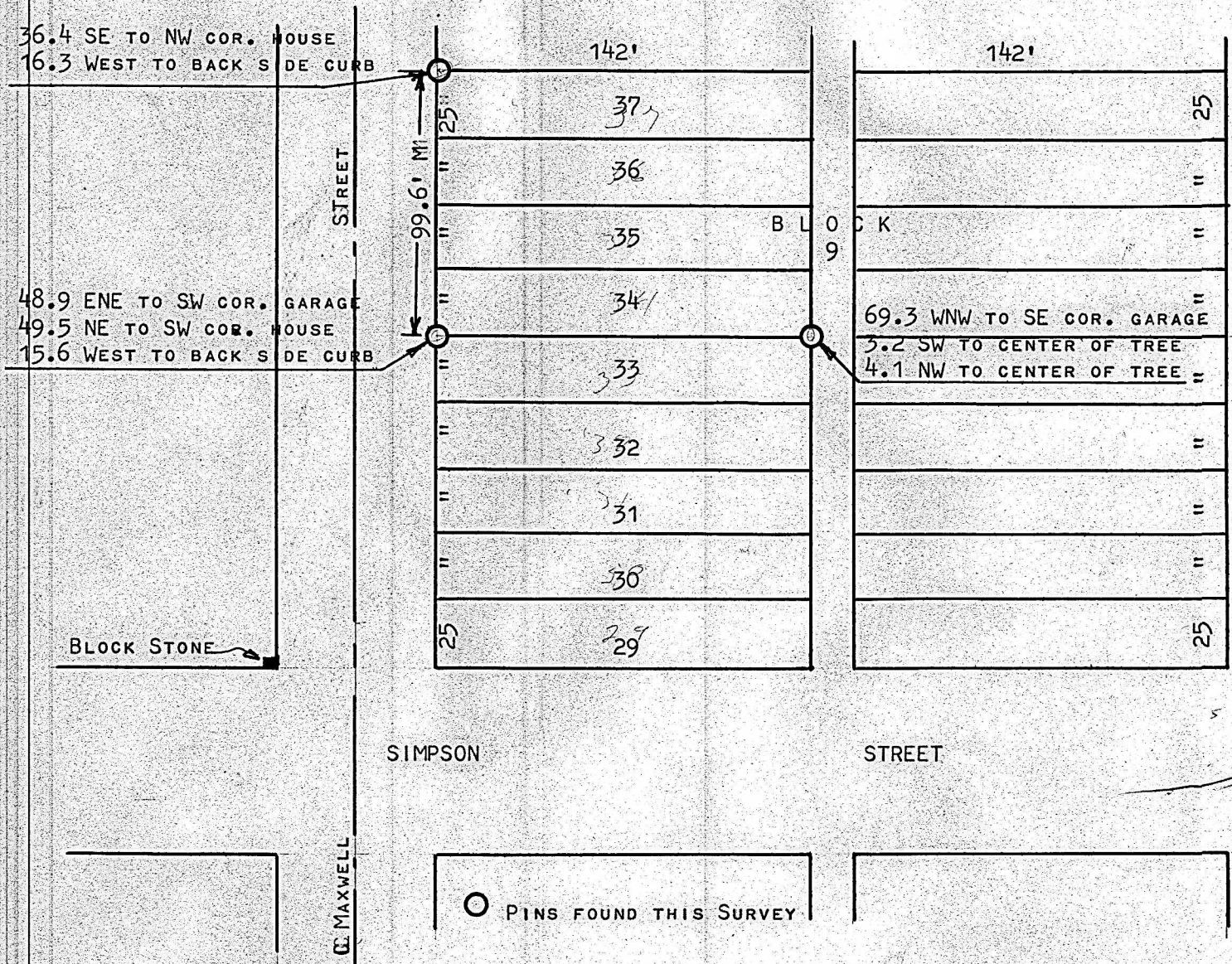


LOTS 34 TO 37 BLOCK 9
COLLEGE PLACE ADDITION



STATE OF KANSAS)
McPHERSON COUNTY) SS

I, FRANCIS R. RANKIN, PROFESSIONAL ENGINEER OF THE STATE OF KANSAS, DO HEREBY CERTIFY, THAT THE ABOVE SURVEY WAS MADE UNDER MY SUPERVISION OF LOTS 34 THROUGH 37 INC. BLOCK 9 COLLEGE PLACE ADDITION TO THE CITY OF McPHERSON, KANSAS, AND THAT THE ACCOMPANYING PLAT IS A TRUE EXHIBIT OF SAID SURVEY AS FAR AS IT IS KNOWN TO ME.

SURVEY CALLED FOR BY NORMAN NELSON

SIGNED THIS 30 DAY OF August 1962

FRANCIS RANKIN
ENGINEER & SURVEYOR
MCIPHERSON, KANSAS



MICROFILM