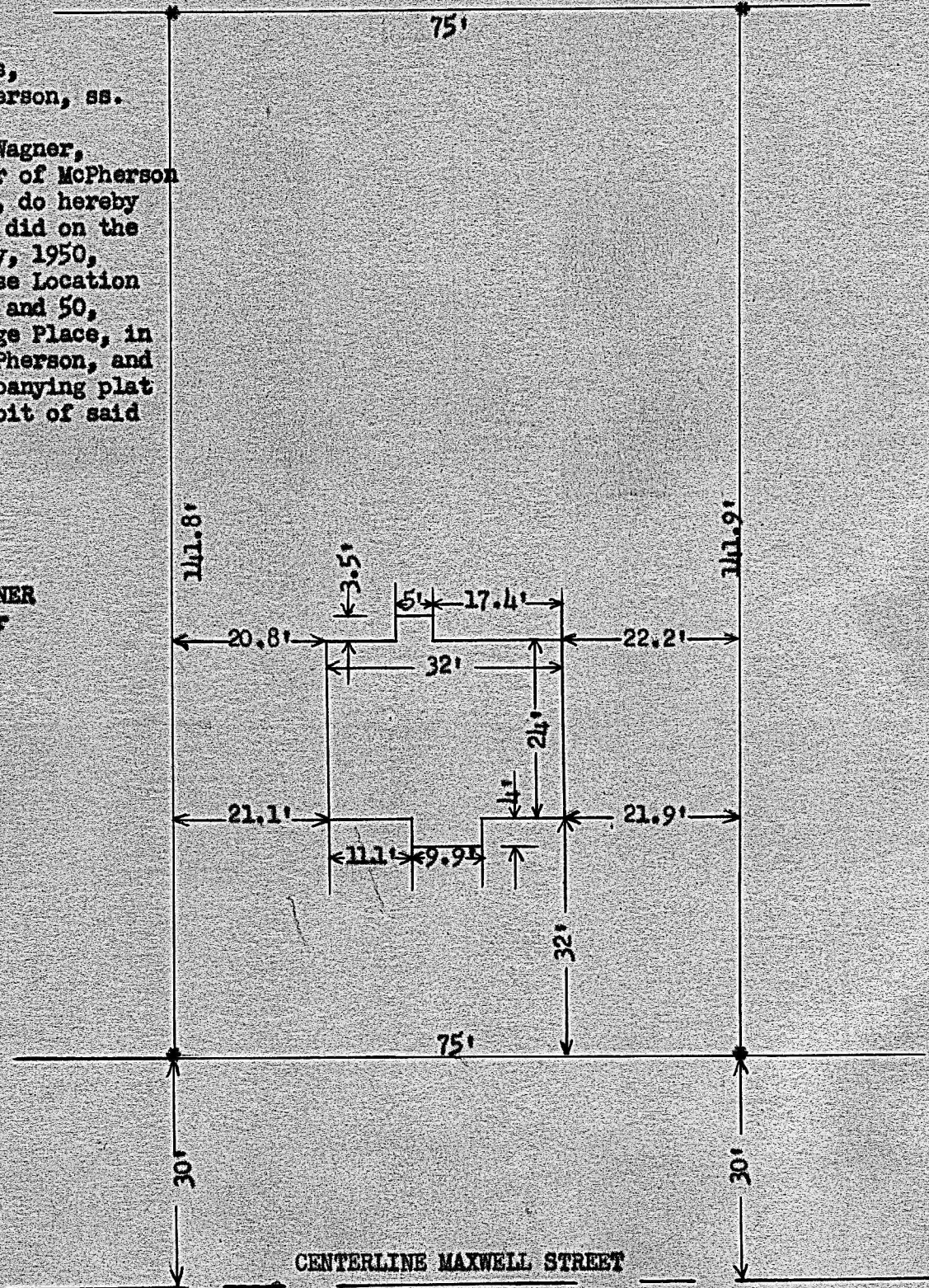


2.50
Becker

State of Kansas,
County of McPherson, ss.

I, Francis D. Wagner,
County Engineer of McPherson
County, Kansas, do hereby
certify that I did on the
27th day of May, 1950,
survey the House Location
on Lots 48, 49 and 50,
Block 9, College Place, in
the City of McPherson, and
that the accompanying plat
is a true exhibit of said
survey.

FRANCIS D. WAGNER
County Engineer



MICROFILM