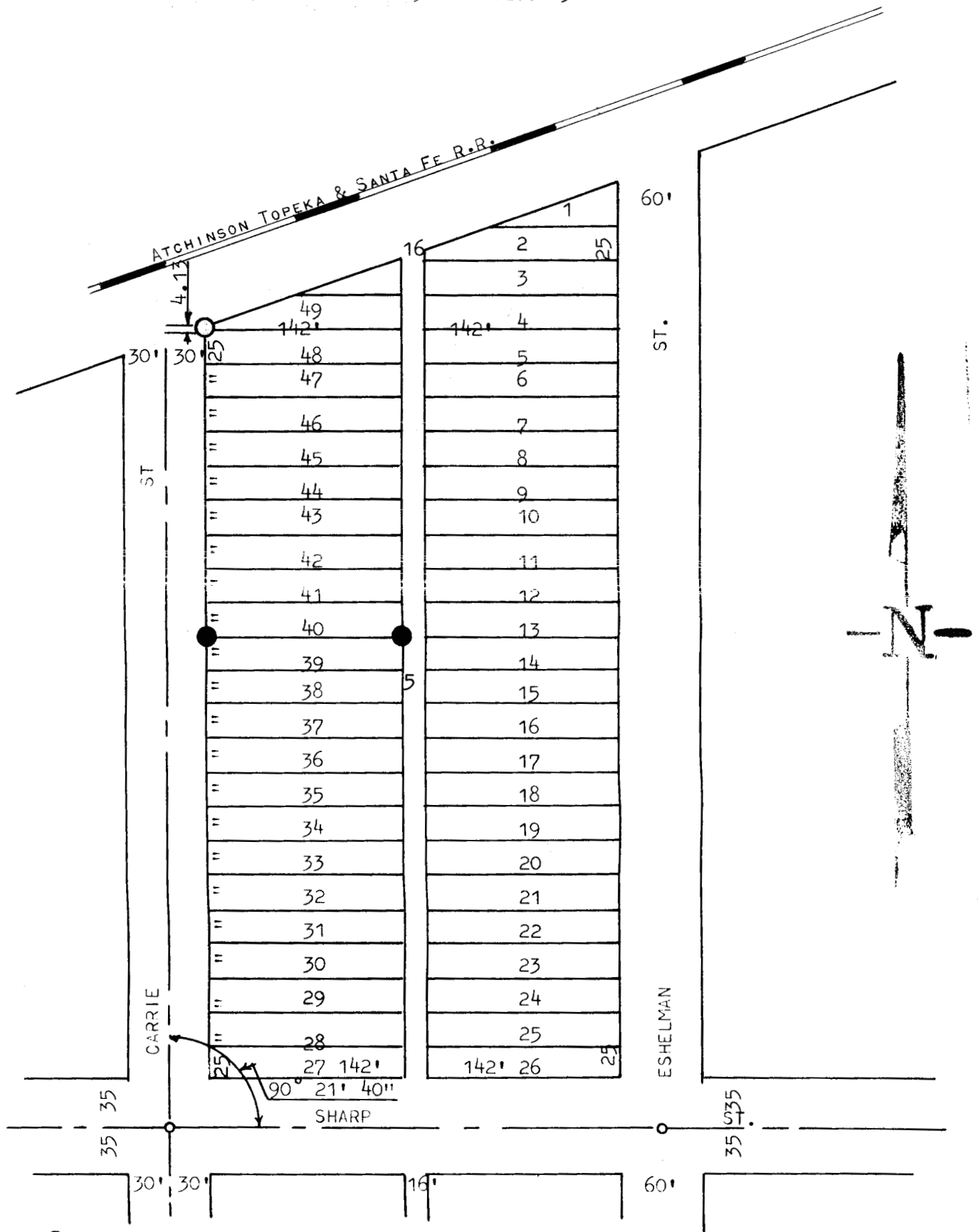


COLLEGE PLACE ADDITION
LOTS 40 TO 49 INC. BLOCK 5



- PINS FOUND THIS SURVEY
- PINS SET THIS SURVEY
- NAILS SET THIS SURVEY

STATE OF KANSAS)
McPHERSON COUNTY) SS

I, FRANCIS R. RANKIN PROFESSIONAL ENGINEER OF THE STATE OF KANSAS
DO HEREBY CERTIFY, THAT THE ABOVE SURVEY WAS MADE UNDER MY SUPERVISION
OF LOTS 40 THROUGH 49 INC. BLOCK 5 COLLEGE PLACE ADDITION TO THE CITY
OF MCPHERSON, KANSAS, AND THAT THE ACCOMPANYING PLAT IS TRUE EXHIBIT
OF SAID SURVEY AS FAR AS IT IS KNOWN TO ME.

SURVEY CALLED FOR BY CHARLES R. NELSON & SON

SIGNED THIS- 8/3 DAY OF August 1962

