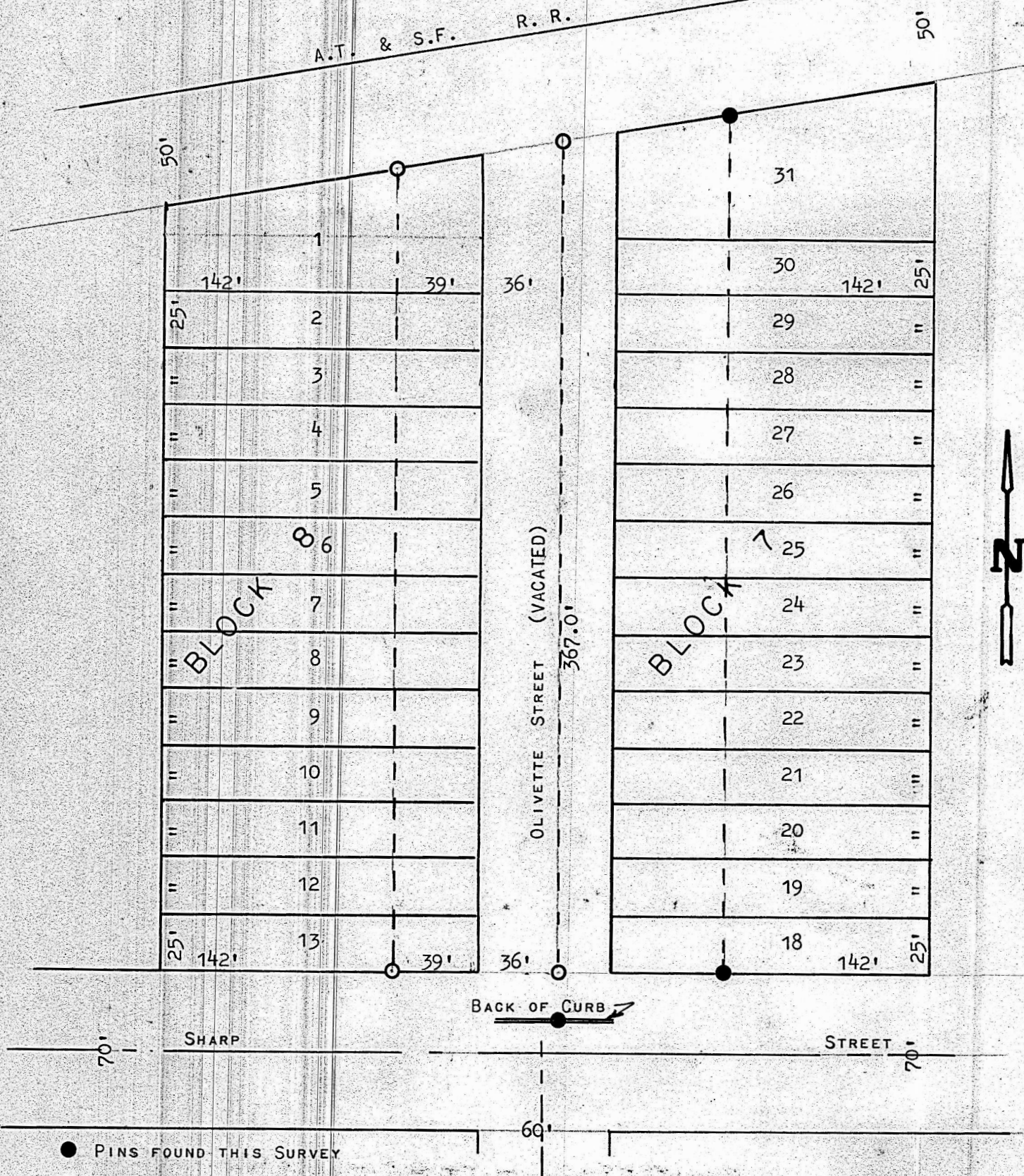


A SURVEY OF THE EAST 39' OF LOTS 1 TO 13 INC. BLOCK 8  
COLLEGE PLACE ADDITION & THE WEST 36' OF OLIVETTE  
STREET NOW VACATED



- PINS FOUND THIS SURVEY
- PINS SET THIS SURVEY

STATE OF KANSAS )  
COUNTY OF McPHERSON ) SS

I, FRANCIS RANKIN, COUNTY ENGINEER OF McPHERSON COUNTY KANSAS DO HEREBY CERTIFY THAT UNDER MY SUPERVISION A SURVEY WAS MADE OF THE EAST 39 FEET OF LOTS ONE(1) TO THIRTEEN(13) INCLUSIVE, BLOCK EIGHT(8), COLLEGE PLACE ADDITION TO THE CITY OF McPHERSON, AND THE WEST 36 FEET OF THAT PART OF THE NW1/4 OF SECTION 27, TOWNSHIP 19 SOUTH, RANGE 3 WEST OF THE 6TH P. M., THAT LIES NORTH OF SHARP STREET AND BETWEEN BLOCKS SEVEN(7) AND EIGHT(8) OF COLLEGE PLACE ADDITION TO THE CITY OF McPHERSON, FORMERLY PLATTED AS OLIVETTE STREET, NOW VACATED, AND THAT THE ACCOMPANYING PLAT IS A TRUE EXHIBIT OF SAID SURVEY AS FAR AS IT IS KNOWN TO ME.

SURVEY CALLED FOR BY JACK EASTER

SIGNED THIS 17 DAY OF SEPTEMBER, 1968.

*Francis Rankin*  
FRANCIS RANKIN  
COUNTY ENGINEER  
McPHERSON COUNTY, KANSAS



MICROFILM