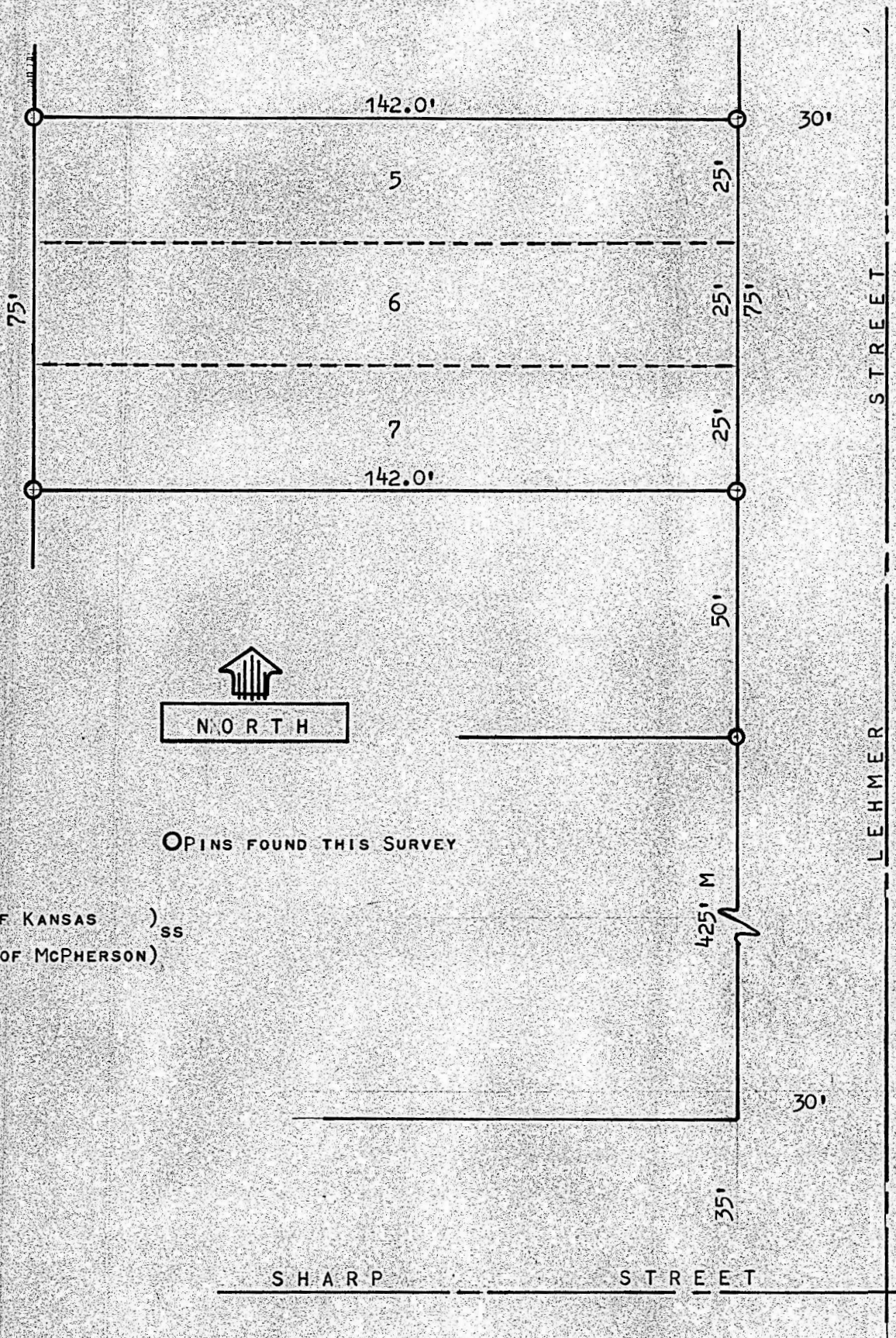


A SURVEY OF LOTS 5, 6, & 7 BLOCK 3  
COLLEGE PLACE ADD. TO THE CITY OF  
McPHERSON, KANSAS



I, FRANCIS RANKIN, COUNTY ENGINEER OF MCPHERSON COUNTY, KANSAS, DO HEREBY  
CERTIFY THAT UNDER MY SUPERVISION A SURVEY WAS MADE OF LOTS 5, 6 & 7 OF  
BLOCK 3, COLLEGE PLACE ADDITION TO THE CITY OF MCPHERSON, KANSAS, AND THE  
ABOVE PLAT IS A TRUE EXHIBIT OF SAID SURVEY AS FAR AS IT IS KNOWN TO ME.

SURVEY CALLED FOR BY DEAN FASNACHT.

SIGNED ON THIS 25 DAY OF MAY, 1971.

F. R. RANKIN

COUNTY ENGINEER

MCPHERSON CO., KANSAS



MICROFILM