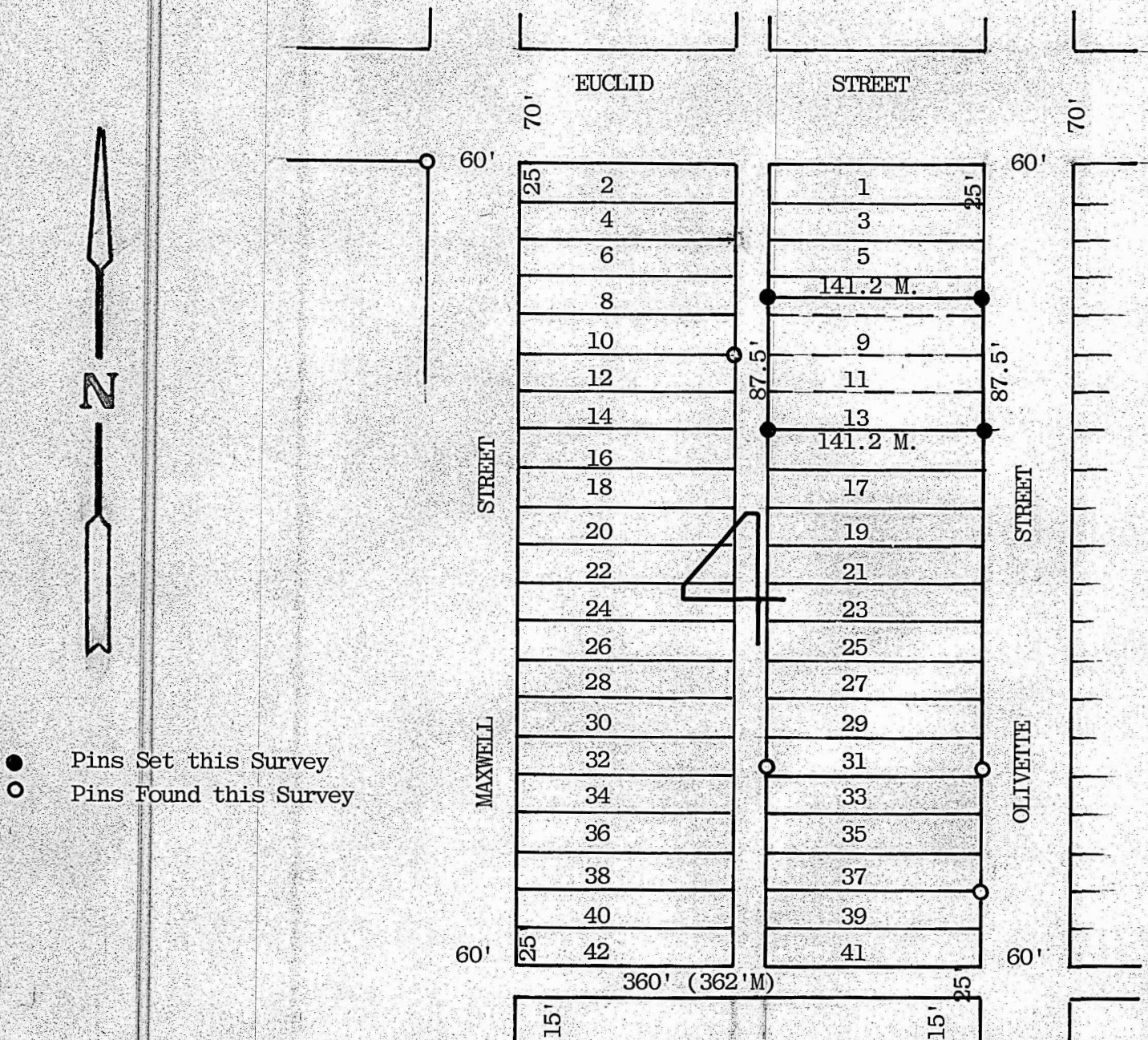


A SURVEY IN BLOCK 4  
COLLEGE HILL ADDITION  
MC PHERSON, KANSAS



STATE OF KANSAS )  
COUNTY OF MC PHERSON) S.S.

I, Melvin Ferguson, County Engineer, of McPherson County, Kansas, do hereby certify that under my supervision a survey was made of the South  $\frac{1}{2}$  of Lot 7 and all of Lots 9, 11 and 13, Block 4, College Hill Addition to McPherson, Kansas and that the above plat is a true exhibit of said survey as far as it is known to me.

Survey called for by Paul Wagoner

Signed this 22nd day of April, 1975

*Melvin Ferguson*  
Melvin Ferguson  
County Engineer  
McPherson, Kansas

MELVIN V. FERGUSON  
LICENSED  
6772  
KANSAS  
PROFESSIONAL ENGINEER

MICROFILM