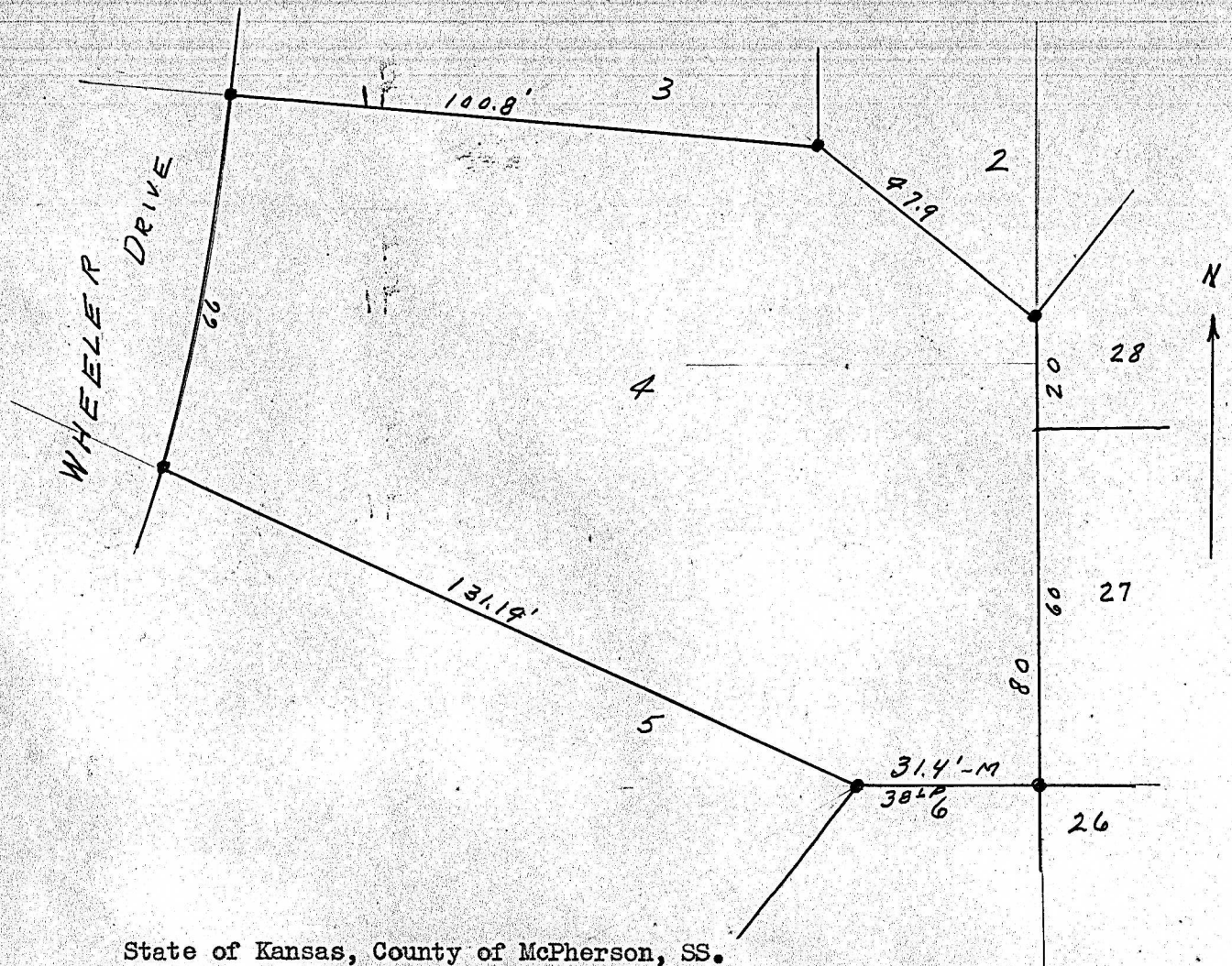


Lot 4, Block 2, Clearview Heights Addition

McPherson, Kansas.



State of Kansas, County of McPherson, SS.

I, G.D. Johnson, Licensed Civil Engineer of the State of Kansas, do hereby certify that I did on the 2nd. day of July survey Lot 4, Block 2, Clearview Heights Addition to the City of McPherson, Kansas and that accompanying plat is a true exhibit of said survey.

*G.D. Johnson*