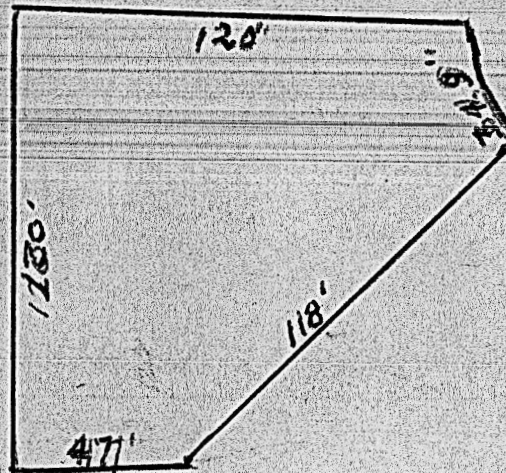


PLAT OF

Lot 18 of Block 1 in Clearview Heights, McPherson, Kansas.



STATE OF KANSAS, McPherson County., ss.,

This is to Certify, That, I, H. A. Rowland, a Licensed Professional Engineer of the State of Kansas, have surveyed the tract as above shown and marked the corners thereof. Dated this 28th., day of February 1954. Said tract is known as Lot 18 in Block 1 of Clearview Heights an Addition to the City of McPherson, Kansas.

Signed:- H. A. Rowland
Professional Engineer.

