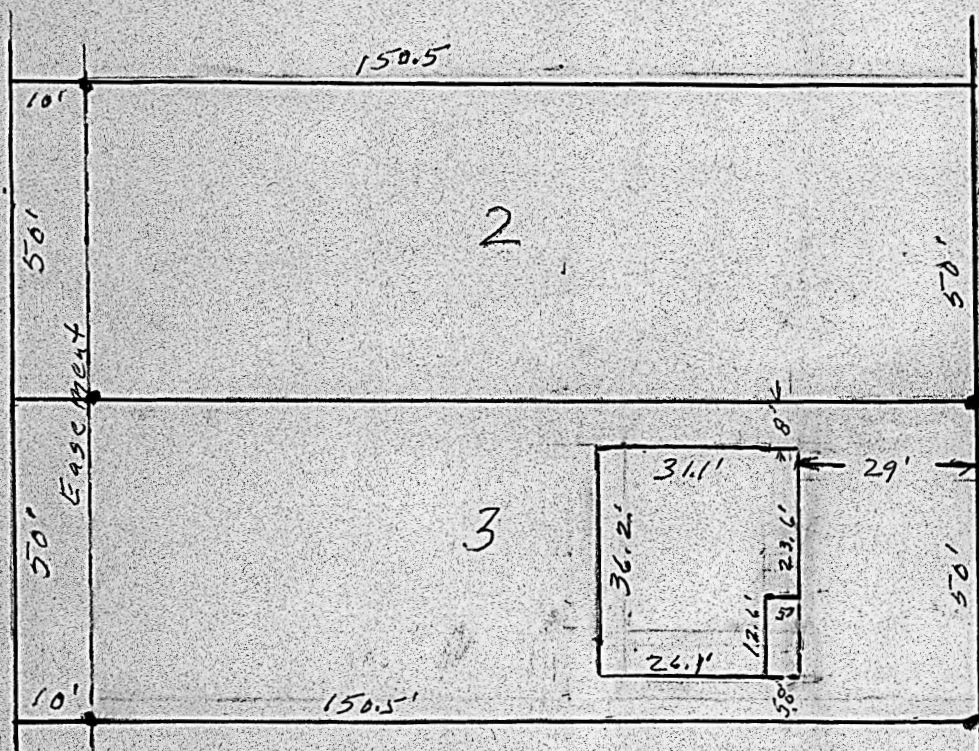


Lot 3., Block 6., Clark's, Addition, McPherson, Kansas.



State of Kansas,)
County of McPherson,) SS.

I, G.D. Johnson, Licensed Civil Engineer on the State of Kansas, do hereby certify that on the 18th day of April 1968 I surveyed and determined locations of improvements of Lot 3, Block 6, of Clark's Addition to the City of McPherson, Kansas. That said improvements do not encroach of any Street, alley, easement or adjoining property.

I also certify that accompanying plat is a true exhibit of said survey.

G. D. Johnson
G. D. Johnson, Engineer.

MICROFILM

