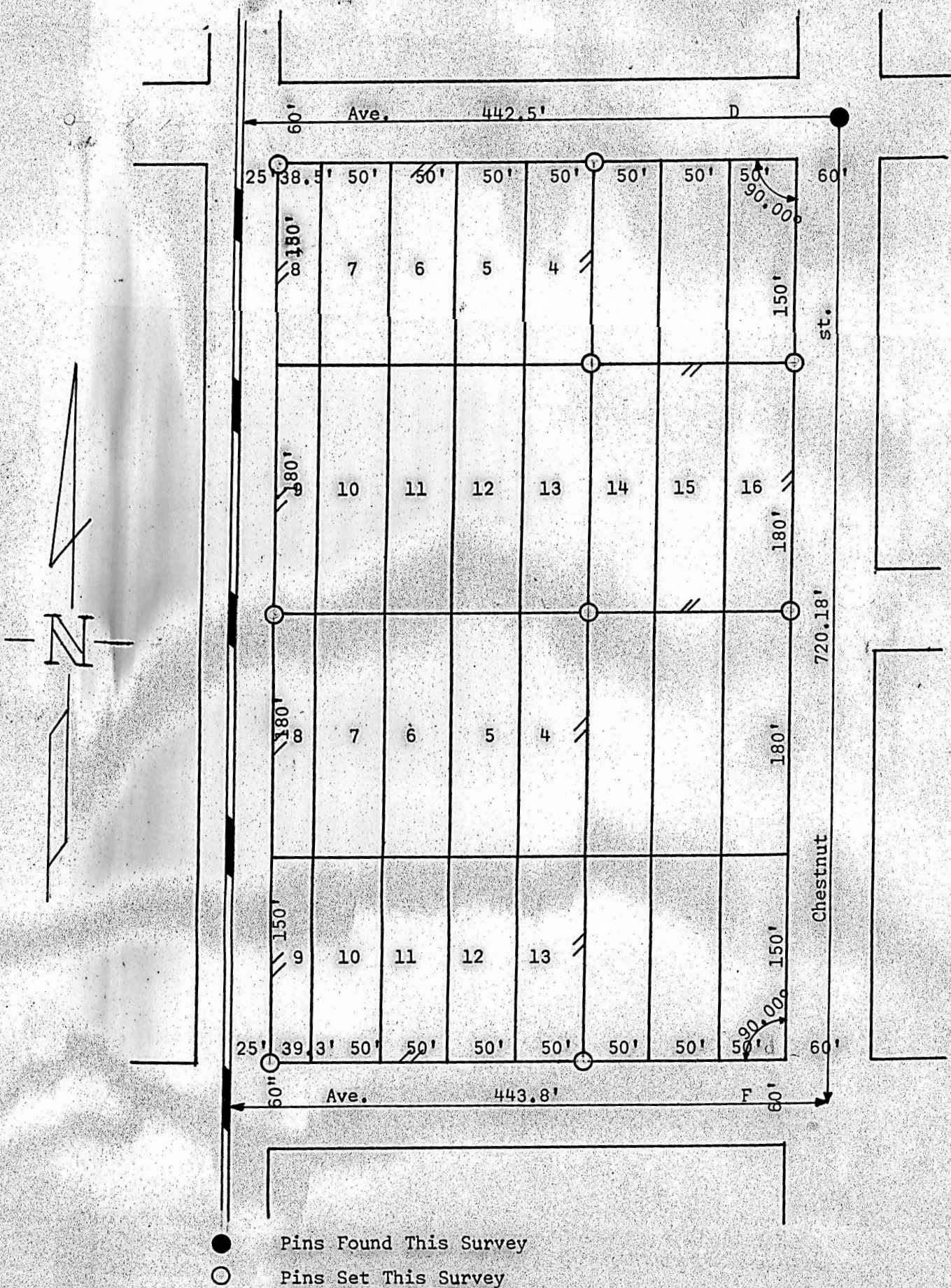


A SURVEY OF BLOCKS
4 AND 10 CLARKES THIRD ADD.
CITY OF MCPHERSON, KANSAS



State of Kansas) SS
County of McPherson)

I, Francis R. Rankin, County Engineer of McPherson County, Kansas, do hereby certify that on the 6th day of December, 1962, I did cause to be done a survey of Lots 4 through 16 Block 4 and Lots 3 through 13 Block 10 of Clarkes Third Addition to the City of McPherson, Kansas, and that the accompanying plat is a true exhibit of said survey as far as it is known to me.

MICROFILM

December 11, 1962



Francis R. Rankin
County Engineer
McPherson County