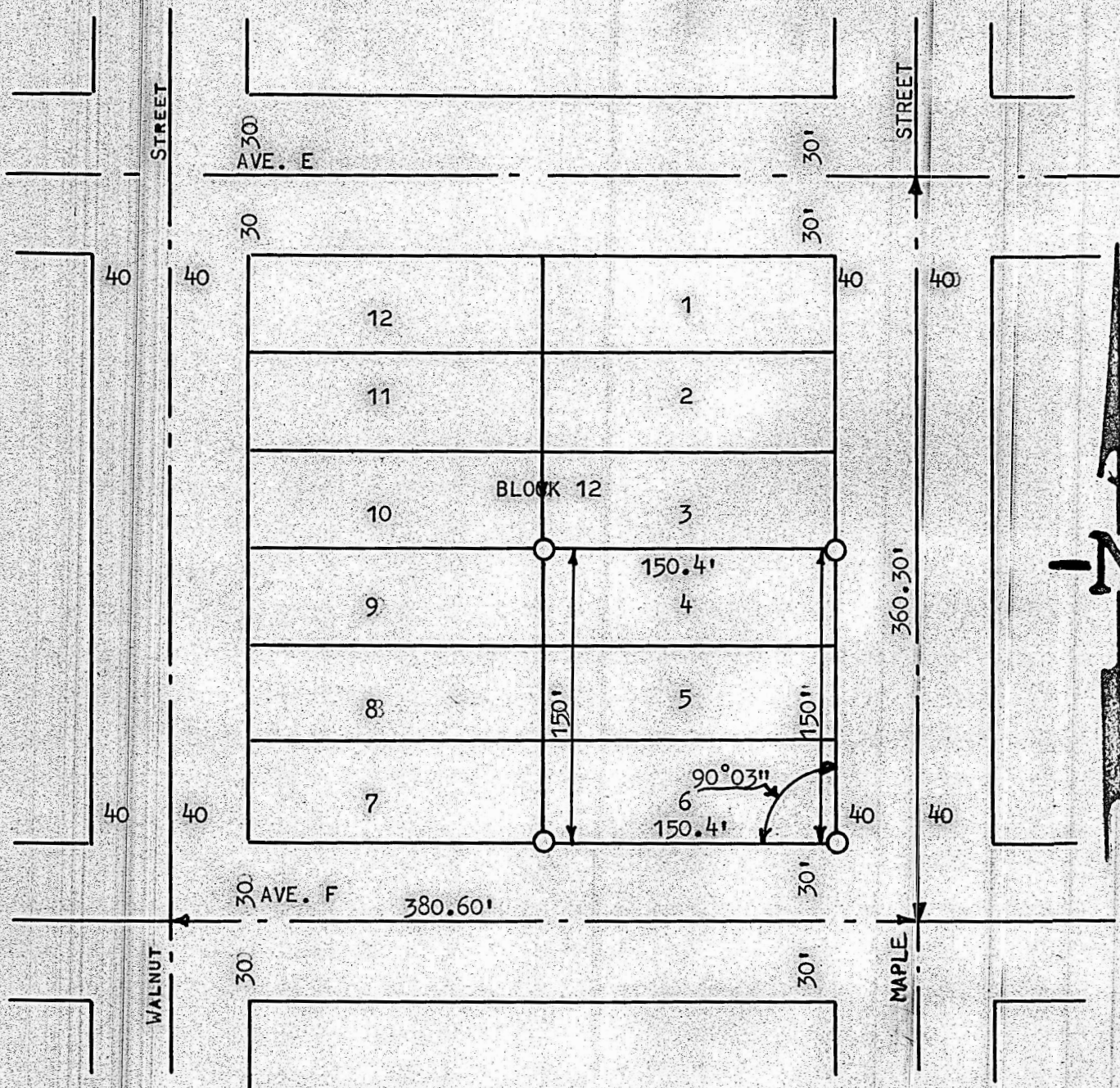


CLARKES 3RD ADD.
LOTS 4,5,6 BLOCK 12
MCPHERSON, KANSAS



○ PINS SET THIS SURVEY

STATE OF KANSAS)
McPHERSON, COUNTY) SS

I, FRANCIS R. RANKIN PROFESSIONAL ENGINEER OF THE STATE OF KANSAS, DO HERBY CERTIFY THAT THE ABOVE SURVEY WAS MADE UNDER MY SUPERVISION OF LOTS 4-5-6 BLOCK 12, CLARKES 3RD ADDITION TO THE CITY OF MCPHERSON, KANSAS, AND THAT THE ACCOMPANYING PLAT IS A TRUE EXHIBIT OF SAID SURVEY AS FAR AS IT IS KNOWN TO ME.

SURVEY CALLED FOR BY PYLE CONST. CO.

SIGNED THIS 27 DAY OF June 1963



MICROFILM