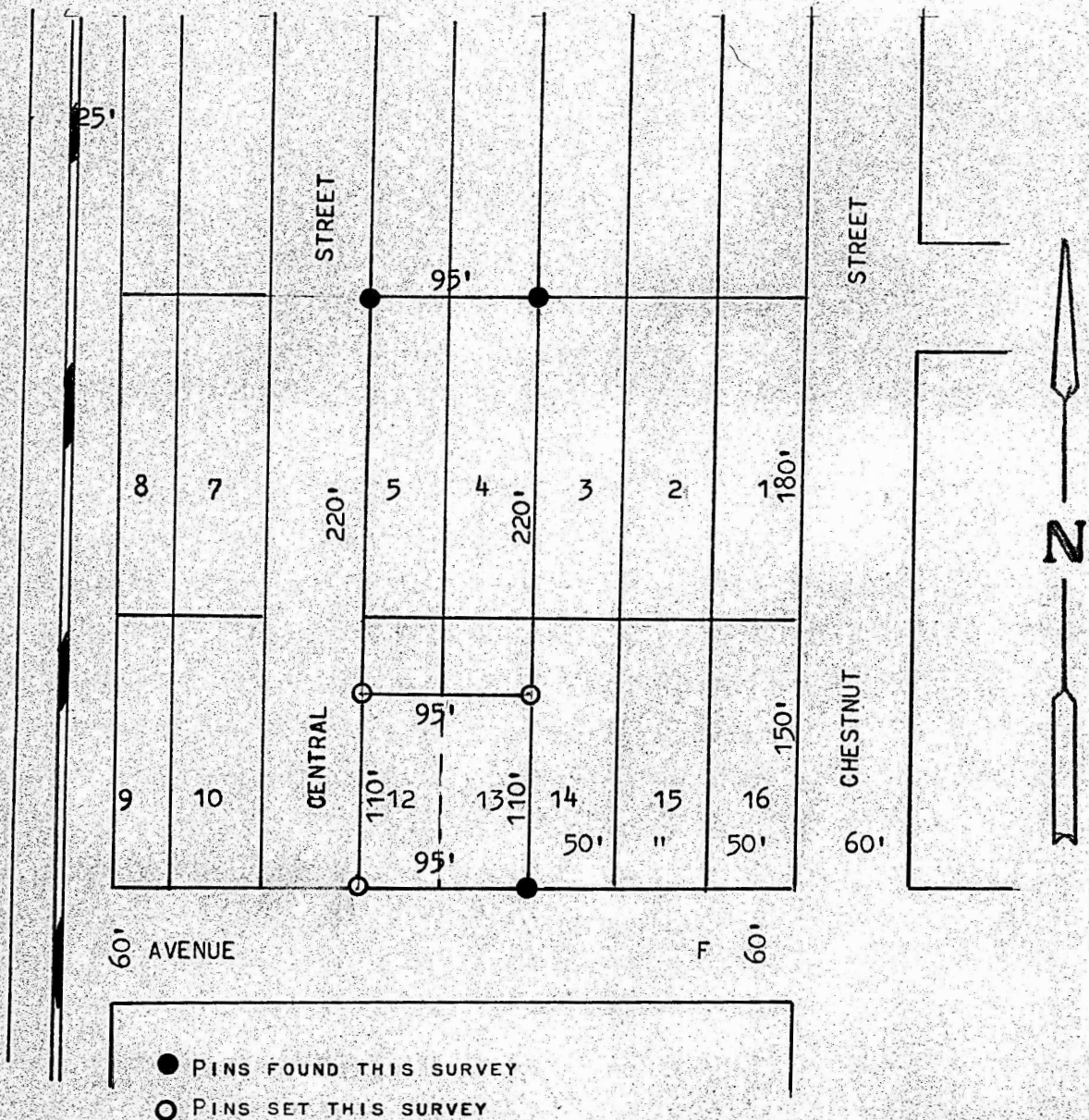


A SURVEY IN BLOCK 10, CLARKES THIRD  
ADDITION, MCPHERSON, KANSAS



STATE OF KANSAS )  
COUNTY OF MCPHERSON ) SS

I, FRANCIS RANKIN, PROFESSIONAL ENGINEER OF THE STATE OF KANSAS,  
DO HEREBY CERTIFY THAT UNDER MY SUPERVISION A SURVEY WAS MADE  
OF THE SOUTH 110 FEET OF THE EAST 45 FEET OF LOT 12 AND SOUTH  
110 FEET OF LOT 13, BLOCK 10 CLARKES THIRD ADDITION TO THE CITY  
OF MCPHERSON, KANSAS, AND THAT THE THE ACCOMPANYING PLAT IS A  
TRUE EXHIBIT OF SAID SURVEY AS FAR AS IT IS KNOWN TO ME.

SURVEY CALLED FOR BY RALPH RHODES

SIGNED THIS 30 DAY OF OCTOBER, 1972

*Francis Rankin*  
FRANCIS RANKIN  
PROFESSIONAL ENGINEER  
MCPHERSON, KANSAS



MICROFILM

MICROFILM