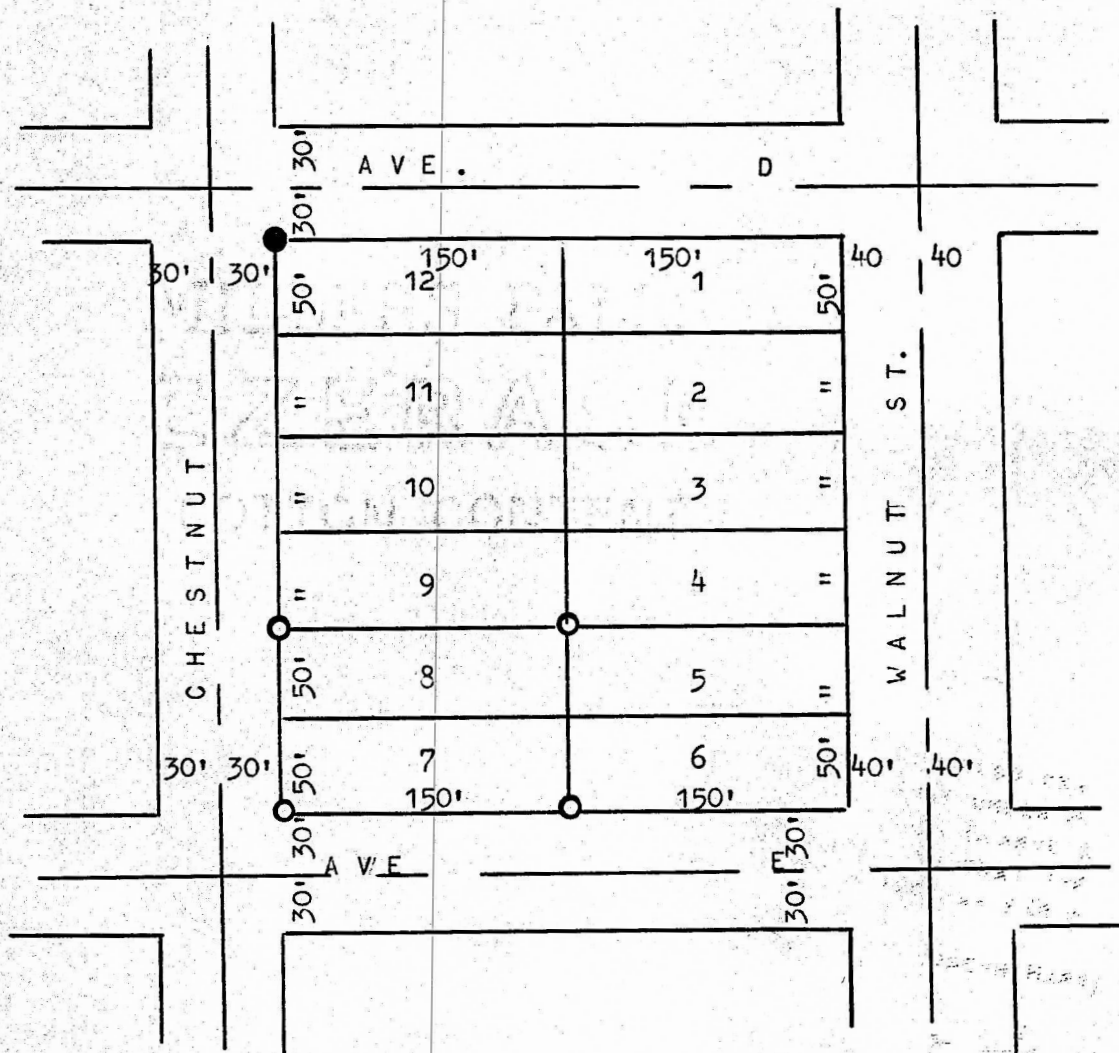


A SURVEY OF LOTS 7 AND 8, BLOCK 3, CLARKE'S 3RD ADD.  
MCPHERSON, KANSAS



- PINS FOUND THIS SURVEY
- PINS SET THIS SURVEY

STATE OF KANSAS )  
COUNTY OF MCPHERSON ) SS:

I, FRANCIS RANKIN, PROFESSIONAL ENGINEER OF THE STATE OF KANSAS  
DO HEREBY CERTIFY THAT UNDER MY SUPERVISION A SURVEY WAS MADE OF  
LOTS 7 AND 8, BLOCK 3, CLARKE'S 3RD ADDITION, TO THE CITY OF  
MCPHERSON, KANSAS, AND THAT THE THE ACCOMPANYING PLAT IS A TRUE  
EXHIBIT OF SAID SURVEY AS FAR AS IT IS KNOWN TO ME.

SURVEY CALLED FOR BY JOSEPH HARRINGTON

SIGNED THIS 4 DAY OF JULY 1973

FRANCIS RANKIN  
PROFESSIONAL ENGINEER  
MCPHERSON, KANSAS



MICROFILM