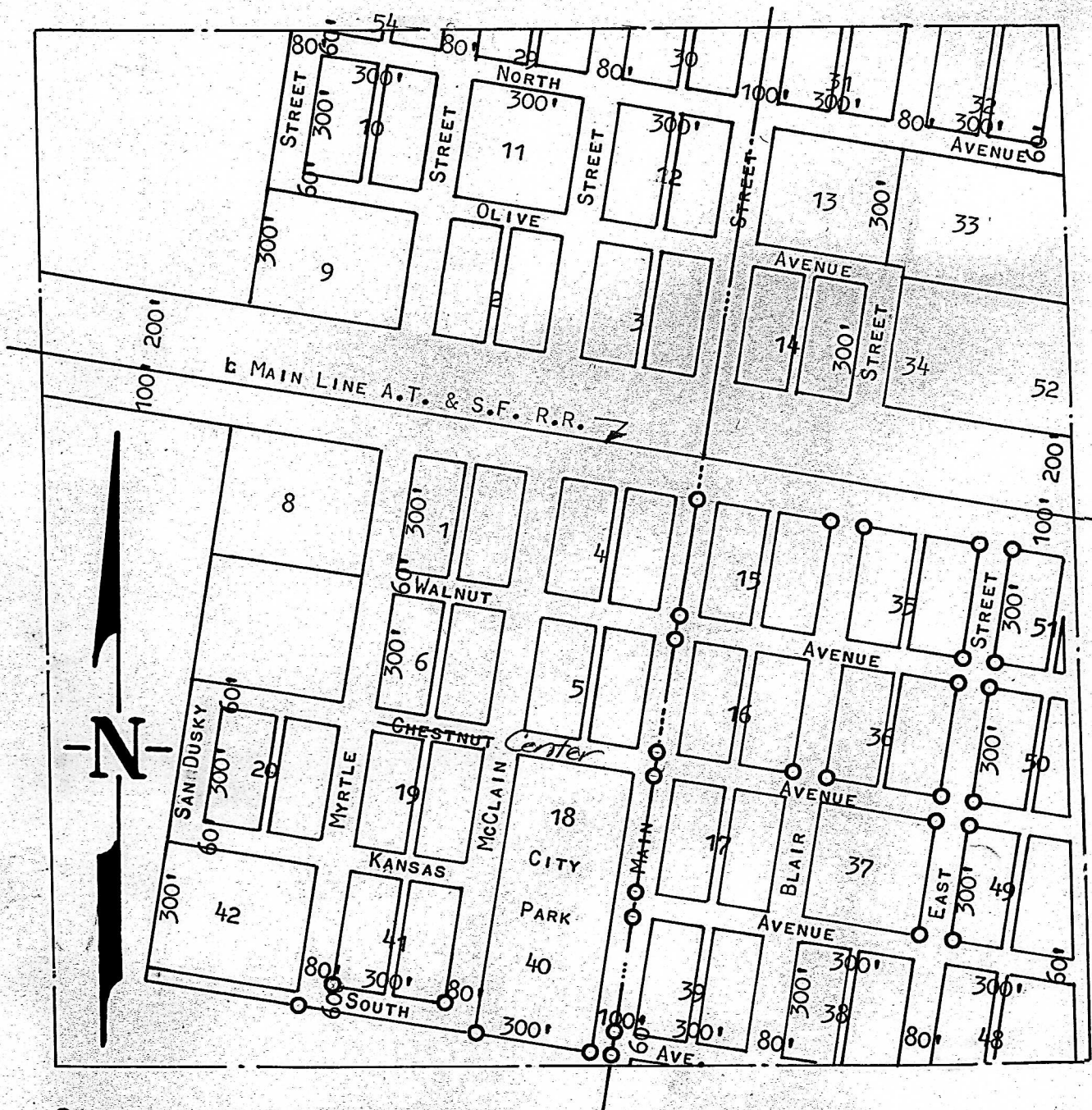


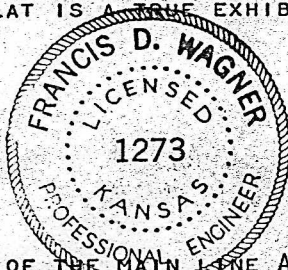
A SURVEY IN THE CITY OF
WINDOM, KANSAS



○ PINS SET THIS SURVEY

STATE OF KANSAS) SS
COUNTY OF McPHERSON)

I, FRANCIS D. WAGNER, COUNTY ENGINEER OF McPHERSON COUNTY, KANSAS,
DO HEREBY CERTIFY THAT I DID CAUSE TO BE DONE ON THE 6TH DAY OF AUGUST, 1959
A SURVEY OF EAST STREET AND SOUTH AVENUE, CITY OF WINDOM, KANSAS, AND THAT
THE ACCOMPANYING PLAT IS A TRUE EXHIBIT OF SAID SURVEY.



Francis D. Wagner

FRANCIS D. WAGNER
COUNTY ENGINEER
McPHERSON COUNTY

MICROFILMED 20 AUGUST, 1959

NOTE: CENTER LINE OF THE MAIN LINE A.T. & S.F. R.R. TRACT WAS USED AS THE
NORTH-SOUTH BASE LINE AND THE CENTER LINE OF MAIN STREET AS THE
EAST-WEST BASE LINE FOR THIS SURVEY. THIS PROCEDURE CHECKED
EXISTING STRUCTURES, FENCES AND WALK VERY WELL.