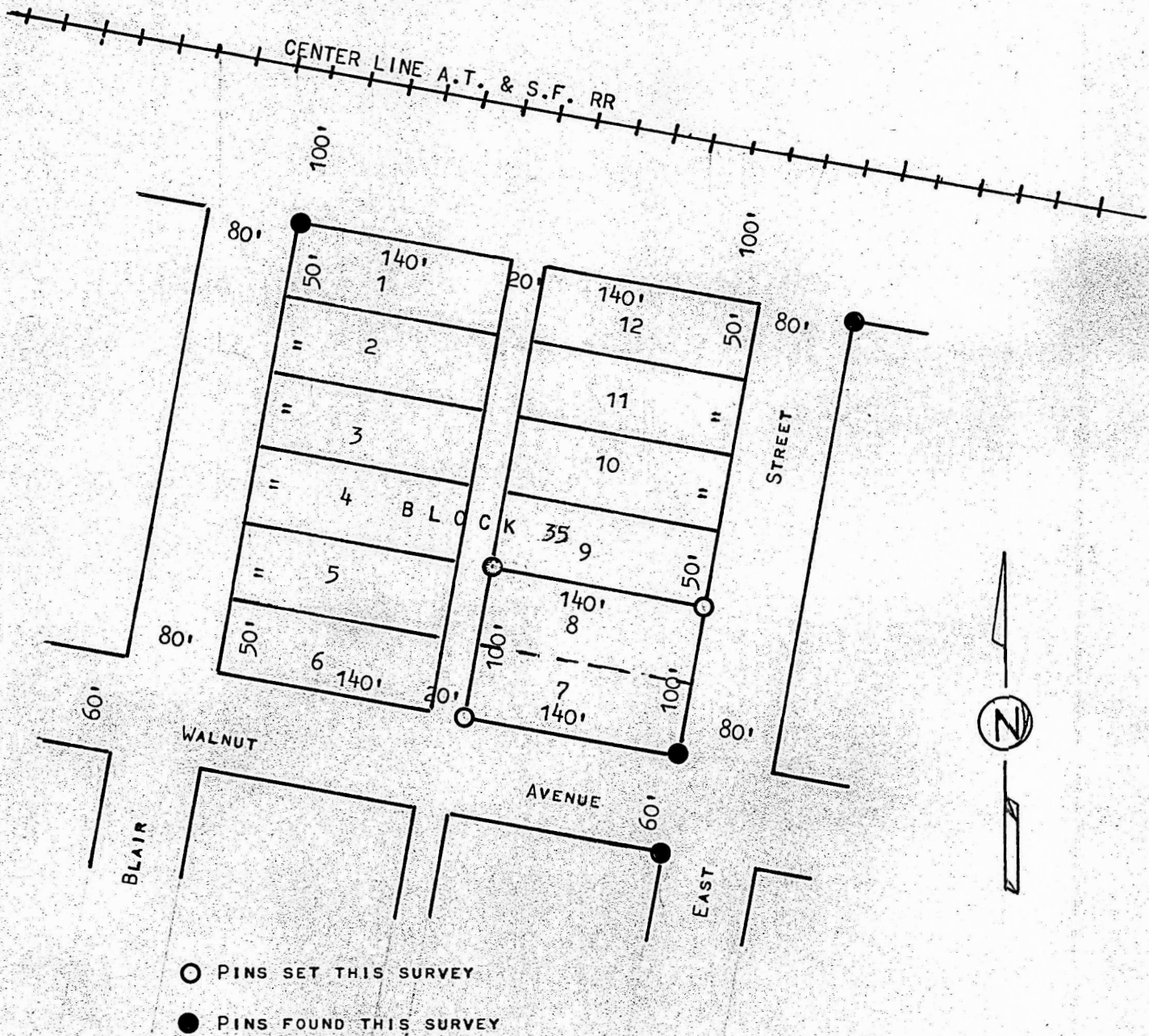


A SURVEY OF LOTS 7 AND 8, BLOCK 35
WINDOM, KANSAS



STATE OF KANSAS)
COUNTY OF MCPHERSON) SS

I, MELVIN FERGUSON, PROFESSIONAL ENGINEER OF THE STATE OF KANSAS DO HEREBY CERTIFY THAT UNDER MY SUPERVISION A SURVEY OF LOTS 7, AND 8, BLOCK 35, TO THE CITY OF WINDOM, KANSAS WAS MADE AND THAT THE ACCOMPANYING PLAT IS A TRUE EXHIBIT OF SAID SURVEY AS FAR AS IT IS KNOWN TO ME.

SURVEY CALLED FOR BY DORTHY CRUM

SIGNED THIS 17th DAY OF JULY, 1978

Melvin Ferguson
MELVIN FERGUSON
PROFESSIONAL ENGINEER
MCPHERSON, KANSAS

