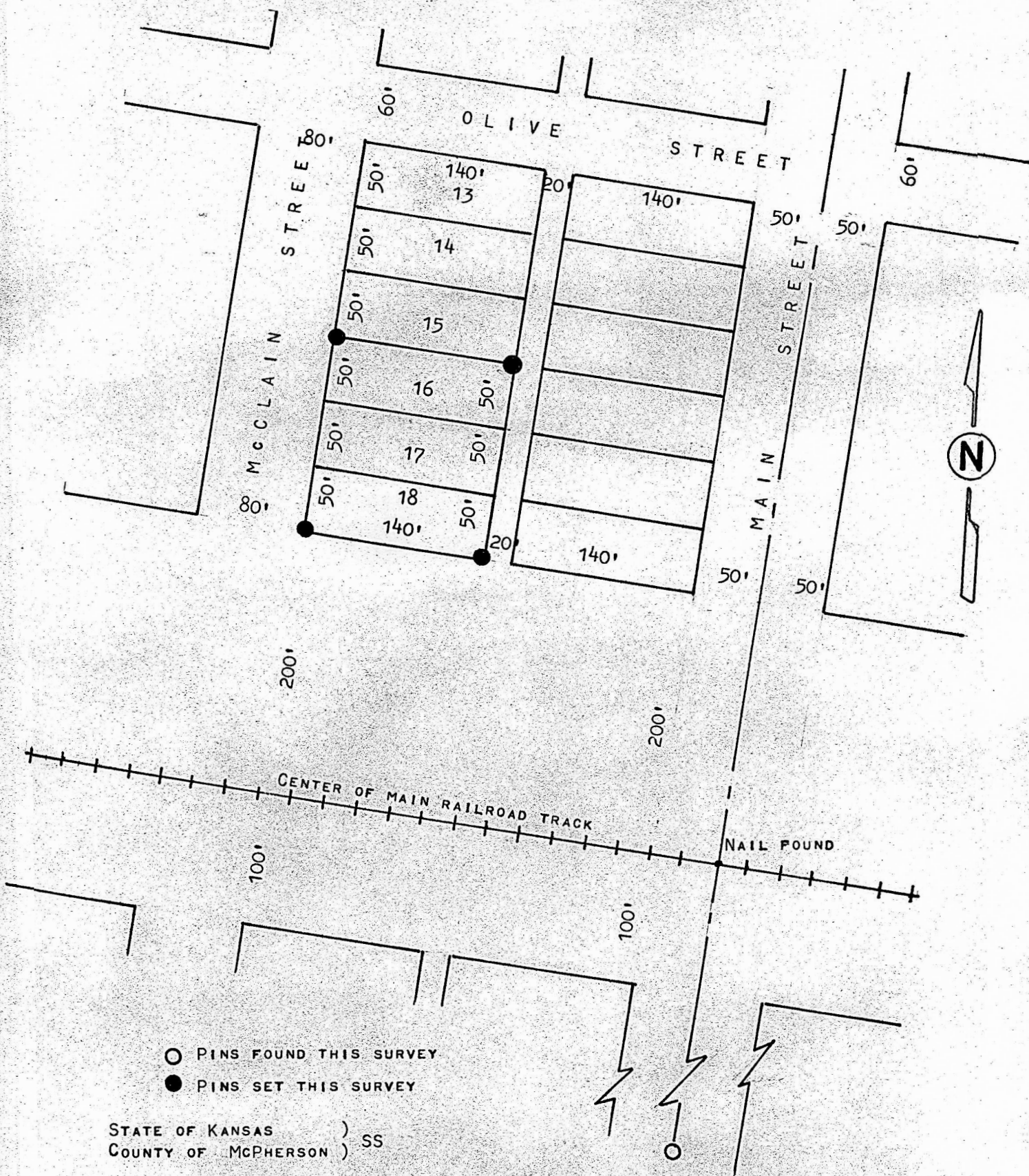


A SURVEY OF LOTS 16, 17, & 18, BLOCK 3

WINDOM, KANSAS



I, MELVIN FERGUSON, PROFESSIONAL ENGINEER OF THE STATE OF KANSAS DO HEREBY CERTIFY THAT UNDER MY SUPERVISION A SURVEY WAS MADE OF LOTS 16, 17, AND 18, BLOCK 3, TO THE CITY OF WINDOM, KANSAS, AND THE ABOVE PLAT IS A TRUE EXHIBIT OF SAID SURVEY AS FAR AS IT IS KNOWN TO ME.

SURVEY CALLED FOR BY SHIRLEY CRANE  
SIGNED THIS 4<sup>th</sup> DAY OF APRIL, 1978

MELVIN FERGUSON  
PROFESSIONAL ENGINEER  
KANSAS

