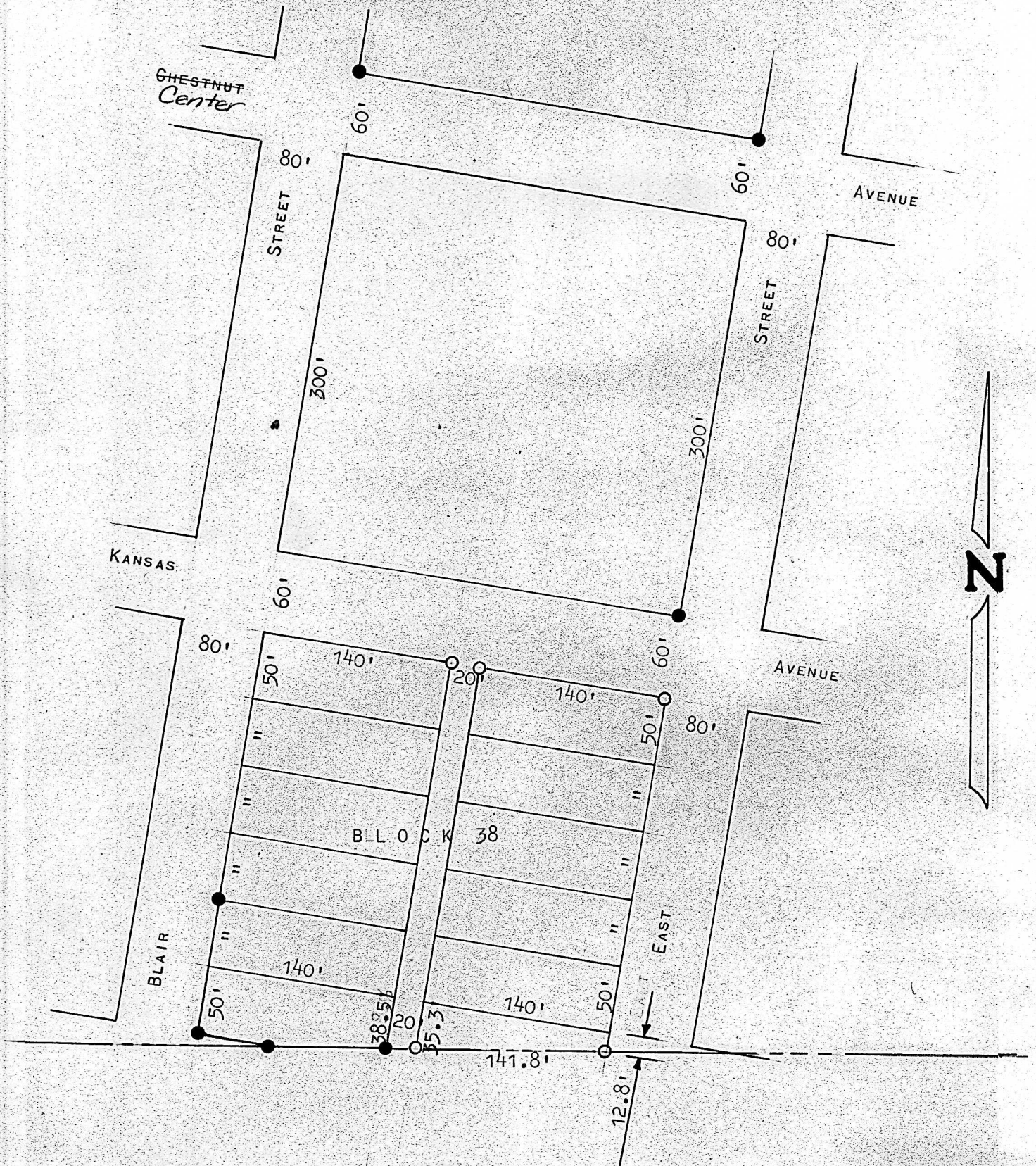


SURVEY E1/2 BLOCK 38
ORIGINAL TOWN
WINDOM, KANSAS



- PINS SET PREVIOUS SURVEY
- PINS SET THIS SURVEY

STATE OF KANSAS)
COUNTY OF McPHERSON) ss

I, FRANCIS RANKIN, COUNTY ENGINEER OF McPHERSON, KANSAS, DO HEREBY CERTIFY THAT UNDER MY SUPERVISION A SURVEY WAS MADE OF THE E1/2 BLOCK 38, ORIGINAL TOWN TO THE CITY OF WINDOM, KANSAS AND THE ABOVE PLAT IS A TRUE EXHIBIT OF SAID SURVEY AS FAR AS IT IS KNOWN TO ME.

SURVEY CALLED FOR BY V. O. ELLWOOD

SIGNED THIS 14 DAY OF JUNE, 1967.

Francis Rankin
FRANCIS RANKIN
COUNTY ENGINEER
McPHERSON, KANSAS

