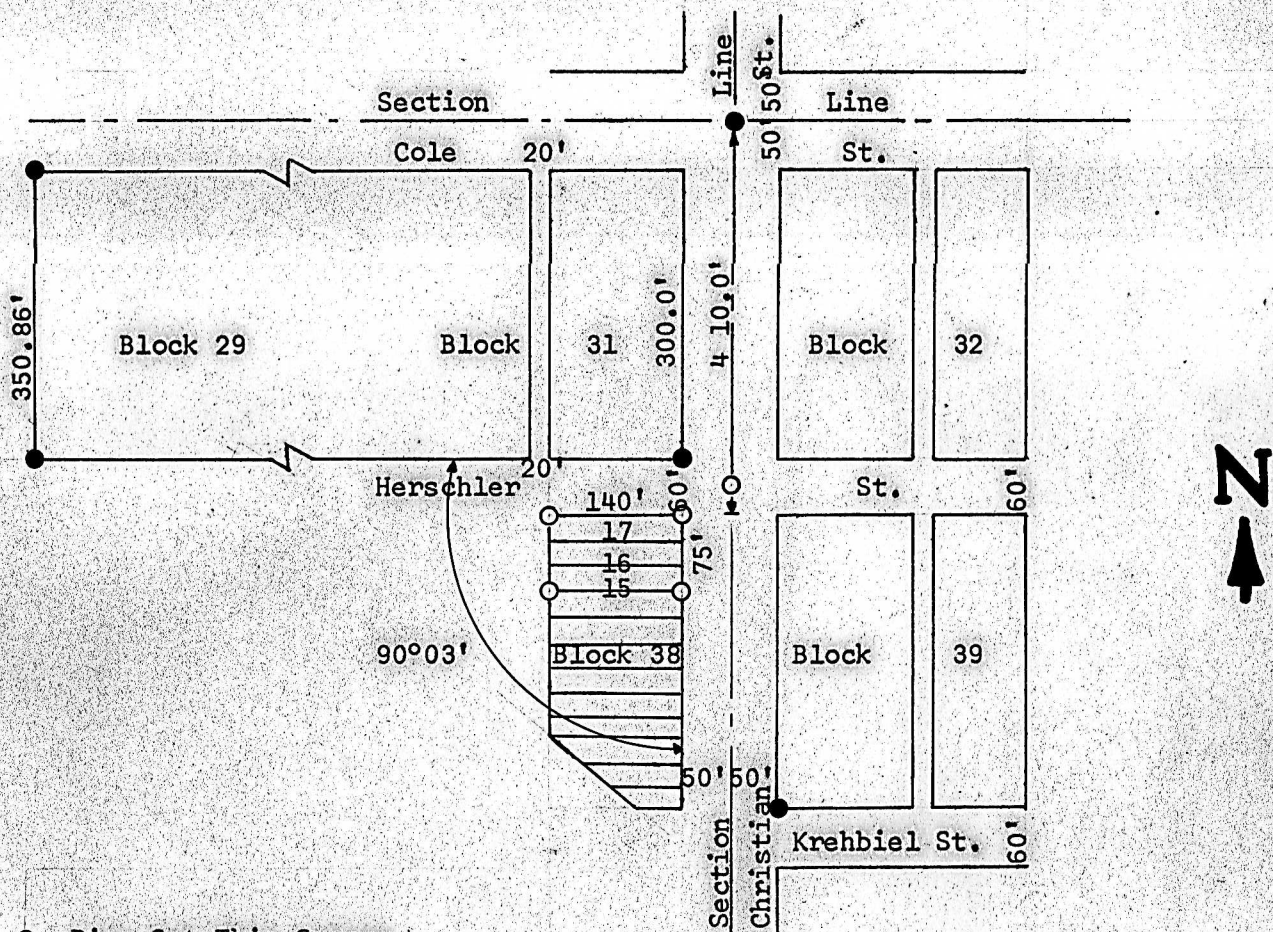


A SURVEY OF LOTS 15, 16 & 17
BLOCK 38, ORIGINAL TOWN
CITY OF MOUNDRIDGE, KANSAS



- Pins Set This Survey
- Pins Found This Survey

State of Kansas)
County of McPherson) SS

I, Francis Rankin, County Engineer of McPherson County, Kansas, do hereby certify that under my supervision a survey was made of Lots 15, 16 & 17, Block 38, Original Town to the City of Moundridge, Kansas and the above plat is a true exhibit of said survey as far as it is known to me.

Survey called for by Joan Goering
Signed this 7 day of April 1966

F. R. Rankin
F. R. Rankin
County Engineer
McPherson, Kansas



Field Notes in Range 2 Book 1 Pages 85 & 86