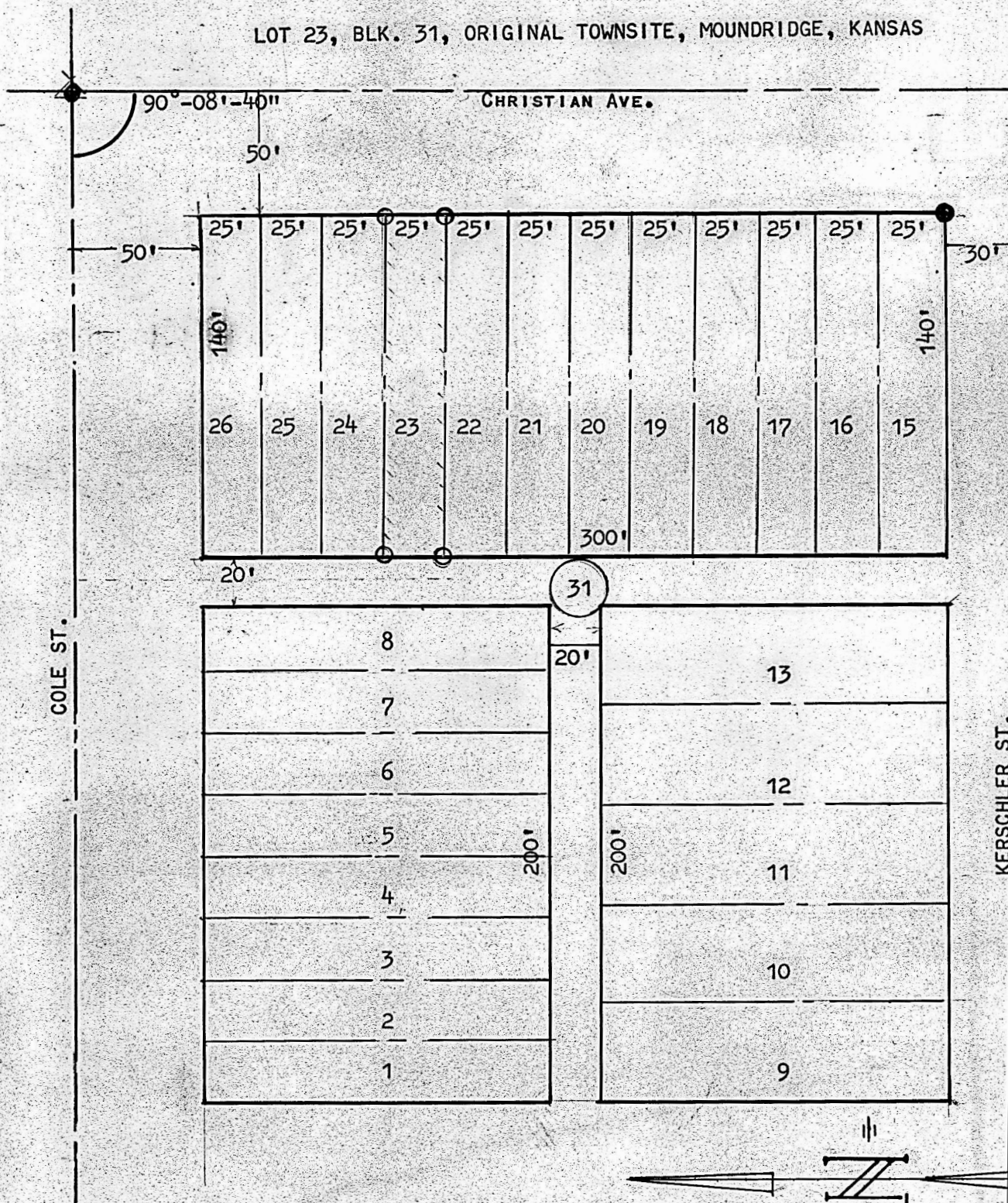


LOT 23, BLK. 31, ORIGINAL TOWNSITE, MOUNDRIDGE, KANSAS



FOUND
SET



SCALE 1" = 60'

I, FRANCIS R. RANKIN LICENSED PROFESSIONAL ENGINEER IN THE STATE OF KANSAS HEREBY CERTIFY THE ABOVE SURVEY WAS MADE UNDER MY SUPERVISION AND THAT THE PLAT AS SHOWN IS TRUE AND CORRECT SO FAR AS IT IS KNOWN TO ME. SAID CORNERS OF LOT 23, BLOCK 31 WERE ESTABLISHED AS FOLLOWS: FOUND SECTION CORNER AT INTERSECTIONS OF STREET'S AT NE CORNER OF BLOCK 31. FOUND ANGLE TO BE 90°-08'-40" AS SHOWN ON THIS PLAT MEASURED WEST ALONG E OF COLE AVE. TO E NORTH SOUTH ALLEY IN BLOCK 31; THENCE SOUTH ON E OF ALLEY AT ANGLE SHOWN. SET INSTRUMENT ON SOUTH LINE OF LOT 23 TURNED ANGLES AND SET SOUTH PINS ON LOT 23, SET NORTH PINS SAME.

SIGNED THIS 30TH DAY OF APRIL 1962 AT McPHERSON, KANSAS

Francis R. Rankin
FRANCIS RANKIN
ENGINEER AND SURVEYOR
799
KANSAS
PROFESSIONAL ENGINEER

Mr. Vide Johnson
512 SOUTH MAIN ST.
HUTCHINSON, KANSAS

MICROFILM