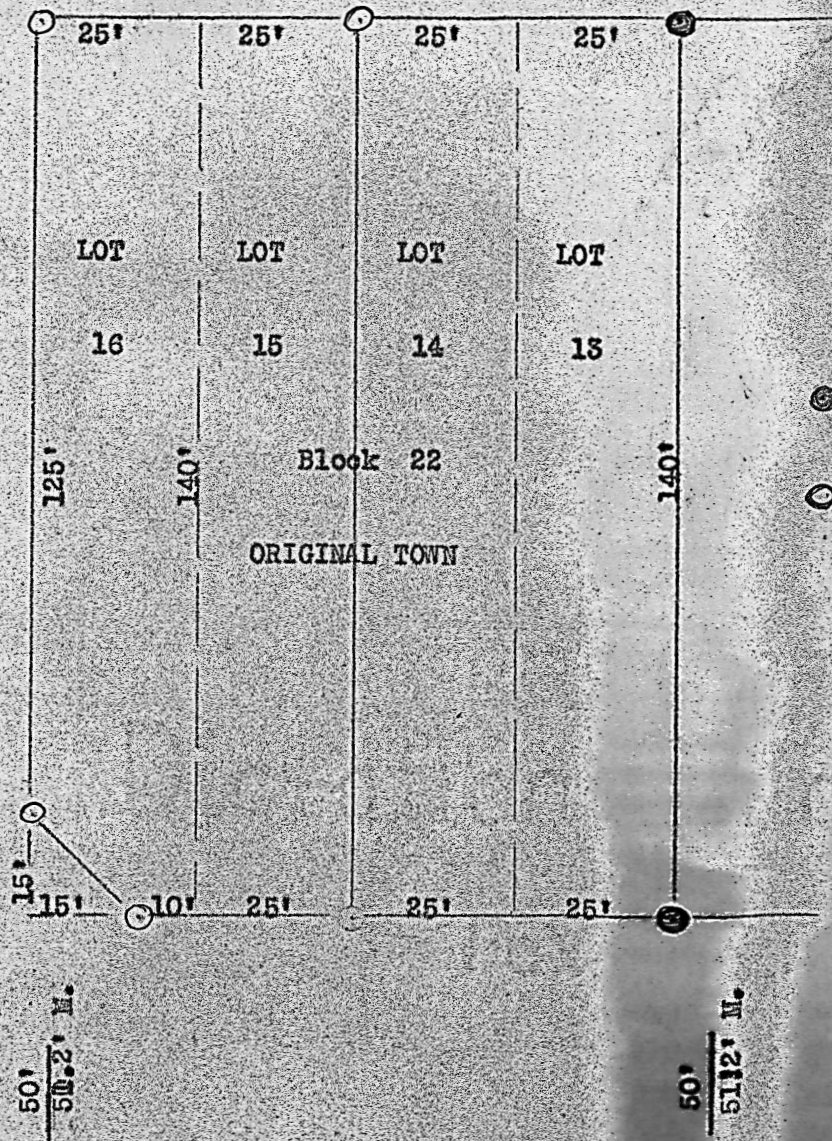


FILE

WALT GEDDARD

May 8th, 1952



Section Line Between 22 & 27, T.21 S., R.2 W

State of Kansas, County of McPherson, ss

I, Francis D. Wagner, County Engineer of McPherson County, Kansas, do hereby certify that I did on the 8th day of May, 1952, survey and stake Lot 15 & 16 Block 22 Original Town site of Moundridge, Kansas and the accompanying plat is a true exhibit of said survey.

Francis D. Wagner
Francis D. Wagner

MICROFILM