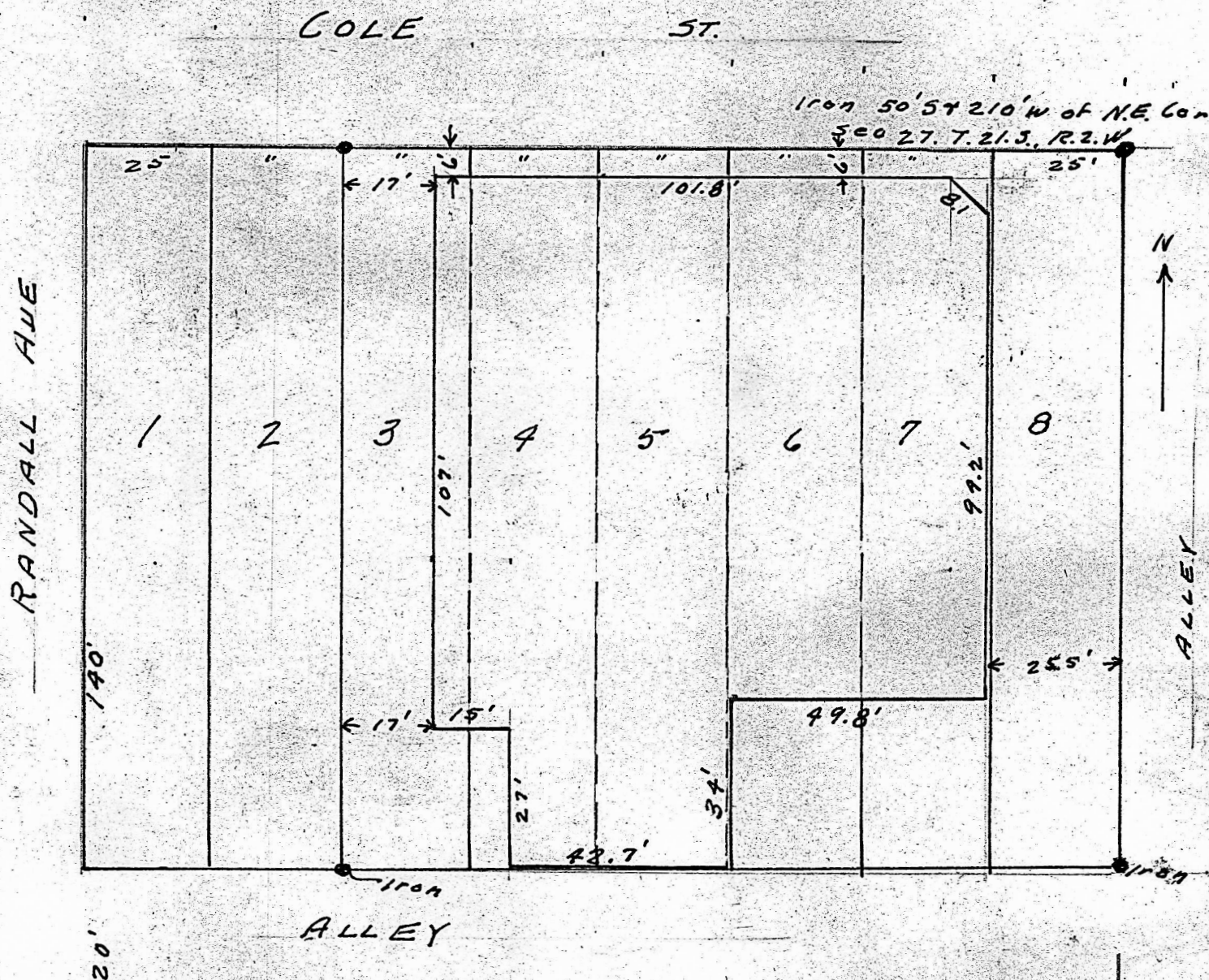


Lots 3, 4, 5, 6, 7, 8, Block 31, Original Town, Moundridge, Kansas.



State of Kansas, County of McPherson, ss.

I, G.D.Johnson, Licensed Civil Engineer of the State of Kansas and Deputy County Surveyor of McPherson County, Kansas, do hereby certify that I did on the 19th. day of August, 1954 survey Lots 3, 4, 5, 6, 7, & 8, Block 31. Original Town of Moundridge , Kansas and that accompanying plat is a true exhibit of said survey.

E. W. Johnson

MICROFILM