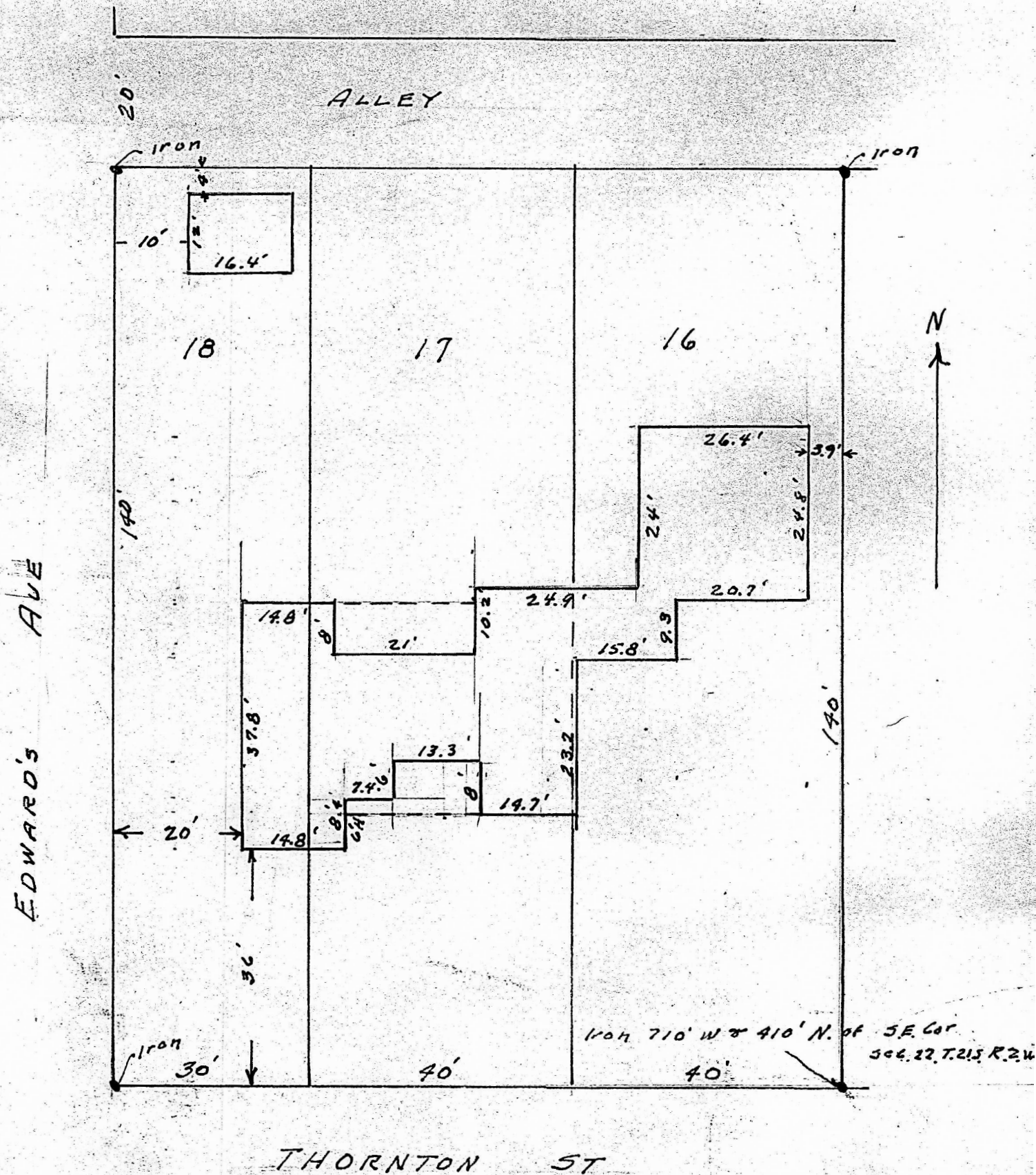


16-17-18 13/16 07

Lots 16, 17, & 18, Block 16, Original Town, Moundridge, Kansas



State of Kansas, County of McPherson, ss,

I, G.D. Johnson, Licensed Civil Engineer of the State of Kansas, do hereby certify that I did on the 19th. day of August, 1954 survey lots 16, 17, & 18, Block 16, Original Town of Moundridge, Kansas, and that accompanying plat is a true exhibit of said survey.

G.D. Johnson