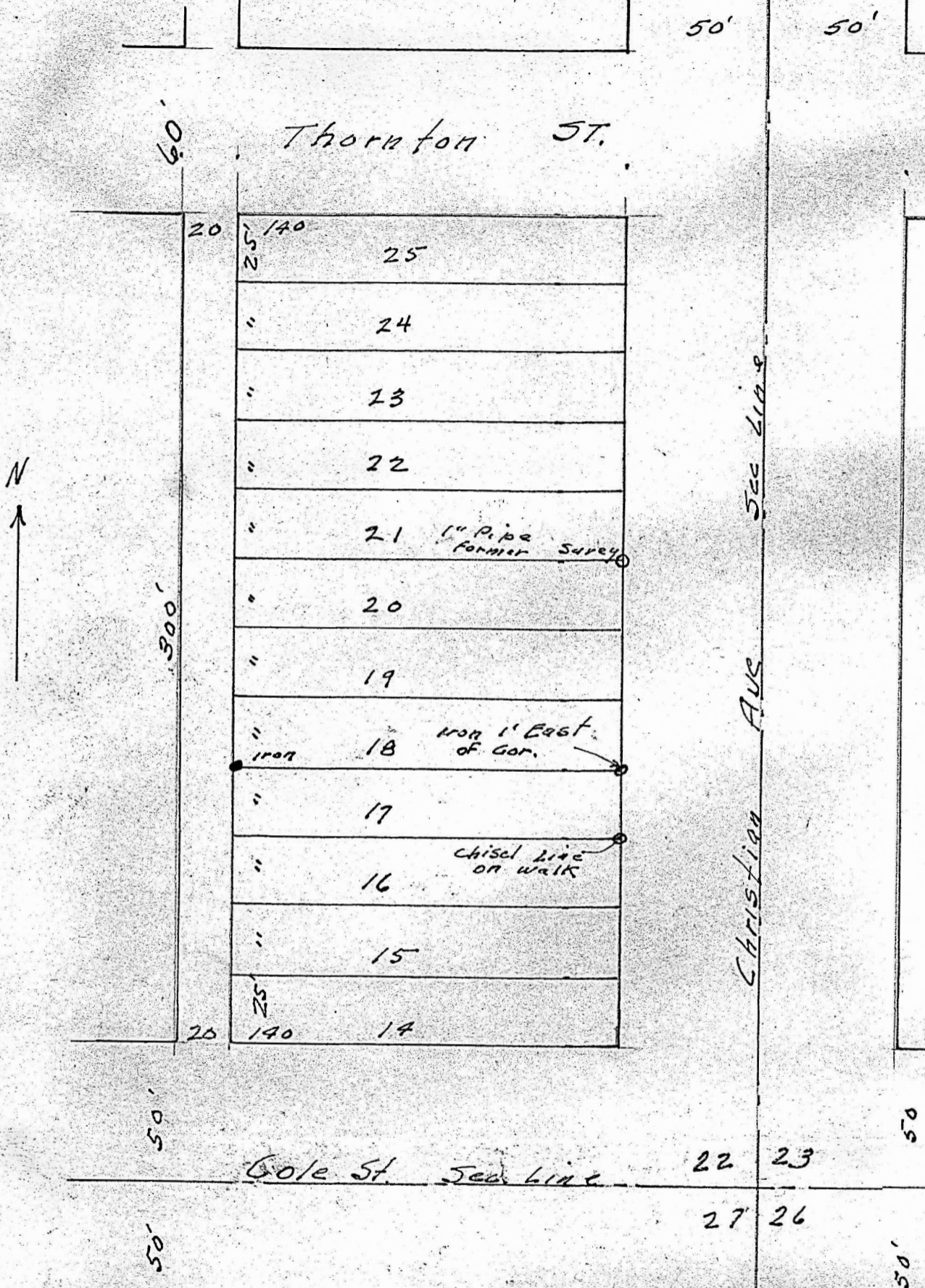


Part of Block 24. Original Town Moundridge, Kansas.



State of Kansas, County of McPherson, ss.

I, G.D. Johnson, Licensed Civil Engineer of the State of Kansas and Deputy County Surveyor of McPherson County, Kansas, do hereby certify that I did on the 27th. day of September, 1954 survey Lot 17, Block 24, Original Town of Moundridge, Kansas and that accompanying plat is a true exhibit of said survey.

*G.D. Johnson*

MICROFILM