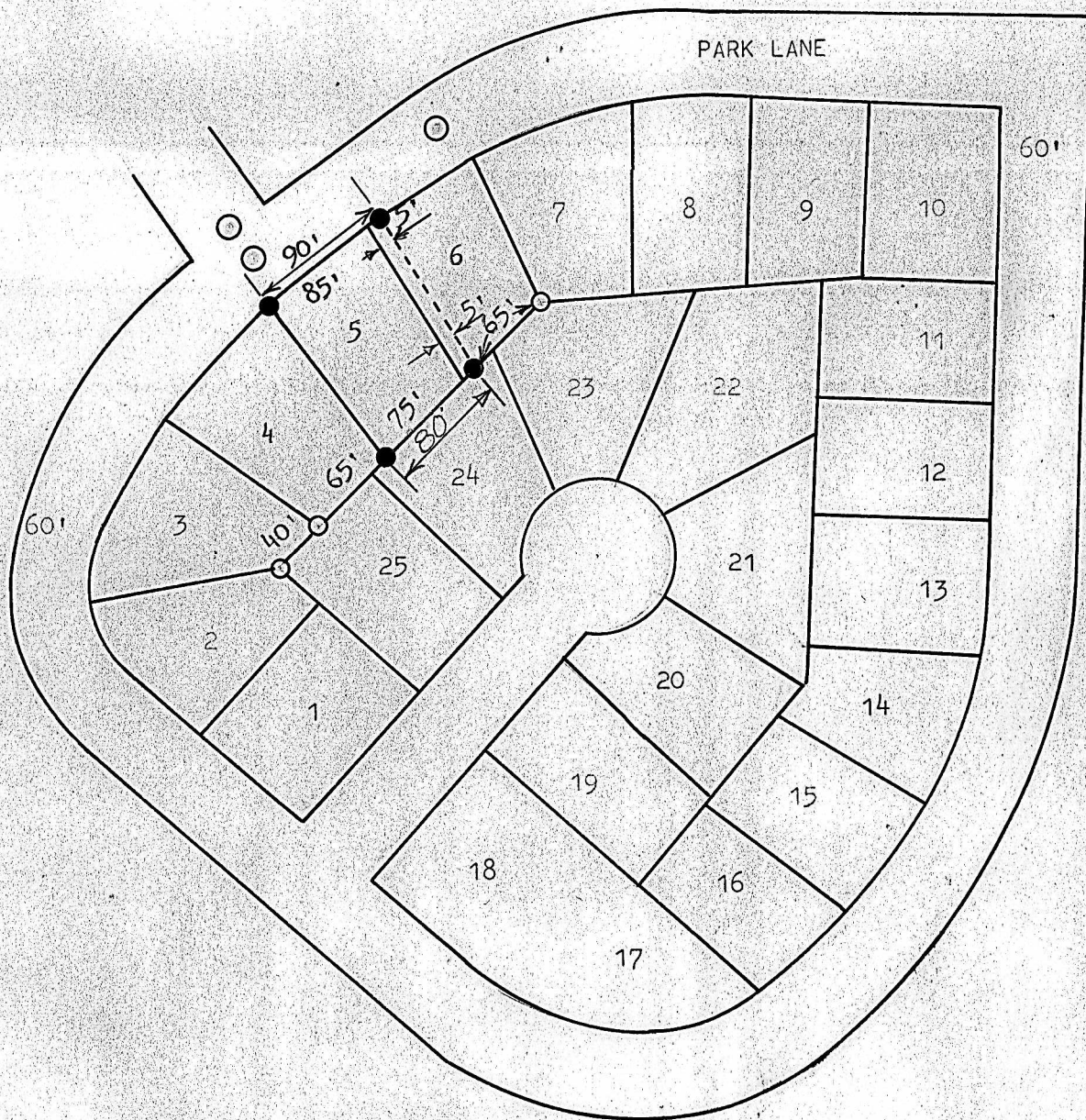


A SURVEY OF LOTS 5 AND SOUTH 5' OF LOT 6
PARK PLACE ADDITION, MOUNDRIDGE, KANSAS



○ PINS FOUND THIS SURVEY

● PINS SET THIS SURVEY

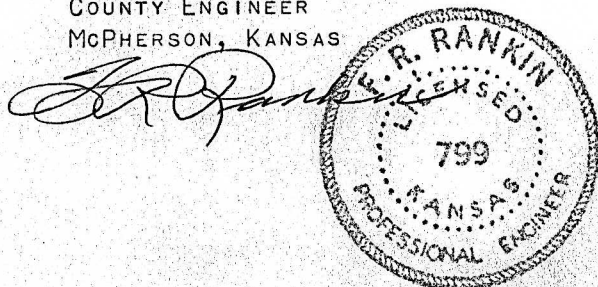
STATE OF KANSAS)
COUNTY OF MCPHERSON) SS

I, FRANCIS RANKIN, COUNTY ENGINEER OF MCPHERSON COUNTY, KANSAS
DO HEREBY CERTIFY THAT UNDER MY SUPERVISION A SURVEY WAS MADE OF
LOT 5 AND THE SOUTH 5 FEET OF LOT 6, BLOCK 1, TO THE CITY OF MOUNDRIDGE
KANSAS AND THE ABOVE PLAT IS A TRUE EXHIBIT OF SAID SURVEY AS FAR AS IT
IS KNOWN TO ME.

SURVEY CALLED FOR BY WILBUR VOTH

SIGNED THIS 3 DAY OF OCTOBER, 1967

FRANCIS RANKIN
COUNTY ENGINEER
MCPHERSON, KANSAS



MICROFILM