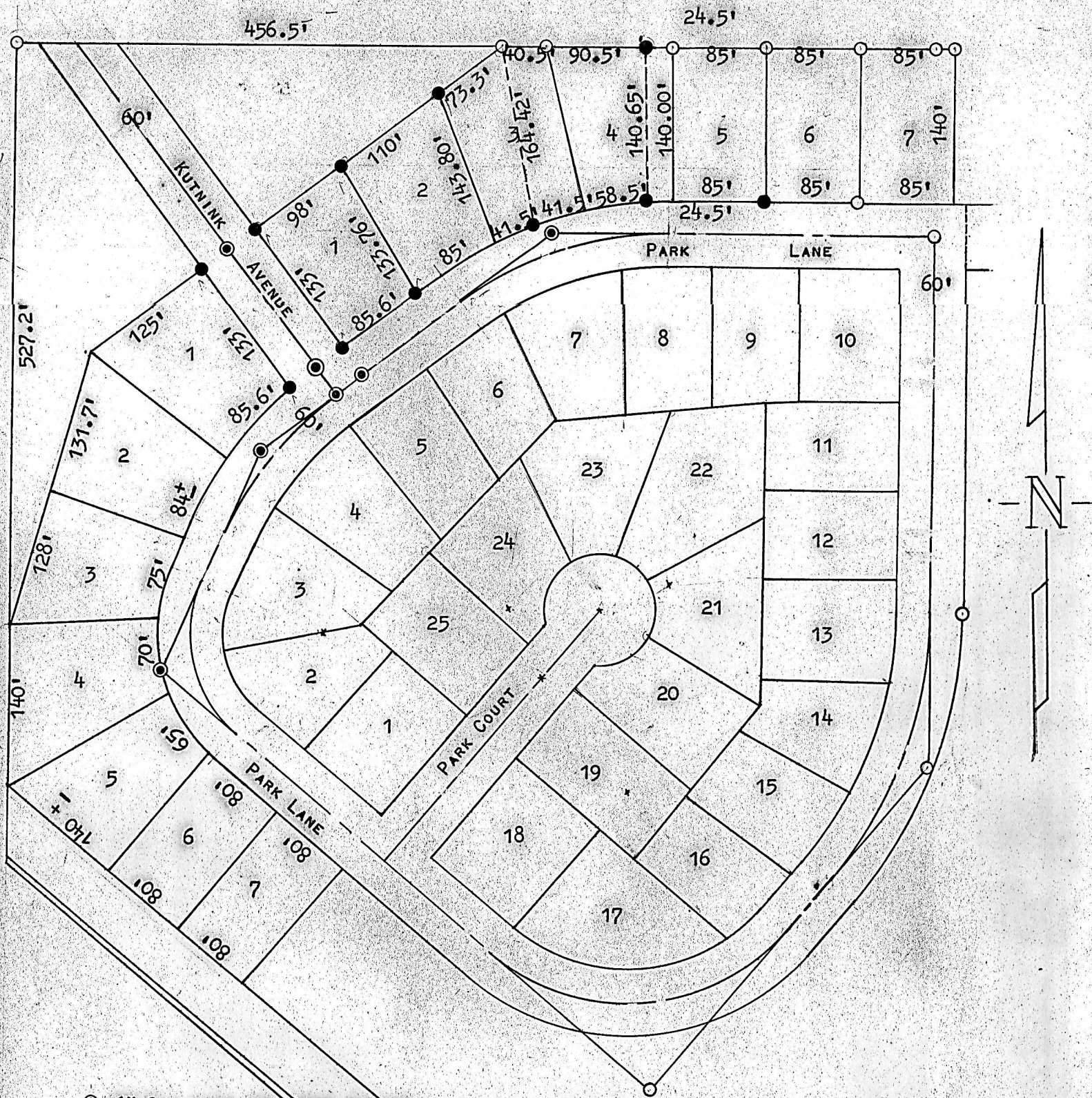


A SURVEY OF LOTS 1, 2, 3, 4 & 5 BLOCK 2
PARK PLACE ADDITION, MOUNDRIDGE, KANSAS



- 1" GAS PIPE SET THIS SURVEY.
- 3/4" GAS PIPE SET THIS SURVEY.
- PINS FOUND THIS SURVEY.

STATE OF KANSAS) SS
COUNTY OF McPHERSON)

I, FRANCIS D. WAGNER, COUNTY ENGINEER OF McPHERSON COUNTY, KANSAS DID CAUSE TO BE DONE ON THE 3RD DAY OF OCTOBER, 1961, A SURVEY OF LOTS 1, 2 PART OF 3 AND 4, AND LOT 5 BLOCK 2 PARK PLACE ADDITION TO THE CITY OF MOUNDRIDGE, COUNTY OF McPHERSON, KANSAS, AND THAT THE ACCOMPANYING PLAT IS A TRUE EXHIBIT OF SAID SURVEY.

Francis D. Wagner

FRANCIS D. WAGNER
COUNTY ENGINEER
McPHERSON COUNTY



OCTOBER 4, 1961

MICROFILM