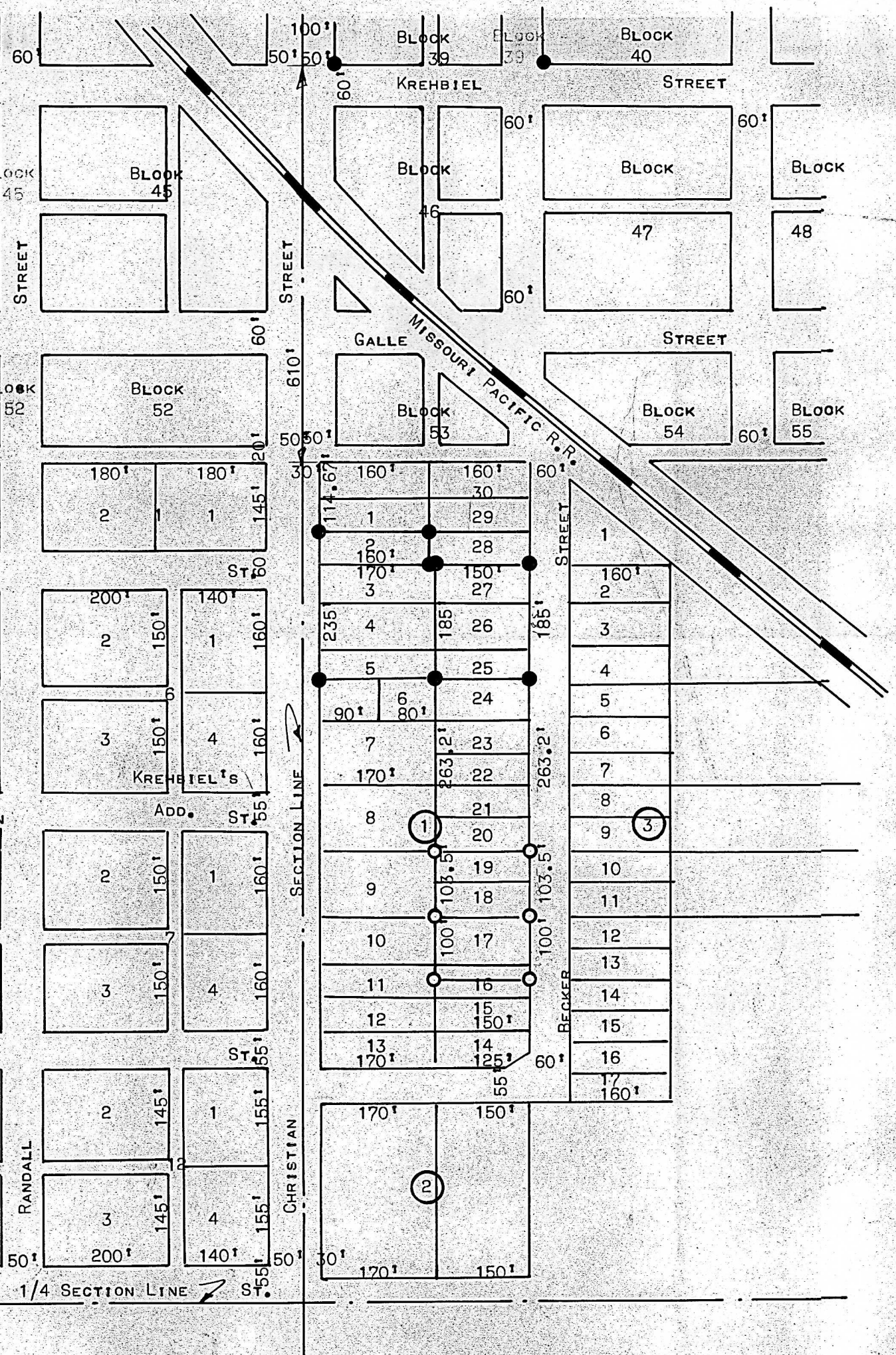


A SURVEY OF NORTH-HALF OF LOT 16 AND ALL OF LOTS
17-18 & 19 BLOCK 1 BECKER'S SUBDIVISION CITY OF
MOUNDRIDGE



SO ON THIS SURVEY

S ON PREVIOUS SURVEY

STATE OF KANSAS) S⁵
COUNTY OF McPHERSON)

FRANCIS D. WAGNER, COUNTY ENGINEER OF McPHERSON COUNTY, KANSAS, DID CAUSE TO
DONE ON THE 18TH DAY OF MAY, 1956, A SURVEY OF NORTH-HALF OF LOT 16 AND ALL
LOTS 17-18 AND 19 BLOCK 1 BECKER'S SUBDIVISION CITY OF MOUNDRIDGE, COUNTY OF
McPHERSON, KANSAS AND THAT THE ACCOMPANYING PLAT IS A TRUE EXHIBIT OF SAID SURVEY.

Francis D. Wagner

FRANCIS D. WAGNER
COUNTY ENGINEER