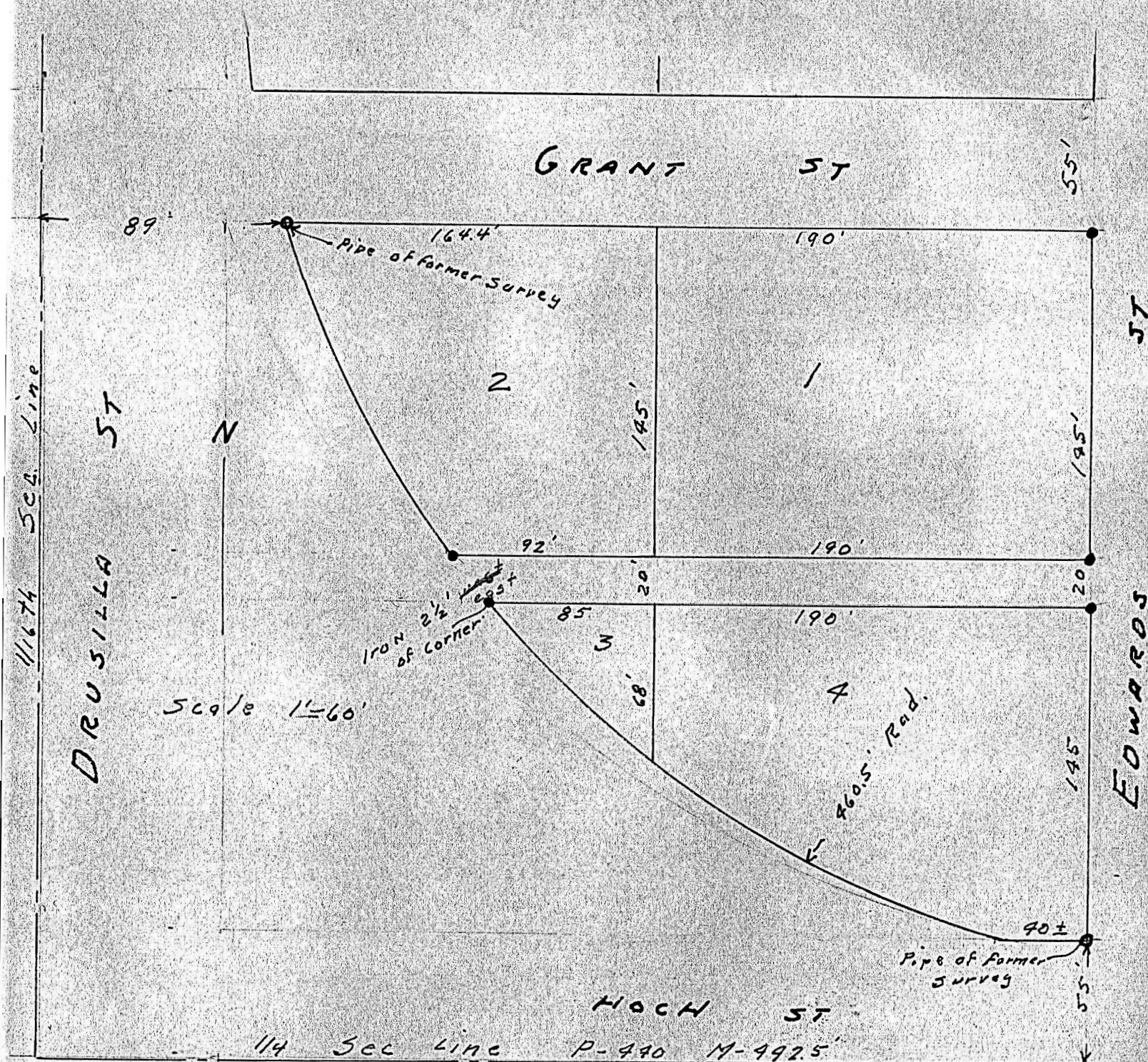


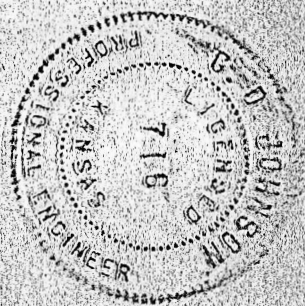
BLOCK 10, Krehbiels First Addition, Moundridge, Kansas.



State of Kansas, County of McPherson, SS.

I, G.D. Johnson, Licensed Civil Engineer of the State of Kansas, do hereby certify that I did on the 27th. day of November, 1957 survey Block 10, Krehbiels First Addition to the City of Moundridge, Kansas and that accompanying plat is a true exhibit of said survey.

*G.D. Johnson*



MICROFILM

Note  
Measurement from 1/4 sec line did not agree with City  
street and from surveys. Final measurements were made  
plotted distances south from street measurement which have