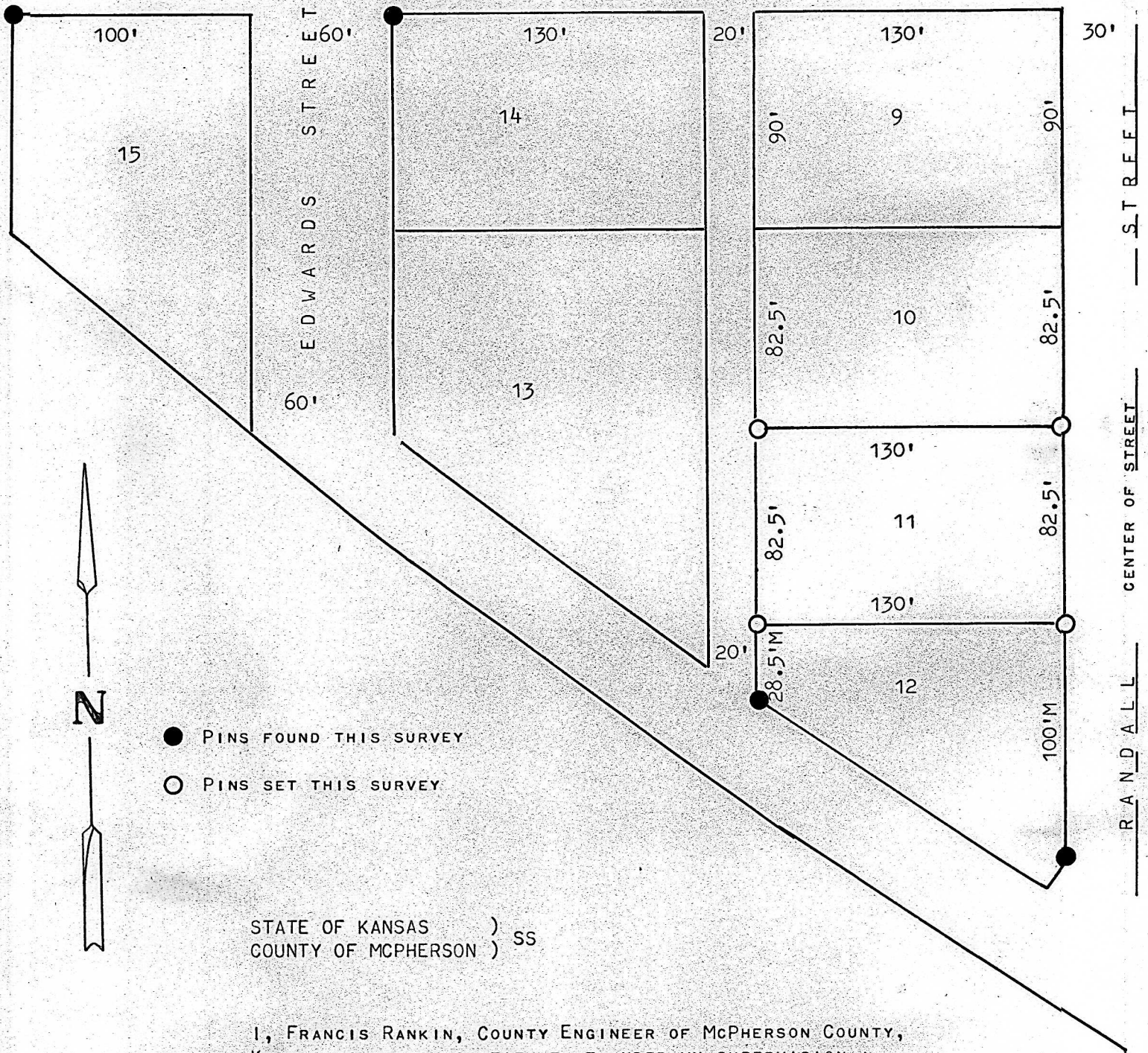


$$\text{H O C H}$$

S T R E E T



STATE OF KANSAS)
COUNTY OF MCPHERSON) SS

I, FRANCIS RANKIN, COUNTY ENGINEER OF McPHERSON COUNTY, KANSAS DO HEREBY CERTIFY THAT UNDER MY SUPERVISION A SURVEY WAS MADE OF LOT 11, HERB J. KREHBIEL'S ADDITION TO THE CITY OF MOUNDRIE, KANSAS, AND THAT THE ACCOMPANYING PLAT IS A TRUE EXHIBIT OF SAID SURVEY AS FAR AS IT IS KNOWN TO ME.

SURVEY CALLED FOR BY ^{Kuehn}~~KING~~ CONSTRUCTION CO. FOR ERNEST J. KREHBIEL

SIGNED THIS 6 DAY OF SEPTEMBER, 1968

Francis Rankin
FRANCIS RANKIN
COUNTY ENGINEER
MCPHERSON, KANSAS



MICROFILM