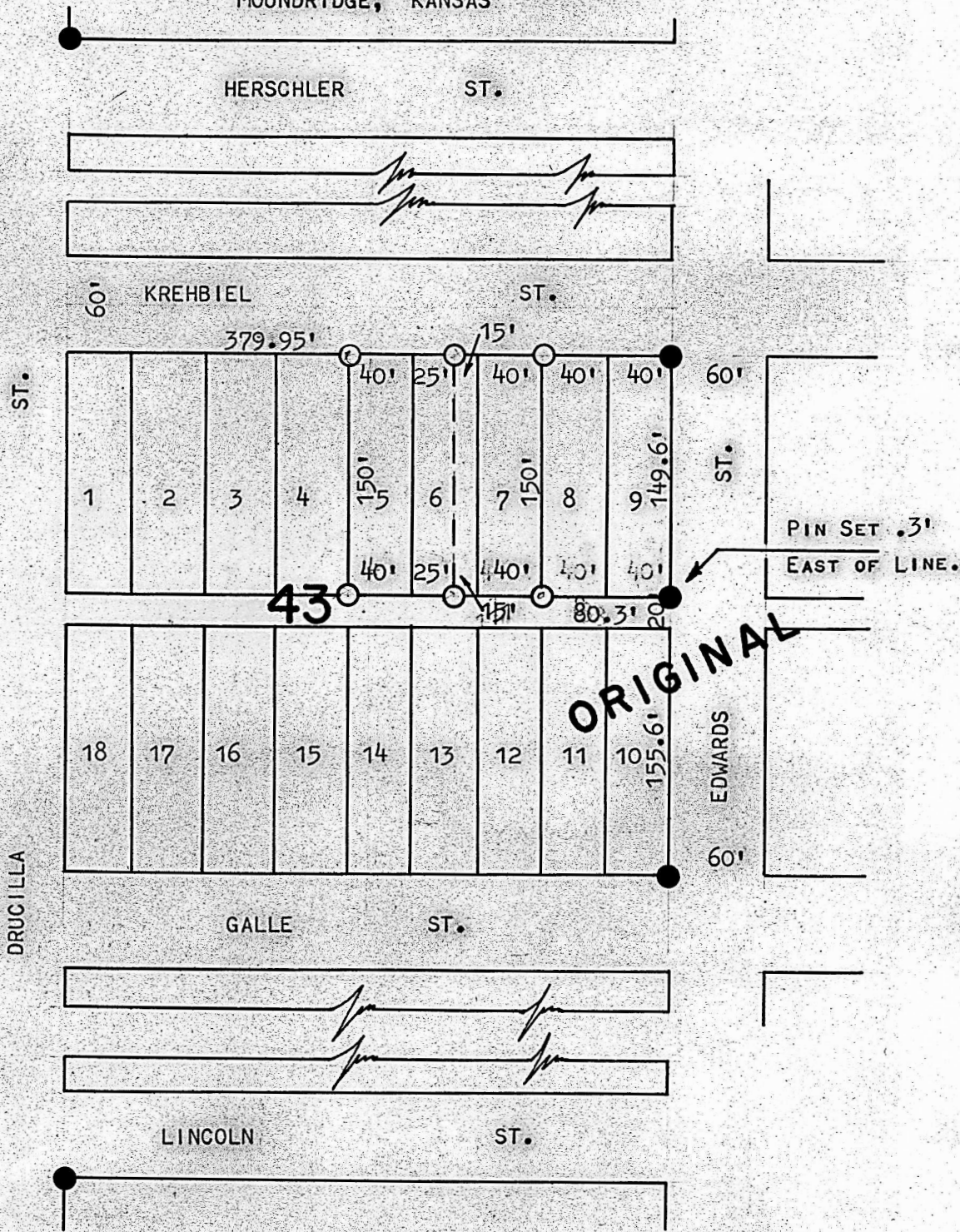


A SURVEY OF A PORTION OF
BLOCK 43 ORIGINAL TOWN
MOUNDRIE, KANSAS



- PINS SET PREVIOUS SURVEY.
○ PINS SET THIS SURVEY.

STATE OF KANSAS)) S.S.
COUNTY OF McPHERSON)

I, FRANCIS R. RANKIN PROFESSIONAL ENGINEER OF THE STATE OF KANSAS, DO HEREBY CERTIFY THE ABOVE SURVEY WAS MADE UNDER MY SUPERVISION, AND THE ABOVE PLAT IS TRUE AND CORRECT SO FAR AS IT IS KNOWN TO ME, THAT ALL DIMENSIONS ARE CORRECT AS SHOWN ON THE PLAT.

SIGNED THIS 7 DAY OF Nov. 1963



MICROFILM