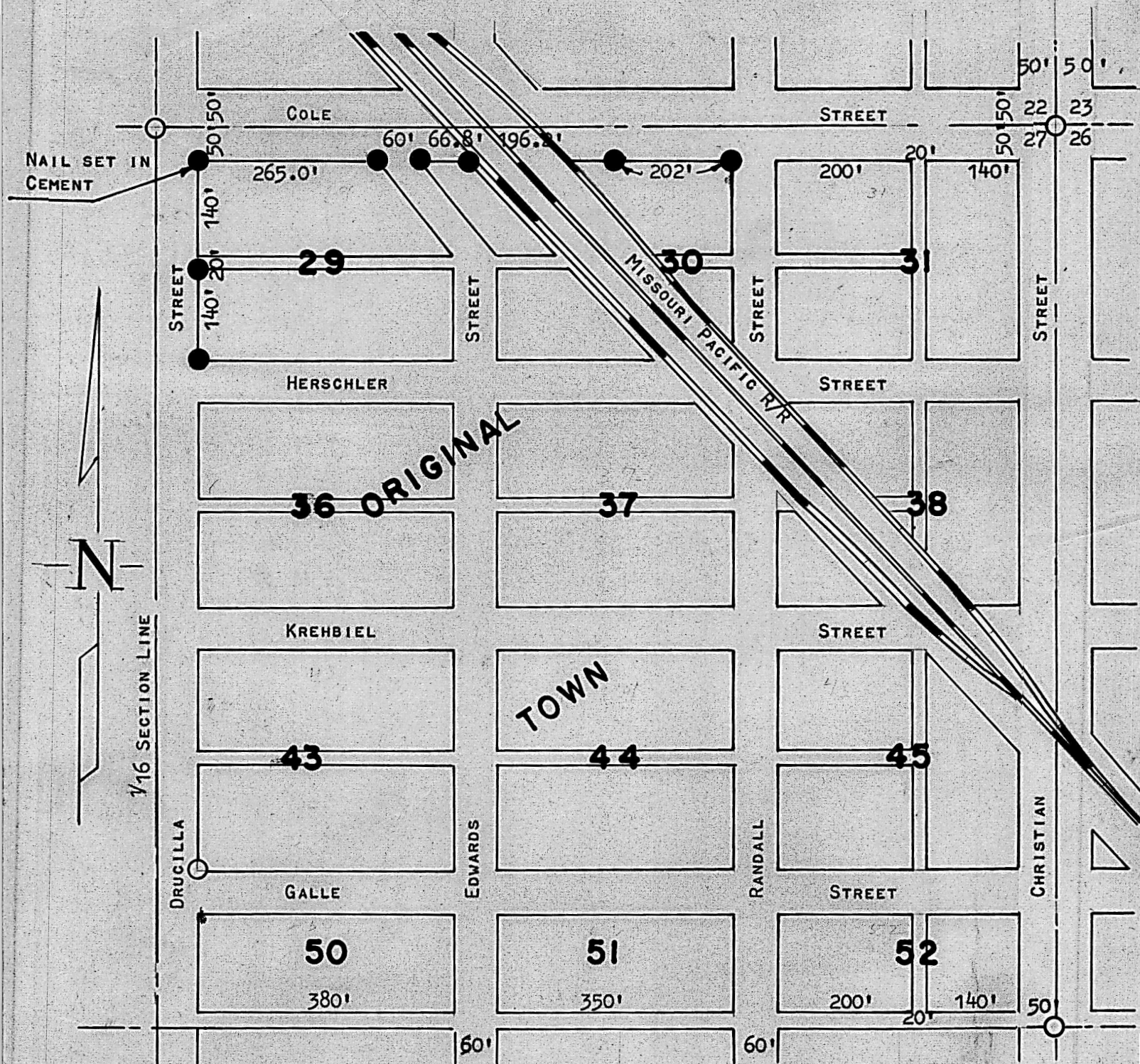


A SURVEY OF A PORTION OF
BLOCKS 29 & 30 ORIGINAL TOWN
MOUNDRIDGE, KANSAS



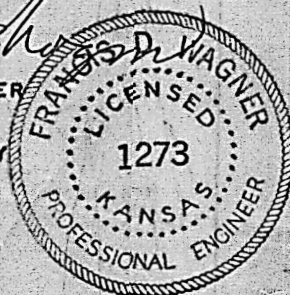
- PINS FOUND THIS SURVEY.
● 3/4" PIPE SET THIS SURVEY.

STATE OF KANSAS) SS
COUNTY OF McPHERSON)

I, FRANCIS D. WAGNER, COUNTY ENGINEER OF McPHERSON COUNTY, KANSAS DO HEREBY CERTIFY THAT I DID CAUSE TO BE DONE ON THE 14TH DAY OF AUGUST, 1961, A SURVEY TO ESTABLISH THE NORTH BLOCK CORNERS OF BLOCKS 29 AND 30 AND THE WEST BLOCK CORNERS OF BLOCK 29 ORIGINAL TOWN TO THE CITY OF MOUNDRIDGE, COUNTY OF McPHERSON, KANSAS, AND THAT THE ACCOMPANYING PLAT IS A TRUE EXHIBIT OF SAID SURVEY.

AUGUST 18, 1961

FRANCIS D. WAGNER
COUNTY ENGINEER
McPHERSON COUNTY



City Moundridge