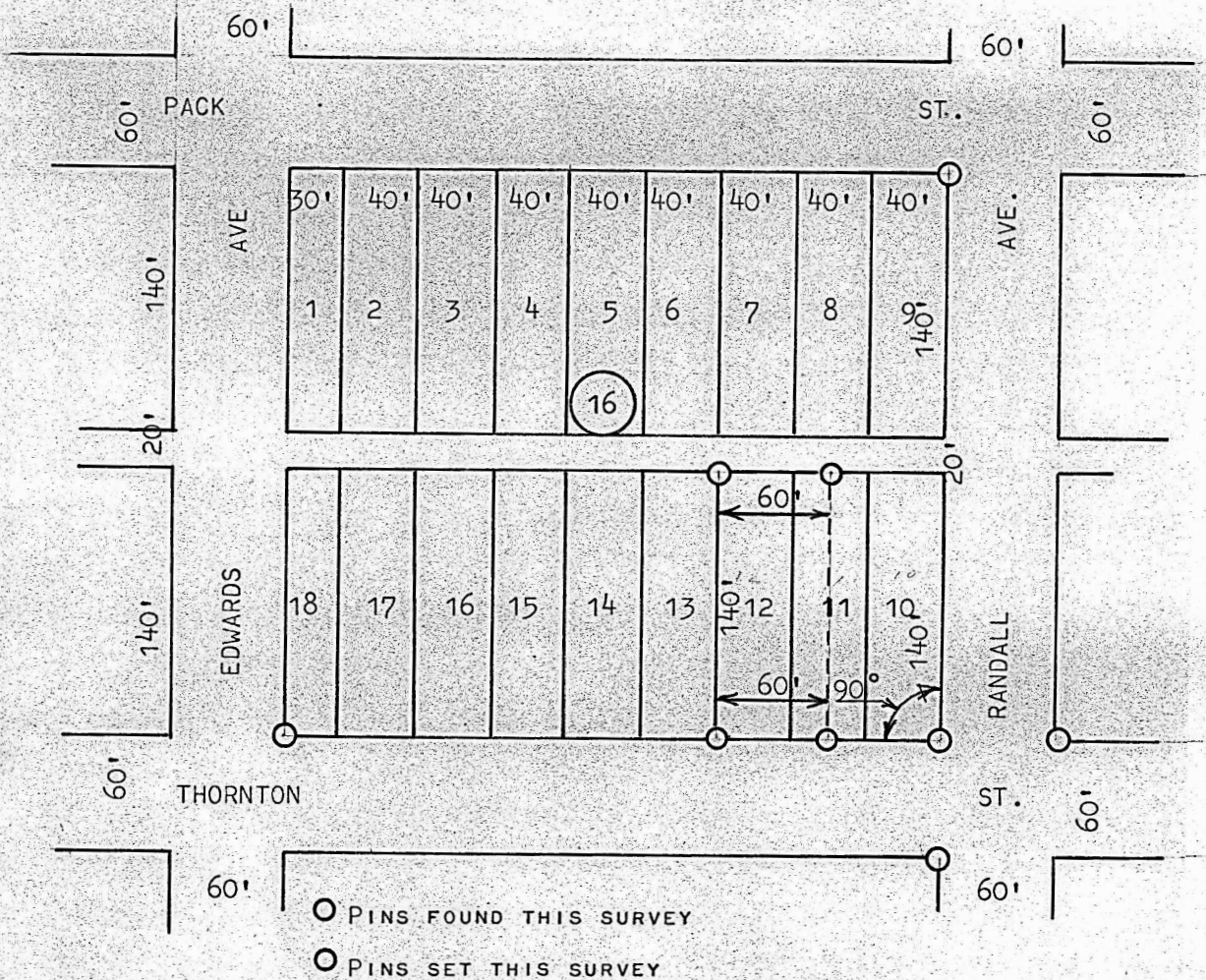


SURVEY OF LOTS 12 AND 1/2 11 BLOCK 16
ORIGINAL TOWN MOUNDRIDGE, KANSAS



STATE OF KANSAS)
COUNTY OF MCPHERSON) SS

I, FRANCIS R. RANKIN, COUNTY ENGINEER OF MCPHERSON COUNTY, KANSAS, DO HEREBY CERTIFY THAT UNDER MY SUPERVISION A SURVEY WAS MADE OF LOTS 12 THE WEST HALF OF 11 OF BLOCK 16, ORIGINAL TOWN TO THE CITY OF MOUNDRIDGE, KANSAS, AND THAT THE ACCOMPANYING PLAT IS A TRUE EXHIBIT OF SAID SURVEY AS FAR AS IT IS KNOWN TO ME.

SIGNED THIS 16 DAY OF JUNE, 1967

SURVEY CALLED FOR BY MRS. KITCHEN

FRANCIS RANKIN
COUNTY ENGINEER
MCPHERSON, KANSAS

F. R. RANKIN
LICENSED
799
PROFESSIONAL

MICROFILM