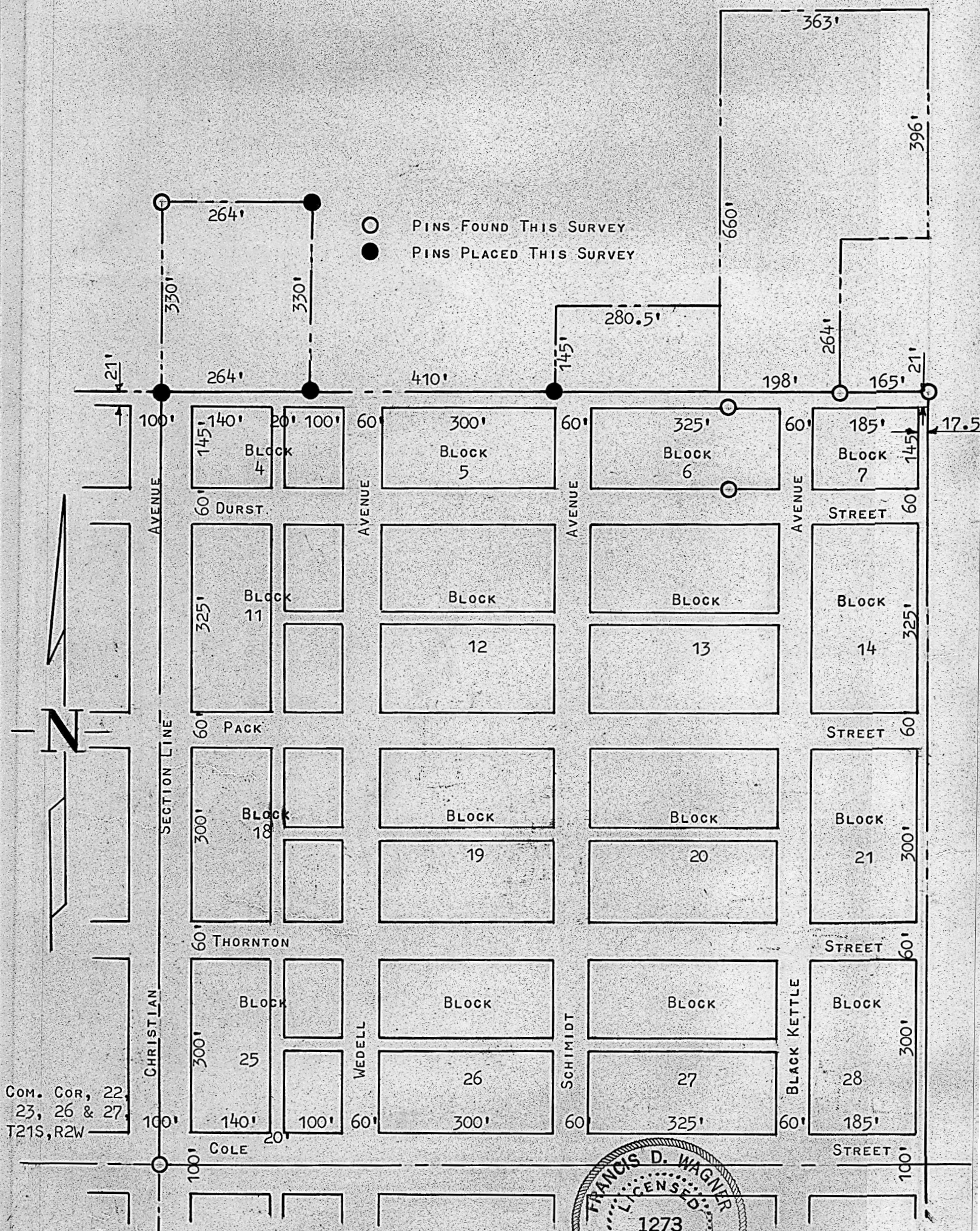


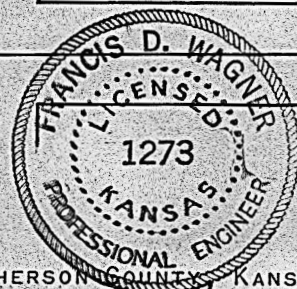
A SURVEY OF PART OF  
THE NORTH CORPORATION LINE  
MOUNDRIDGE, KANSAS



STATE OF KANSAS )  
COUNTY OF McPHERSON ) SS

I, FRANCIS D. WAGNER, COUNTY ENGINEER OF McPHERSON COUNTY, KANSAS, DO HEREBY CERTIFY THAT I DID CAUSE TO BE DONE ON THE 4TH DAY OF JANUARY, 1961, A SURVEY OF PART OF THE NORTH CORPORATION LINE AS SHOWN BY THE PLAT SECTION 23, T21S, R2W OF THE 6TH P.M. AND THAT THE ACCOMPANYING PLAT IS A TRUE EXHIBIT OF SAID SURVEY.

JANUARY 7, 1961



FRANCIS D. WAGNER—COUNTY ENGINEER  
McPHERSON COUNTY