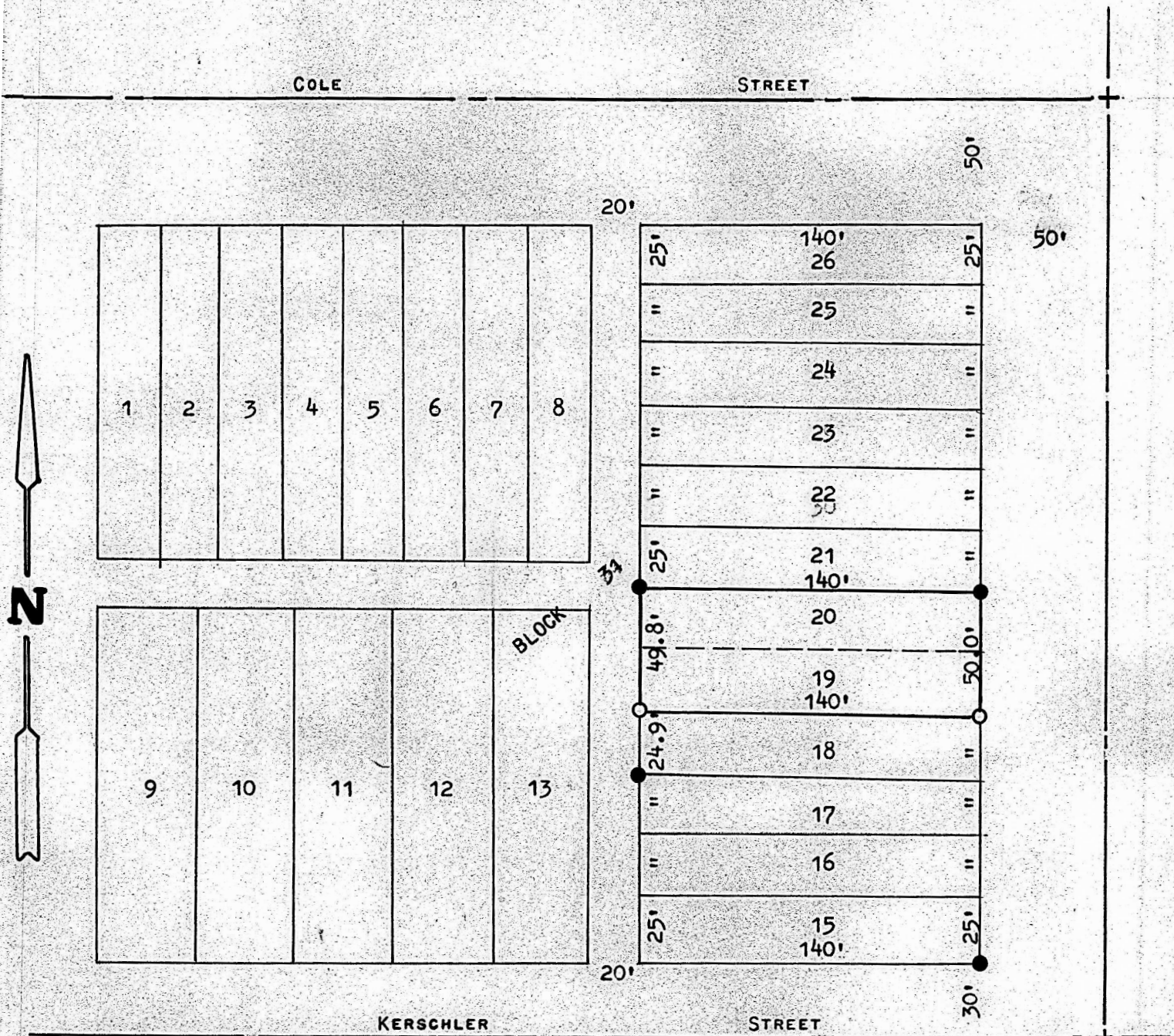


LOTS 19 & 20 BLK. 31, ORIGINAL TOWN  
MOUNDRIDGE, KS.



● PINS FOUND THIS SURVEY

○ PINS SET THIS SURVEY

STATE OF KANSAS )  
COUNTY OF MCPHERSON)SS

I, MELVIN FERGUSON, COUNTY ENGINEER OF MCPHERSON CO., KANSAS, DO  
HEREBY CERTIFY THAT UNDER MY SUPERVISION A SURVEY WAS MADE OF LOTS  
19 & 20, BLOCK 31, ORIGINAL TOWNSITE TO THE CITY OF MOUNDRIDGE, KANSAS  
AND THE ABOVE PLAT IS A TRUE EXHIBIT OF SAID SURVEY AS FAR AS IT IS  
KNOWN TO ME.

SURVEY CALLED FOR BY CARL SKINNER.

SIGNED ON THIS 19<sup>th</sup> DAY OF SEPTEMBER, 1974.

*Melvin Ferguson*  
MELVIN FERGUSON  
COUNTY ENGINEER  
MCPHERSON CO., KANSAS

