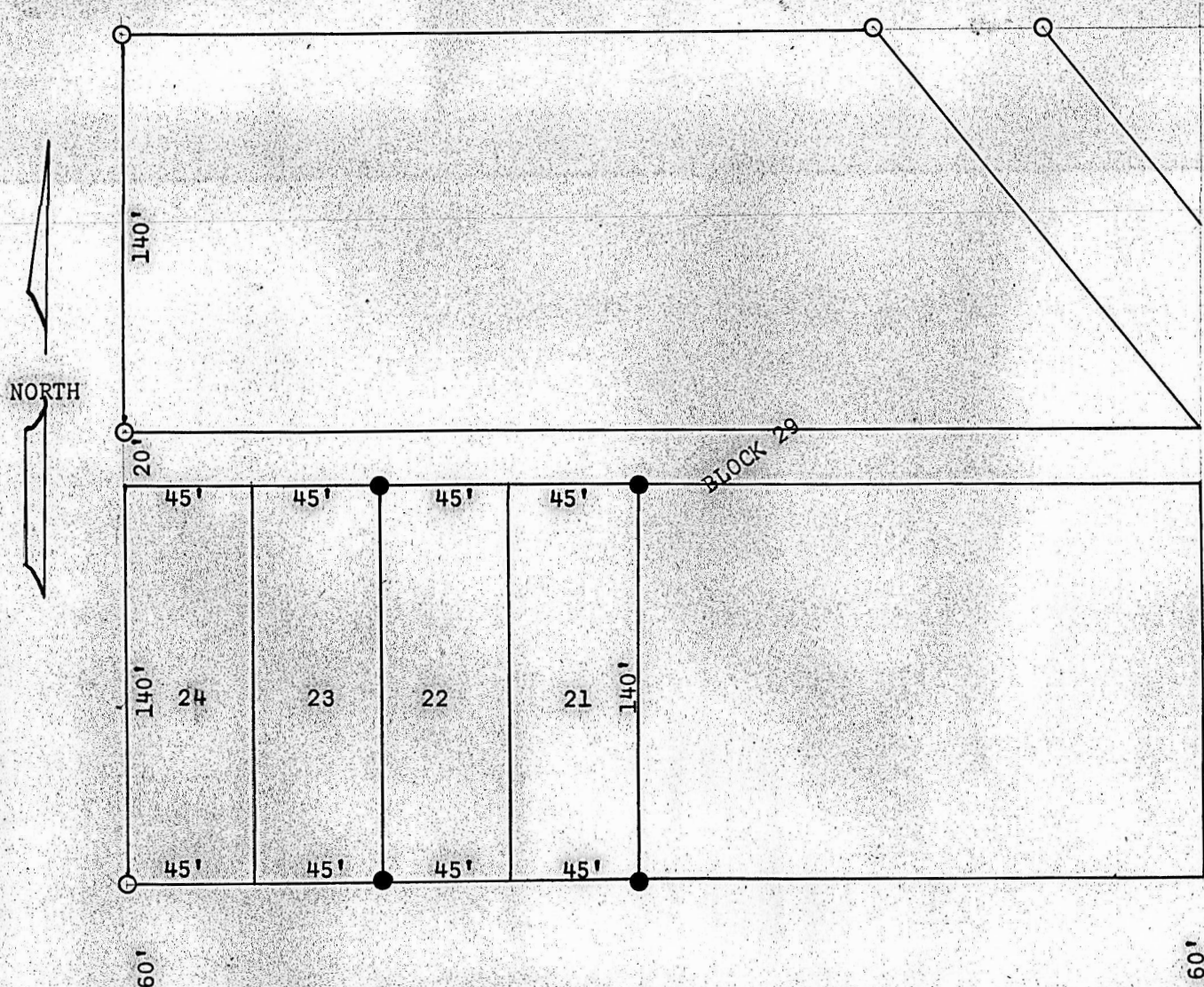


Survey of lots 21 and 22
Block 29
Moundridge, Kansas



- Pins found this survey
- Pins set this Survey

State of Kansas)
County of McPherson) S.S.

I, Francis R. Rankin professional engineer of the State of Kansas, Do hereby certify the above survey was made under my supervision, and the above plat is true and correct so far as it is known to me, That all dimensions are correct as shown on the plat.

Signed this 11 Day of March 1963

Francis R. Rankin
Engineer & Surveyor
McPherson, Kansas



MICROFILM