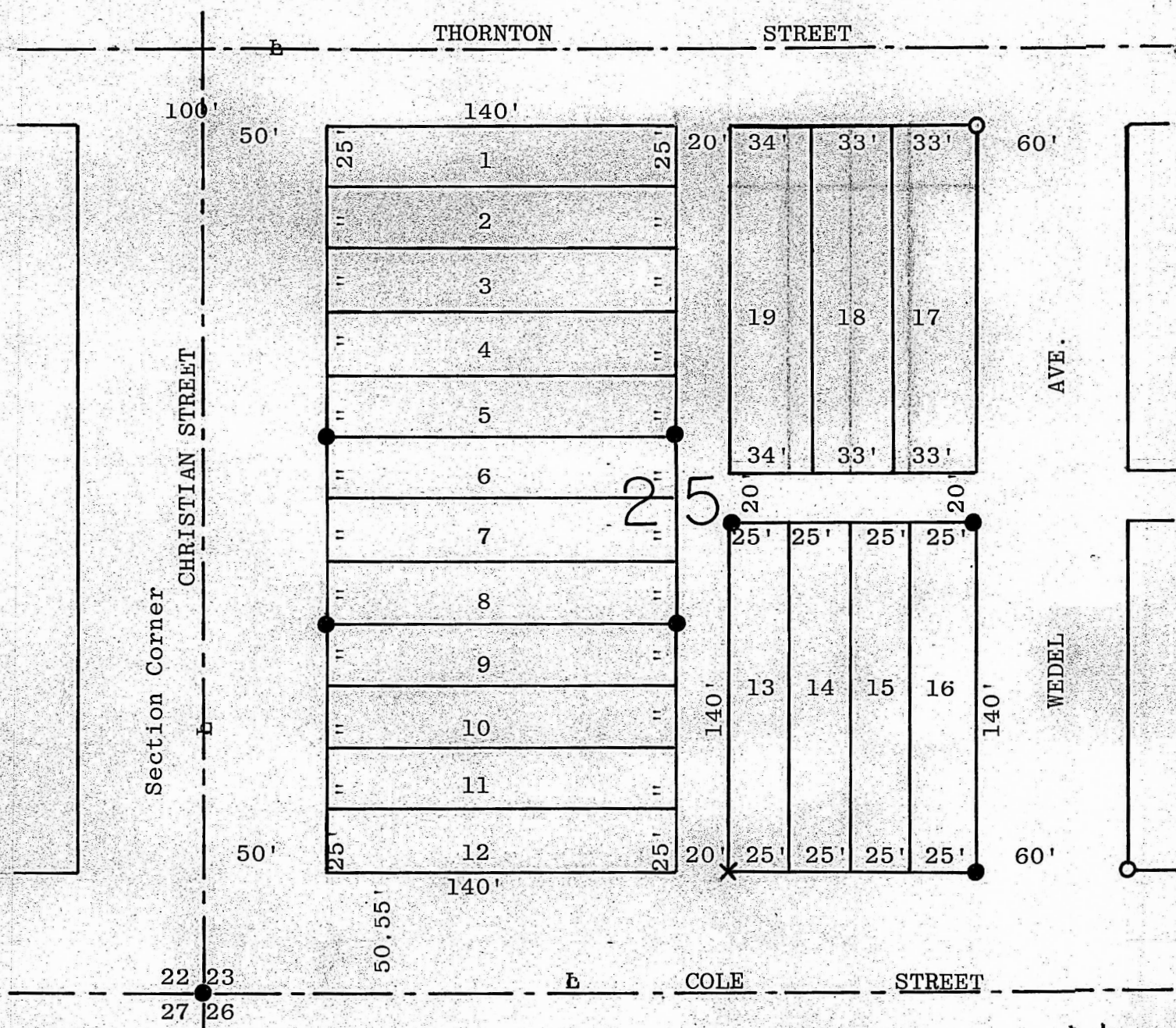


A SURVEY  
IN ORIGINAL TOWN  
MOUNDRIDGE, KANSAS



- Pins Found this Survey
- Pins Set this Survey
- × "X" in Concrete this Survey

STATE OF KANSAS )  
COUNTY OF MC PHERSON ) SS

I, Melvin Ferguson, County Engineer, McPherson County, Kansas do hereby certify that a survey was made of Lots 6,7,8 and Lots 13, 14,15,16 of Block 25, Original Town site to the city of Moundridge, Kansas and that the above plat is a true exhibit of said survey as far as it is known to me.

Survey called for by Goering Hardware Co.

Signed this 21<sup>st</sup> day of March, 1975

*Melvin Ferguson*  
Melvin Ferguson, P.  
County Engineer  
McPherson County, Kansas

