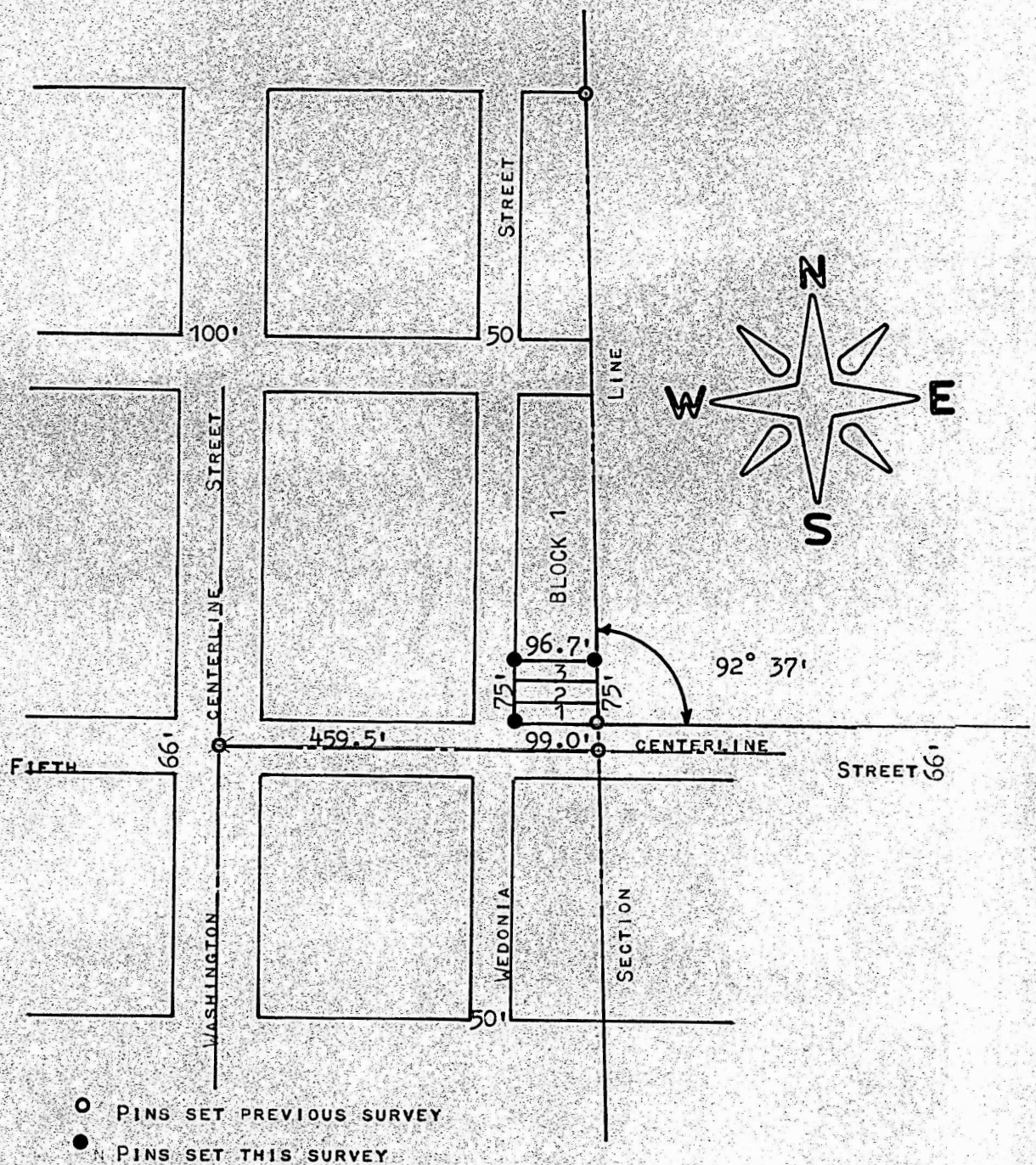


A SURVEY OF LOTS 1, 2, & 3 BLOCK 1
ORIGINAL TOWN
MARQUETTE, KANSAS



STATE OF KANSAS)
COUNTY OF MCPHERSON) SS

I, F. R. RANKIN, COUNTY ENGINEER OF McPHERSON COUNTY, KANSAS, DO HEREBY CERTIFY THAT UNDER MY SUPERVISION A SURVEY WAS MADE OF LOTS 1,2, AND 3, BLOCK 1, ORIGINAL TOWN TO THE CITY OF MARQUETTE, KANSAS, AND THE ABOVE PLAT IS A TRUE EXHIBIT OF SAID SURVEY AS FAR AS IT IS KNOWN TO ME.

SURVEY CALLED FOR BY JIM SCHERER FOR PETE KUMLE.

SIGNED THIS 28 DAY OF JULY, 1972.

FRANCIS R. RANKIN
COUNTY ENGINEER
MCPHERSON COUNTY,

