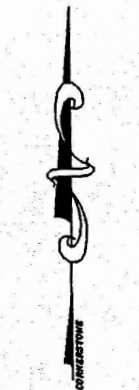


CORNERSTONE SURVEYING

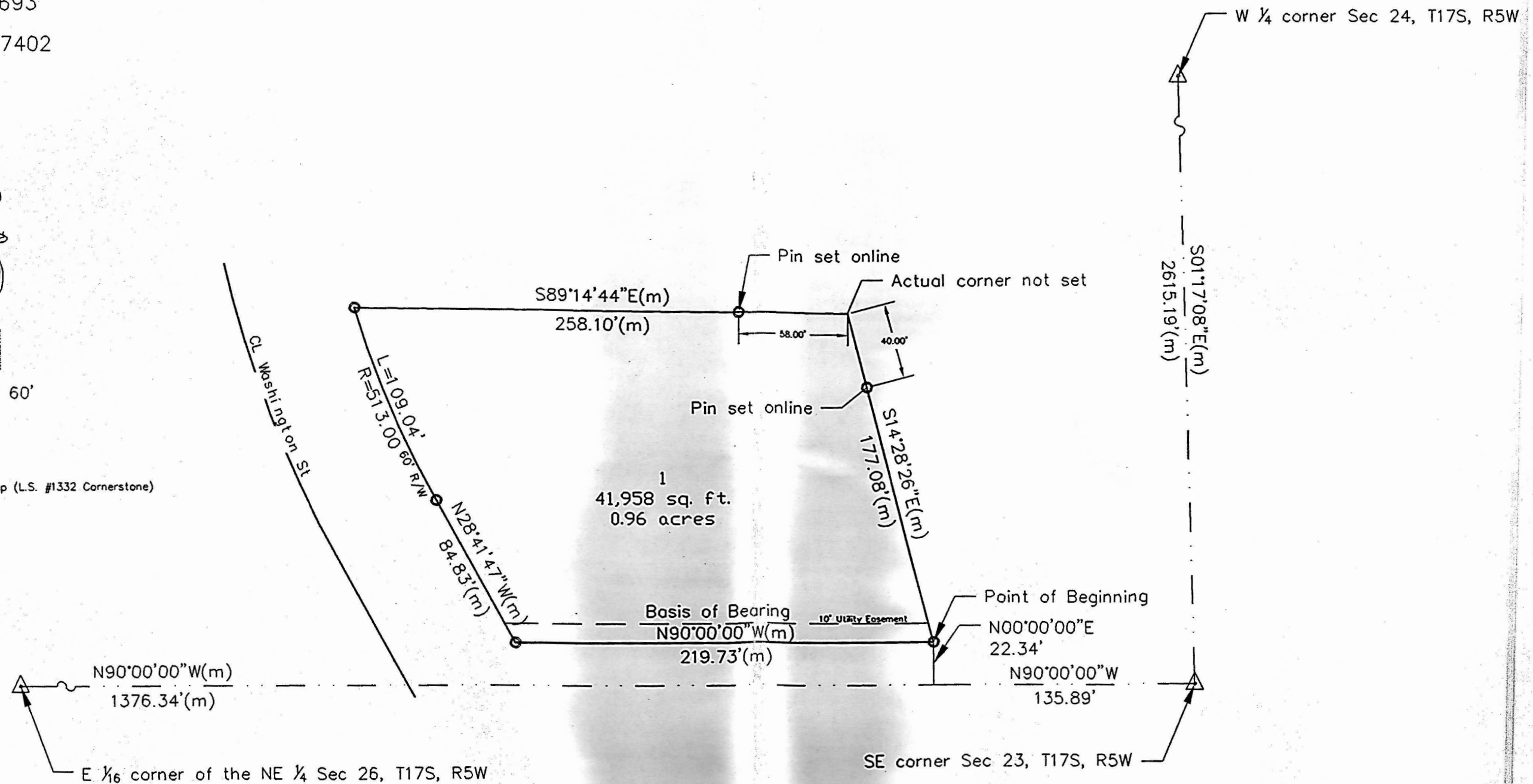
Richard Langley
785-823-6011
FAX 785-820-9693
P.O. Box 2745
Salina, Kansas 67402



1" = 60'

LEGEND:

- Set 1/2" rebar & cap (L.S. #1332 Cornerstone)
- (p) Plotted
- (m) Measured
- (c) Calculated



Section Corner Ties:

W 1/4 corner Sec24, T17S, R5W
FOUND 3/8" rebar - T fence post on South side 3" above bar
25.25' E.S.E. to step spike in footing N.W. corner building
77.50' W.S.W. to step spike in power pole
100.70' N.N.W. to step spike in meter pole

Southeast corner Sec23, T17S, R5W
FOUND 2" cap on rebar Steel fence post on South side of bar
12.0' N.E. to spike in 12" Elm Tree
8.40' N.N.W. to spike in 6" Ash tree
31.50' W.N.W. to spike in 4" Elm Tree

E 1/16 corner of the NE 1/4 Sec 26, T17S, R5W
FOUND 5/8" rebar w/Plastic cap
9.65' South to spike in 300" mulberry tree
15.20' Southeast to spike in 20" hackberry tree
10.00' South to East-West tree line
In line w/ tree line going North