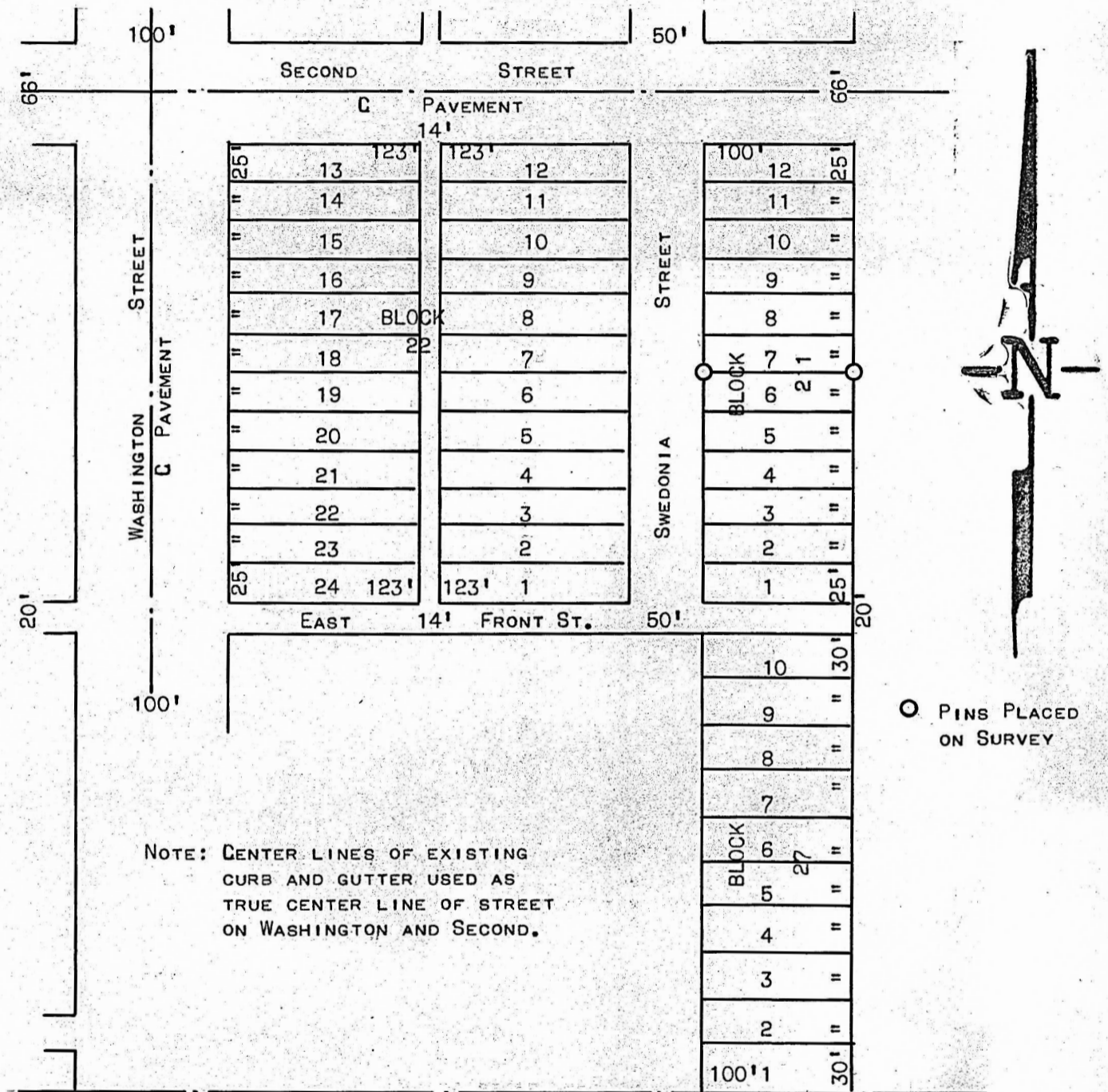


A SURVEY OF THE NORTH LINE LOT 6 BLOCK 21
MARQUETTE, KANSAS

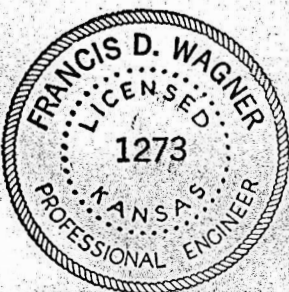


STATE OF KANSAS)
COUNTY OF McPHERSON) SS

I, FRANCIS D. WAGNER, COUNTY ENGINEER OF MCPHERSON COUNTY, KANSAS DO HEREBY CERTIFY THAT I DID CAUSE TO BE DONE ON THE 19TH DAY OF MARCH, 1957 A SURVEY OF THE NORTH LINE OF LOT 6 BLOCK 21 MARQUETTE, KANSAS, AND THAT THE ACCOMPANYING PLAT IS A TRUE EXHIBIT OF SAID SURVEY.

Francis D. Wagner
FRANCIS D. WAGNER
COUNTY ENGINEER

MARCH 20, 1957



MICROFILM