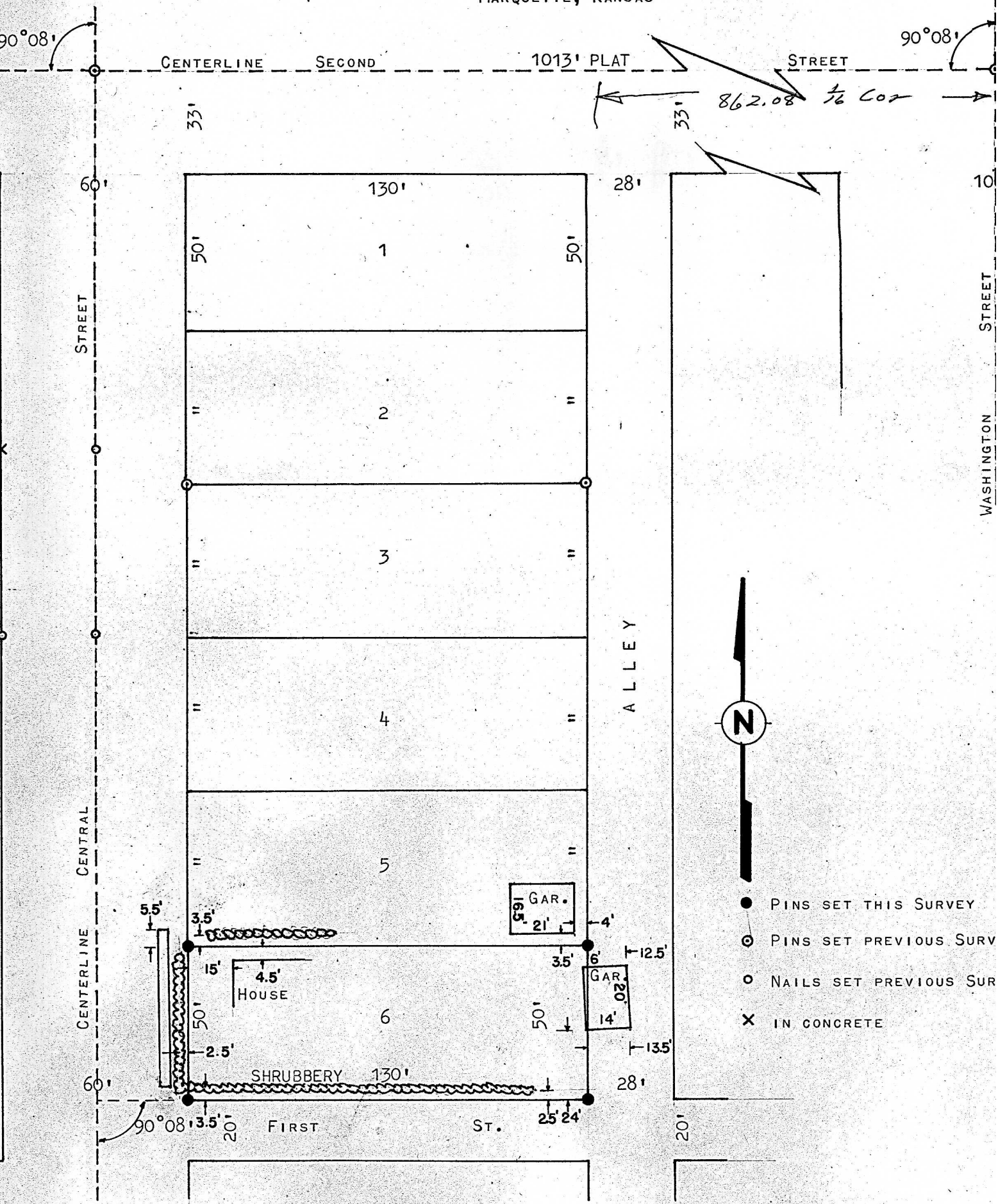


A SURVEY OF LOT 6, BLOCK 1

FOSTER'S ADDITION

MARQUETTE, KANSAS



STATE OF KANSAS)
COUNTY OF MCPHERSON)SS

I, FRANCIS RANKIN, COUNTY ENGINEER OF MCPHERSON, KANSAS, DO HEREBY CERTIFY THAT UNDER MY SUPERVISION A SURVEY WAS MADE OF LOT 6, BLOCK 1, FOSTERS ADDITION TO THE CITY OF MARQUETTE, KANSAS, AND THE ABOVE PLAT IS A TRUE EXHIBIT OF SAID SURVEY AS FAR AS IT IS KNOWN TO ME.

SURVEY CALLED FOR BY ARCHIE MACDONALD ATTY.

SIGNED THIS 28 DAY OF SEPTEMBER 1967.

FRANCIS R. RANKIN
COUNTY ENGINEER
MCPHERSON, KANSAS



MICROFILM