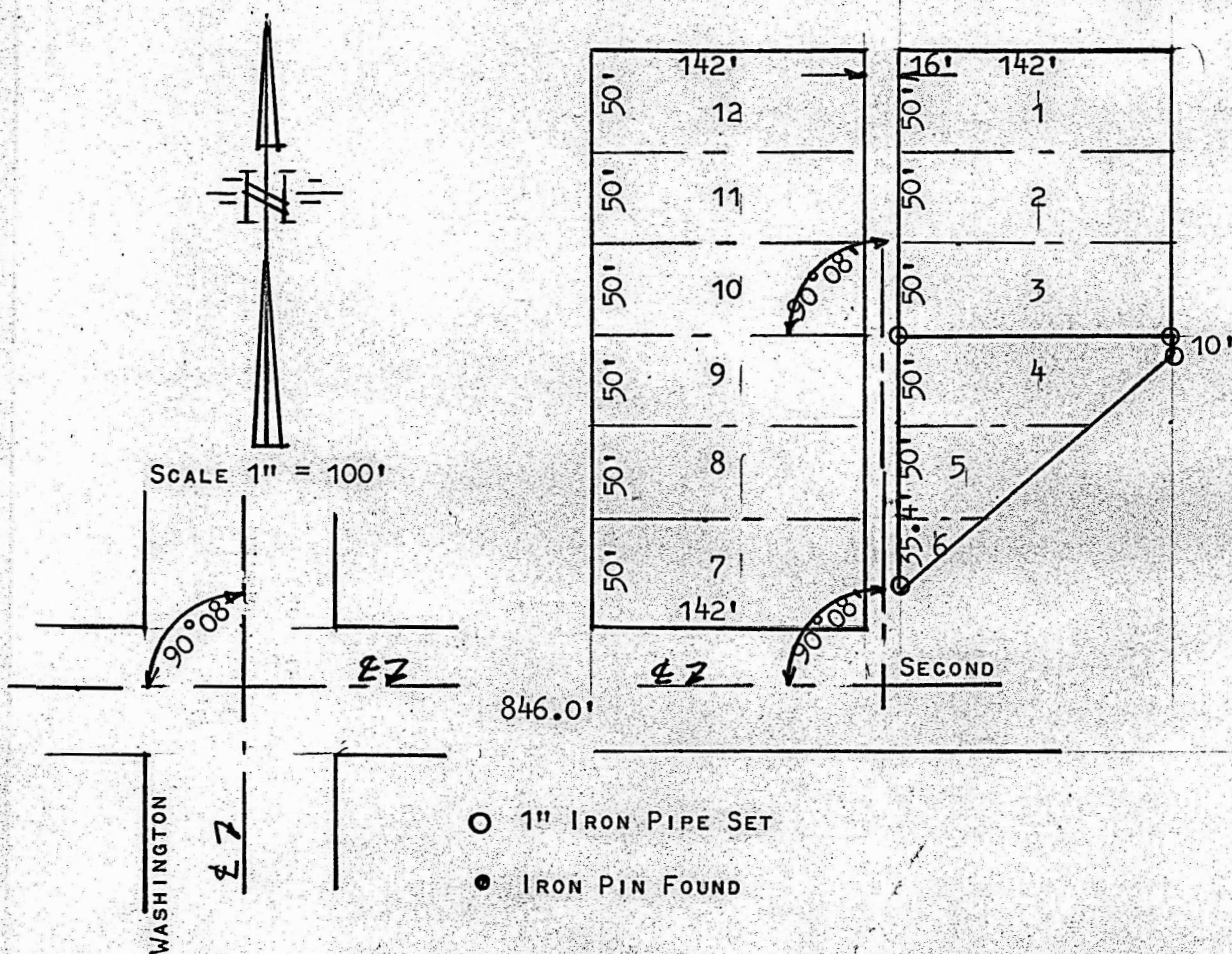


LOTS 4, 5, 6 BLOCK 4  
FAIRVIEW ADDITION  
MARQUETTE, KANSAS



STATE OF KANSAS )  
COUNTY OF McPHERSON ) SS

I, FRANCIS R. RANKIN PROFESSIONAL ENGINEER OF THE STATE OF KANSAS  
HEREBY CERTIFY THE ABOVE SURVEY WAS MADE UNDER MY SUPERVISION,  
AND THAT THE ABOVE PLAT IS TRUE AND CORRECT SO FAR AS IT IS KNOWN  
TO ME, THAT ALL ANGLES AND DIMENSIONS ARE CORRECT AS SHOWN ON THE  
PLAT.

SIGNED THIS 10 DAY OF MAY 1962 AT McPHERSON, KANSAS.

Francis R. Rankin  
FRANCIS R. RANKIN P.E. #799

